

Product datasheet for **RG232807**

Vitamin D Binding protein (GC) (NM_001204306) Human Tagged ORF Clone

Product data:

Product Type:	Expression Plasmids
Product Name:	Vitamin D Binding protein (GC) (NM_001204306) Human Tagged ORF Clone
Tag:	TurboGFP
Symbol:	GC
Synonyms:	DBP; DBP-maf; DBP/GC; Gc-MAF; GcMAF; GRD3; HEL-S-51; VDB; VDBG; VDBP
Mammalian Cell Selection:	Neomycin
Vector:	pCMV6-AC-GFP (PS100010)
E. coli Selection:	Ampicillin (100 ug/mL)



[View online »](#)

ORF Nucleotide Sequence:

>RG232807 representing NM_001204306
 Red=Cloning site Blue=ORF Green=Tags(s)

TTTTGTAATACGACTCACTATAGGGCGGCCGGAATTCGTCGACTGGATCCGGTACCGAGGAGATCTGCC
 GCCGCGATCGCC

ATGAAGAGGGTCTGCTACTACTGCTTGTGTGGCATTGGACATGCTTTAGAGAGAGGCCGGGATTATG
 AAAAGAATAAAGTCTGCAAGGAATTCTCCCATCTGGGAAAGGAGGACTTCACATCTCTGCTACTAGTCCT
 GTACAGTAGAAAAATTTCCAGTGGCAGCTTTGAACAGGTCAGCCAACTTGTGAAGGAAGTTGTCTCCTTG
 ACCGAAGCCTGTGTGCGGAAGGGGCTGACCTGACTGCTATGACACCAGGACCTCAGCACTGTCTGCCA
 AGTCTGTGAAAGTAATTCTCCATTCGCCGTTACCCAGGCACTGCTGAGTGCTGCACCAAGAGGGCCT
 GGAACGAAAGCTCTGCATGGCTGCTGAAACACCAGCCACAGGAATTCCTACCTACGTGGAACCCACA
 AATGATGAAATCTGTGAGGCGTTCAGGAAAGATCAAAGGAATATGCTAATCAATTTATGTGGGAATATT
 CCACTAATTACGACAAGCTCCTCTGCTACTTTTAGTCAGTTACACCAAGAGTTATCTTTCTATGGTAGG
 GTCCTGCTGTACCTCTGCAAGCCCACTGTATGCTTTTTGAAAGAGAGACTCCAGCTTAAACATTTATCA
 TTCTCACCACCTCTGCAATAGAGTCTGCTCACAAATATGCTGCTTATGGGGAGAAGAAATCAAGGCTCA
 GCAATCTCATAAAGTTAGCCCAAAAAGTGCCTACTGCTGATCTGGAGGATGTTTTGCCACTAGCTGAAGA
 TATTACTAACATCCTCTCCAAATGCTGTGAGTCTGCCTCTGAAGATTGCATGGCCAAAGAGCTGCCTGAA
 CACACAGTAAACTCTGTGACAATTTATCCACAAGAATTCTAAGTTTGAAGACTGTTGTCAAGAAAAAA
 CAGCCATGGACGTTTTTGTGTGCACTTACTTTCATGCCAGCTGCCCACTCCCGAGCTTCCAGATGTAGA
 GTTGCCCAACAAGATGTGTGTGATCCAGGAAACACCAAAGTCATGGATAAGTATACATTTGAACTA
 AGCAGAAGGACTCATCTCCGGAAGTATTCCTCAGTAAGTACTTGAGCCAACCCATAAAGCCTTGGTG
 AATGCTGTGATGTTGAAGACTCAACTACTGTTTTAATGCTAAGGCGCCTCTACTAAAGAAGCAACTATC
 TTCTTTTATTGACAAGGACAAGAATACTGTGCAGATTATTCAGAAAATACATTTACTGAGTACAAGAAA
 AAAGTGGCAGAGCGACTAAAAGCAAAATTCCTGATGCCACCCACGGAAGTGGCAAGCTGGTTAAACA
 AGCACTCAGACTTTCCTCAACTGCTGTTCCATAAACTCACCTCCTTTACTGTATTGAGAGATTGA
 TGCTGAATTGAAGAATATCCTG

ACGCGTACGCGGCCGCTCGAG – GFP Tag – GTTTAA

Protein Sequence:

>RG232807 representing NM_001204306
 Red=Cloning site Green=Tags(s)

MKRVLVLLLAFAFGHALERGRDYEKNKVKCKEFSHLGKEDFTSLSLVLYSRKFPSGTFEQVSQLVKEVVSL
 TEACCAEGADPDCYDTRTSALSAKSCESNSPFPVHPGTAECCTKEGLERKLCMAALKHQPFPTTYVEPT
 NDEICEAFRKPDPKEYANQFMWEYSTNYGQAPLSLLVSYTKSYLSMVGSCCTSASPTVCFKLERLQKHL
 LLTTLNLRVCSQYAAAYGEKKSRLSNLIKLAQKVPTADLEDVPLAEDITNILSKCCESASEDCMAKELPE
 HTVKLCDNLSTKNSKFEDCCQEKAMDVVFCTYFMPAAQLPELDPVELPTNKDVCDPGNTKVMCKYTFEL
 SRRTHLPEVFLSKVLEPTLKSLECCDVEDSTTCFNAKGPLLKELSSFIDKGQELCADYSENTFFTEYKK
 KLAERLAKLPDAPTELAKLVNKHSDFASNCCSINSPPLYCDSEIDAELKNIL

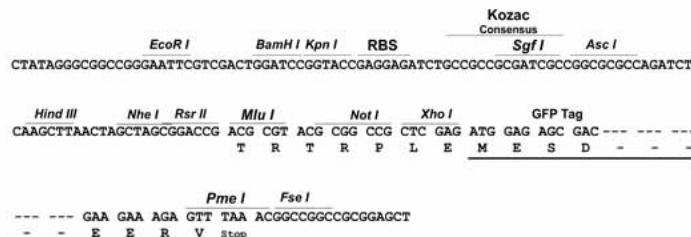
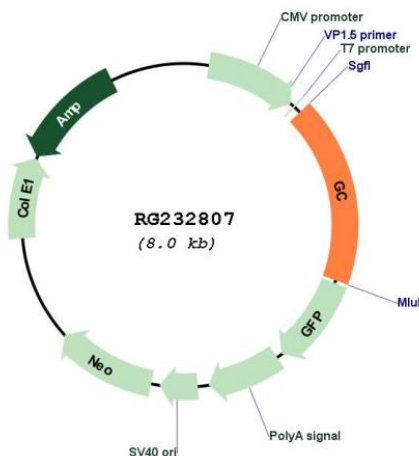
TRTRPLE – GFP Tag – V

Restriction Sites:

Sgfl-MluI

Cloning Scheme:

Cloning sites used for ORF Shutting:


Plasmid Map:


ACCN: NM_001204306

ORF Size: 1422 bp

OTI Disclaimer: The molecular sequence of this clone aligns with the gene accession number as a point of reference only. However, individual transcript sequences of the same gene can differ through naturally occurring variations (e.g. polymorphisms), each with its own valid existence. This clone is substantially in agreement with the reference, but a complete review of all prevailing variants is recommended prior to use. [More info](#)

OTI Annotation: This clone was engineered to express the complete ORF with an expression tag. Expression varies depending on the nature of the gene.

Components: The ORF clone is ion-exchange column purified and shipped in a 2D barcoded Matrix tube containing 10ug of transfection-ready, dried plasmid DNA (reconstitute with 100 ul of water).

Reconstitution Method:	<ol style="list-style-type: none">1. Centrifuge at 5,000xg for 5min.2. Carefully open the tube and add 100ul of sterile water to dissolve the DNA.3. Close the tube and incubate for 10 minutes at room temperature.4. Briefly vortex the tube and then do a quick spin (less than 5000xg) to concentrate the liquid at the bottom.5. Store the suspended plasmid at -20°C. The DNA is stable for at least one year from date of shipping when stored at -20°C.
RefSeq:	<u>NM_001204306.1, NP_001191235.1</u>
RefSeq Size:	1895 bp
RefSeq ORF:	1425 bp
Locus ID:	2638
UniProt ID:	<u>P02774</u>
Cytogenetics:	4q13.3
Protein Families:	Secreted Protein
Gene Summary:	The protein encoded by this gene belongs to the albumin gene family. It is a multifunctional protein found in plasma, ascitic fluid, cerebrospinal fluid and on the surface of many cell types. It binds to vitamin D and its plasma metabolites and transports them to target tissues. Alternatively spliced transcript variants encoding different isoforms have been found for this gene.[provided by RefSeq, Feb 2011]