

Product datasheet for **RG232791**

CRLR (CALCRL) (NM_001271751) Human Tagged ORF Clone

Product data:

| | |
|---------------------------|---|
| Product Type: | Expression Plasmids |
| Product Name: | CRLR (CALCRL) (NM_001271751) Human Tagged ORF Clone |
| Tag: | TurboGFP |
| Symbol: | CALCRL |
| Synonyms: | CGRPR; CRLR; LMPHM8 |
| Mammalian Cell Selection: | Neomycin |
| Vector: | pCMV6-AC-GFP (PS100010) |
| E. coli Selection: | Ampicillin (100 ug/mL) |



[View online »](#)

ORF Nucleotide Sequence:

>RG232791 representing NM_001271751
 Red=Cloning site Blue=ORF Green=Tags(s)

TTTTGTAATACGACTCACTATAGGGCGGCCGGAATTCGTCGACTGGATCCGGTACCGAGGAGATCTGCC
 GCC**CGGATCGCC**

ATGGAGAAAAAGTGTACCCTGTATTTCTGGTTCTCTTGCCTTTTTTATGATTCTTGTTACAGCAGAAT
 TAGAAGAGAGTCCCTGAGGACTCAATTCAGTTGGGAGTTACTAGAAAATAAATCATGACAGCTCAATATGA
 ATGTTACCAAAAGATTATGCAAGACCCATTCAACAAGCAGAAGGCGTTTACTGCAACAGAACCTGGGAT
 GGATGGCTCTGCTGGAACGATGTTGCAGCAGGAAGTGAATCAATGCAGCTCTGCCCTGATTACTTTCAGG
 ACTTTGATCCATCAGAAAAAGTTACAAAGATCTGTGACCAAGATGGAAACTGGTTTAGACATCCAGCAAG
 CAACAGAACATGGACAAATTATACCCAGTGAATGTTAACACCCACGAGAAAAGTGAAGACTGCACATAAT
 TTGTTTTACCTGACCATAATTGGACACGGATTGTCTATTGCATCACTGCTTATCTCGCTTGGCATATTCT
 TTTATTTCAAGAGCCTAAGTTGCCAAAGGATTACCTTACACAAAAATCTGTTCTTCTCATTGTTGTAA
 CTCTGTTGTAACAATCATTACCTCACTGCAGTGGCCAACAACCCAGGCCCTTAGTAGCCACAAATCCTGTT
 AGTTGCAAAGTGTCCAGTTCATTATCTTTACCTGATGGGCTGTAATTACTTTTGGATGCTCTGTGAAG
 GCATTTACCTACACACTCATTGTTGGTGGCCGTGTTTGCAGAGAAGCAACATTTAATGTGGTATTATTT
 TCTTGGCTGGGGATTTCCACTGATTCTGCTTGTATACATGCCATTGCTAGAAGCTTATATTACAATGAC
 AATTGCTGGATCAGTTCTGATACCCATCTCCTCTACATTATCCATGGCCCAATTTGTGCTGCTTTACTGG
 TGAATCTTTTTTCTTGTAAATATTGTACGCGTTCTCATCACCAGTAAAAGTTACACACCAAGCGGA
 ATCCAATCTGTACATGAAAGCTGTGAGAGCTACTCTTATCTTGGTGCCATTGCTTGGCATTGAATTTGTG
 CTGATCCATGGCAGCTGAAGGAAAGATTGCAGAGGAGGTATATGACTACATCATGCACATCCTTATGC
 ACTTCCAGGGTCTTTGGTCTCTACCATTTTCTGCTTCTTAAATGGAGAGGTTCAAGCAATCTGAGAAG
 AAAGTGAATCAATACAAAATCCAATTTGGAAACAGCTTTTCCAACCTCAGAAGCTTTCGTAGTGGGCT
 TACACAGTGTCAACAATCAGTGATGGTCCAGGTTATAGTCATGACTGTCCTAGTGAACACTTAAATGGAA
 AAAGCATCCATGATATTGAAAATGTTCTCTTAAAACAGAAAATTTATATAAT

AG**CGGACCG**ACGCGTACGCGGCCGCTCGAG - GFP Tag - GTTTAA

Protein Sequence:

>RG232791 representing NM_001271751
 Red=Cloning site Green=Tags(s)

MEKKCTLYFLVLLPFFMILVTAEELEESPEDSIQLGVTRNKIMTAQYECYQKIMQDPIQQAEGVYCNRTWD
 GWLWVNDVAAGTESMQLCPDYFQDFDPSEKVTKICDQDGNWFRHPASNRTWTNYTQCNVNTHEKVKALN
 LFYLTIIHGHLIASLLISLGIFFYFKLSQCRITLHKNLFFSVCNSVVTIIHLTAVANNQALVATNPV
 SCKVVSQFIHLYLMGCNYFWMLCEGIYHLTLIVVAVFAEQHLMWYFYLWGFPLIPACIHAIRSLYYND
 NCWISSDTHLLYIIHGPICAALLVNLFFLLNIVRVLITKLVTHQAESNLYMKAVRATLILVPLLGIEFV
 LIPWRPEGKIAEEVYDYIMHILMHFQGLLVSTIFCFNGEVQAILRRNWNQYKIQFGNSFSNSEALRSAS
 YTVSTISDGPYSHDCPSEHLNGKSIHDIENVLLKPENLYN

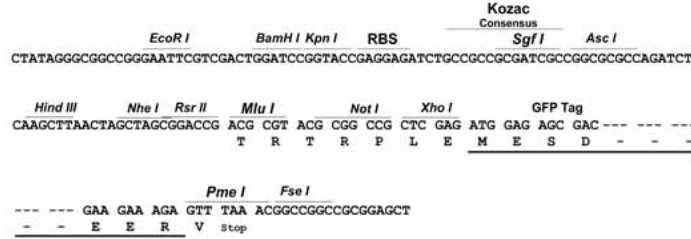
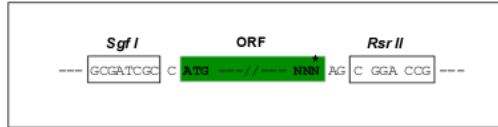
SGPTRRRLE - GFP Tag - V

Restriction Sites:

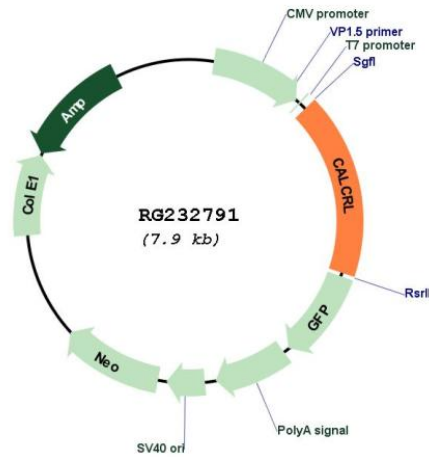
Sgfl-RsrII

Cloning Scheme:

Cloning sites used for ORF Shuttling:



Plasmid Map:



ACCN: NM_001271751

ORF Size: 1383 bp

| | |
|-------------------------------|--|
| OTI Disclaimer: | <p>Due to the inherent nature of this plasmid, standard methods to replicate additional amounts of DNA in E. coli are highly likely to result in mutations and/or rearrangements. Therefore, OriGene does not guarantee the capability to replicate this plasmid DNA. Additional amounts of DNA can be purchased from OriGene with batch-specific, full-sequence verification at a reduced cost. Please contact our customer care team at custsupport@origene.com or by calling 301.340.3188 option 3 for pricing and delivery.</p> <p>The molecular sequence of this clone aligns with the gene accession number as a point of reference only. However, individual transcript sequences of the same gene can differ through naturally occurring variations (e.g. polymorphisms), each with its own valid existence. This clone is substantially in agreement with the reference, but a complete review of all prevailing variants is recommended prior to use. More info</p> |
| OTI Annotation: | <p>This clone was engineered to express the complete ORF with an expression tag. Expression varies depending on the nature of the gene.</p> |
| Components: | <p>The ORF clone is ion-exchange column purified and shipped in a 2D barcoded Matrix tube containing 10ug of transfection-ready, dried plasmid DNA (reconstitute with 100 ul of water).</p> |
| Reconstitution Method: | <ol style="list-style-type: none">1. Centrifuge at 5,000xg for 5min.2. Carefully open the tube and add 100ul of sterile water to dissolve the DNA.3. Close the tube and incubate for 10 minutes at room temperature.4. Briefly vortex the tube and then do a quick spin (less than 5000xg) to concentrate the liquid at the bottom.5. Store the suspended plasmid at -20°C. The DNA is stable for at least one year from date of shipping when stored at -20°C. |
| RefSeq: | <p>NM_001271751.2</p> |
| RefSeq Size: | <p>5990 bp</p> |
| RefSeq ORF: | <p>1386 bp</p> |
| Locus ID: | <p>10203</p> |
| UniProt ID: | <p>Q16602</p> |
| Cytogenetics: | <p>2q32.1</p> |
| Protein Families: | <p>Druggable Genome, GPCR, Transmembrane</p> |
| Protein Pathways: | <p>Neuroactive ligand-receptor interaction, Vascular smooth muscle contraction</p> |
| Gene Summary: | <p>Receptor for calcitonin-gene-related peptide (CGRP) together with RAMP1 and receptor for adrenomedullin together with RAMP3 (By similarity). Receptor for adrenomedullin together with RAMP2. The activity of this receptor is mediated by G proteins which activate adenylyl cyclase.[UniProtKB/Swiss-Prot Function]</p> |