

Product datasheet for **RG232773**

GABPA (NM_001197297) Human Tagged ORF Clone

Product data:

Product Type:	Expression Plasmids
Product Name:	GABPA (NM_001197297) Human Tagged ORF Clone
Tag:	TurboGFP
Symbol:	GABPA
Synonyms:	E4TF1-60; E4TF1A; NFT2; NRF2; NRF2A; RCH04A07
Mammalian Cell Selection:	Neomycin
Vector:	pCMV6-AC-GFP (PS100010)
E. coli Selection:	Ampicillin (100 ug/mL)



[View online »](#)

ORF Nucleotide Sequence:

>RG232773 representing NM_001197297
 Red=Cloning site Blue=ORF Green=Tags(s)

TTTTGTAATACGACTCACTATAGGGCGGCCGGAATTCGTCGACTGGATCCGGTACCGAGGAGATCTGCC
 GCC**CGCATCGCC**

ATGACTAAAAGAGAAGCAGAGGAGCTGATAGAATTGAGATTGATGGAACAGAGAAAAGCAGAGTGCACAG
 AAGAAAGCATTGTAGAACAACCTACGCCAGCTGAATGTGTAAGCCAGGCCATAGACATCAATGAACC
 AATAGGCAATTTAAAGAACTGCTAGAACCAAGACTACAGTGTTCTTTGGATGCTCATGAAATTTGTCTG
 CAAGATATCCAGCTGGATCCAGAACGAAGTTTATTTGACCAAGGAGTAAAAACAGATGGAAGTGTACAGC
 TTAGTGTACAGGTAATTTCTTACCAAGGAATTGAACCAAAGTTAAACATCCTTGAAATTTGTTAAACCTGC
 GGACACTGTTGAGGTTGTTATTGATCCAGATGCCACCATGCTGAATCAGAAGCACATCTGTTGAAGAA
 GCTCAAGTGATAACTCTGATGGCACAAAACACATCACAACCATTCAGATGAAACTTCAGAACAAGTGA
 CAAGATGGGCTGCTGACTGGAAGGCTATAGGAAAGAACAAGAAGCCTTGGGATACCCTATGATCCCAT
 ACAGTGGTCCACAGACCAAGTCTGCATTGGGTGGTTTGGGTAATGAAGGAATTCAGCATGACCGATATA
 GACCTCACCACACTCAACATTTTCGGGGAGAGAATTATGTAGTCTCAACCAAGAAGATTTTTTTCAGCGGG
 TTCTCGGGGAGAAATCTCTGGAGTCACTGGAAGTCTCCGAAAATATGTATTGGCAAGTCAAGAACA
 ACAGATGAATGAAATAGTTACAATTGATCAACCTGTGCAAATTATTCCAGCATCAGTGAATCTGCTACA
 CCTACTACCATTAAGTTATAAATAGTAGTGCGAAAGCAGCCAAAGTACAAGAGCGCCGAGGATTTTCAG
 GAGAAGATAGAAGCTCACCTGGGAACAGAACAGGAAACAAATGGCCAAATCCAACATGGCAGTTTTTGTCT
 AGAACTTCTTACTGATAAGGACGCTCGAGACTGCATTTCTTGGGTTGGTGAAGGTGAATTTAAGCTA
 AATCAGCCTGAAGTGGTGCACAGAAATGGGGACAGCGTAAAAATAAGCCTACGATGAAGTATGAGAAAC
 TCAGTCGTGCATTAAGATATTATTACGATGGGGACATGATTTGTTAAAGTTCAAGGCAAGAGATTTGTGTA
 CAAGTTTGTCTGTGACTTGAAGACTCTTATTGGATACAGTGCAGCGGAGTTGAACCGTTTGGTACAGAA
 TGTGAACAGAAGAACTTCAAAGATGCAGCTCCATGGAATTGCCAGCCAGTCACAGCAGTAGCTCTGG
 CTAAGTCTTCTGCAAACGGAAAAGGATAAT

ACGCGTACGCGGCCGCTCGAG - GFP Tag - GTTTAA

Protein Sequence:

>RG232773 representing NM_001197297
 Red=Cloning site Green=Tags(s)

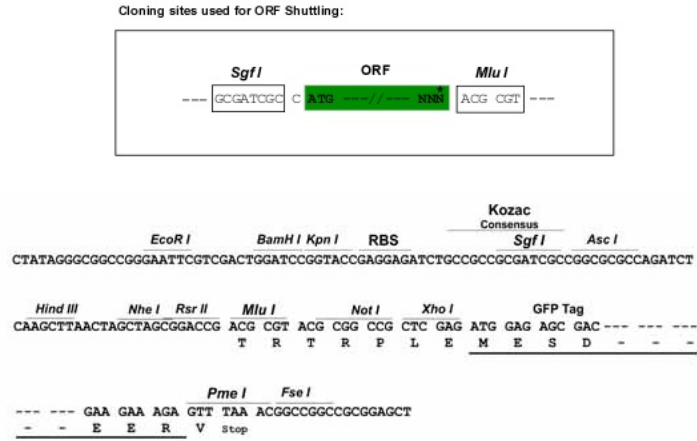
MTKREAELIEIEIDGTEKAECTEESIVEQTYAPAECVSQAIDINEPIGNLKKLLEPRLQCSLDAHEICL
 QDIQLDPERSLFDQGVKTDGTVQLSVQVISYQGIEPKLNILEIVKPADTVEVVIDPDAHAESEHLVEE
 AQVITLDGTHKHIITISDETSEQVTRWAAALEGYRKEQERLGIPYDPIQWSTDQVLHVVVWVWMEFSMTDI
 DLTTLNISGRELCSLNQEDFFQVRVPRGELWHSLELLRKYVVLASQEQMNEIVTIDQPVQIIPASVQSAT
 PTTIKVINSSAKAAKVQRAPRISGEDRSSPGNRTGNNGQIQLWQFLLELLTDKDARDCISWVGDGEGFKL
 NQPELVAQKWGQRKNKPTMNYEKLSRALRYYYDGMICKVQGKRFVYKFCVCDLKTILIGYSAAELNRLVTE
 CEQKLLAKMQLHGIAQPVTAVALATASLQTEKDN

TRTRPLE - GFP Tag - V

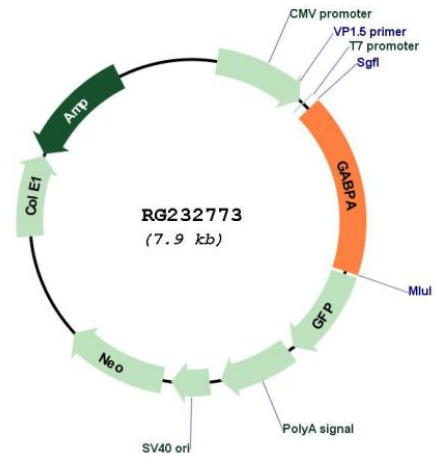
Restriction Sites:

Sgfl-MluI

Cloning Scheme:



Plasmid Map:



ACCN: NM_001197297

ORF Size: 1362 bp

OTI Disclaimer:	<p>Due to the inherent nature of this plasmid, standard methods to replicate additional amounts of DNA in E. coli are highly likely to result in mutations and/or rearrangements. Therefore, OriGene does not guarantee the capability to replicate this plasmid DNA. Additional amounts of DNA can be purchased from OriGene with batch-specific, full-sequence verification at a reduced cost. Please contact our customer care team at custsupport@origene.com or by calling 301.340.3188 option 3 for pricing and delivery.</p> <p>The molecular sequence of this clone aligns with the gene accession number as a point of reference only. However, individual transcript sequences of the same gene can differ through naturally occurring variations (e.g. polymorphisms), each with its own valid existence. This clone is substantially in agreement with the reference, but a complete review of all prevailing variants is recommended prior to use. More info</p>
OTI Annotation:	<p>This clone was engineered to express the complete ORF with an expression tag. Expression varies depending on the nature of the gene.</p>
Components:	<p>The ORF clone is ion-exchange column purified and shipped in a 2D barcoded Matrix tube containing 10ug of transfection-ready, dried plasmid DNA (reconstitute with 100 ul of water).</p>
Reconstitution Method:	<ol style="list-style-type: none">1. Centrifuge at 5,000xg for 5min.2. Carefully open the tube and add 100ul of sterile water to dissolve the DNA.3. Close the tube and incubate for 10 minutes at room temperature.4. Briefly vortex the tube and then do a quick spin (less than 5000xg) to concentrate the liquid at the bottom.5. Store the suspended plasmid at -20°C. The DNA is stable for at least one year from date of shipping when stored at -20°C.
RefSeq:	NM_001197297.2
RefSeq Size:	4745 bp
RefSeq ORF:	1365 bp
Locus ID:	2551
UniProt ID:	Q06546
Cytogenetics:	21q21.3
Protein Families:	Transcription Factors
Gene Summary:	<p>This gene encodes one of three GA-binding protein transcription factor subunits which functions as a DNA-binding subunit. Since this subunit shares identity with a subunit encoding the nuclear respiratory factor 2 gene, it is likely involved in activation of cytochrome oxidase expression and nuclear control of mitochondrial function. This subunit also shares identity with a subunit constituting the transcription factor E4TF1, responsible for expression of the adenovirus E4 gene. Because of its chromosomal localization and ability to form heterodimers with other polypeptides, this gene may play a role in the Down Syndrome phenotype. Two transcript variants encoding the same protein have been found for this gene. [provided by RefSeq, Oct 2010]</p>