

Product datasheet for **RG232760**

PCPTP1 (PTPRR) (NM_001207016) Human Tagged ORF Clone

Product data:

Product Type:	Expression Plasmids
Product Name:	PCPTP1 (PTPRR) (NM_001207016) Human Tagged ORF Clone
Tag:	TurboGFP
Symbol:	PTPRR
Synonyms:	EC-PTP; PCPTP1; PTP-SL; PTPBR7; PTPRQ
Mammalian Cell Selection:	Neomycin
Vector:	pCMV6-AC-GFP (PS100010)
E. coli Selection:	Ampicillin (100 ug/mL)



[View online »](#)

ORF Nucleotide Sequence:

>RG232760 representing NM_001207016
 Red=Cloning site Blue=ORF Green=Tags(s)

TTTTGTAATACGACTCACTATAGGGCGGCCGGAATTCGTCGACTGGATCCGGTACCGAGGAGATCTGCC
 GCC**CGGATCGCC**

ATGAACAGAAAAATGTTTTACAAGGGCAGCATGAAGCGGACAAAATCTGGAGCAAAGAAGATTTTATG
 CTGTTGTCATTTTTCTCAGCATCTTTGTTATTATAGTAACGTGTTTGATGATTCTTTACAGATTAAGA
 AAGATTTAGCTTTCTTAAGACAAGACAAGAGAAAAACCAGGAGATCCACCTATCGCCATCACATTA
 CAGCCAGCACTGTCCGAGGCAAAGACAGTCCACAGCATGGTCCAACCTGAGCAGGCCCAAAGTACTGA
 ATGTTGTCGTGGACCCTCAAGGCCGAGGTGCTCCTGAGATCAAAGCTACCACCGCTACCTCTGTTTGCC
 TTCTCCTTTCAAATGAAGCCATAGGACTTCAAGAGAGAAGAGGGTCCAACGTATCTTTACATTGGAC
 ATGAGTAGCTGGGAACATTGAACCTTTGTGTCTATACCAACACCACGGGAGAAGGTAGCAATGGAGT
 ATCTGCAGTCAGCCAGCCGAATTCTCACAAGGTCTCAGCTGAGGGACGTCGTGGCAAGTTCACATTTACT
 CCAAAGTGAATTCATGGAATACCAATGAACCTTTGTGGATCCCAAAGAAATTGATATTCGCGTCATGGA
 ACTAAAAATCGCTATAAGACCATTTTACCAATCCCTCAGCAGAGTGTGTTAAGACCAAAAAATGTAA
 CCGATTCAATTGAGCACCTACATTAATGCTAATTATATTAGGGGCTACAGTGGCAAGGAGAAAGCCTTCAT
 TGCCACGCAAGGCCCATGATCAACACCGTGGATGATTTCTGGCAGATGGTTTGGCAGGAAGACAGCCCT
 GTGATTGTTATGATCACAAAACCTCAAAGAAAAAATGAGAAATGTGTGCTATACTGGCCGAAAAGAGAG
 GGATATATGGAAGTTGAGGTTCTGGTTATCAGTGTAATGAATGTGATAACTACACCATTCGAAACCT
 TGTCTTAAAGCAAGGAAGCCACACCAACATGTGAAGCATTACTGGTACACCTCATGGCCTGATCACAAG
 ACTCCAGACAGTCCAGCCCTCCTACAGTCTGCTGGATGTAGAAGAAGACAGACTTGCTTCCAGG
 GCCGAGGCCCTGTGGTTGCTCCACTGCAGTGCAGGAATAGGTAGAACAGGGTGTGTTTATTGCTACATCCAT
 TGGCTGTCAACAGCTGAAAGAAGAAGGAGTTGTGGATGCACTAAGCATTGTCTGCCAGCTTCGTATGGAT
 AGAGGTGGAATGGTGCAACCAAGTGAAGTGTGACCATGCTCTGTGCCTGTATGAGAGCA
 GACTTTCAGCAGAGACTGTCCAG

ACGCGTACGCGGCCGCTCGAG - GFP Tag - GTTTAA

Protein Sequence:

>RG232760 representing NM_001207016
 Red=Cloning site Green=Tags(s)

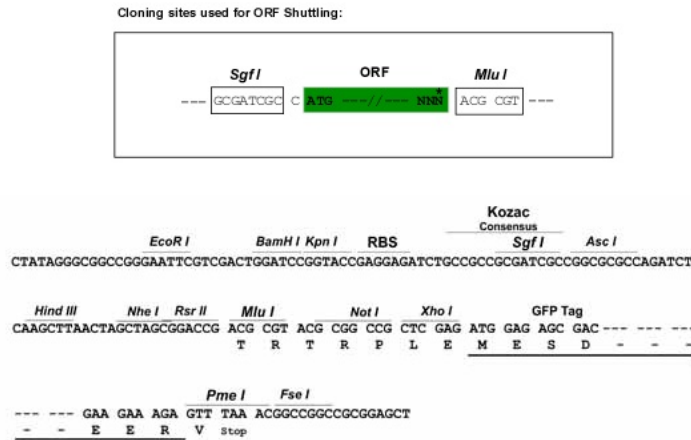
MNQKNVLQGQHEADKIWSKEGFYAVVIFLSIFVIIVTCLMILYRLKERFQLSLRQDKEKNQEIHLSPITL
 QPALSEAKTVHSMVQPEQAPKVLNVVDPQGRGAPEIKATTATSVCPSPFKMKPIGLQERRGSNVSLLD
 MSSLGNIEPFVSIPTPREKVAMEYLQSASRILTRSQLRDVVASSHLLQSEFMEIPMNFVDPKEIDIPRHG
 TKNRYKTILPNPLSRVCLRPKNVTDLSITYINANYIRGYSKKEKAFIATQGMINTVDDFWQMVWQEDSP
 VIVMITKLKEKNEKCVLYWPEKRGYIGKVEVLVSVNECDNYTIRNLVLKQGSHTQHVKHYYWTSWPDHK
 TPDSAQPLLQLMLDVEEDRLASQGRGPVVVHCSAGIGRTGCFIATSIGCQQLKEEGVVDALSIVCQLRMD
 RGGMVQTSEQYEFVHHALCLYESRLSAETVQ

TRTRPLE - GFP Tag - V

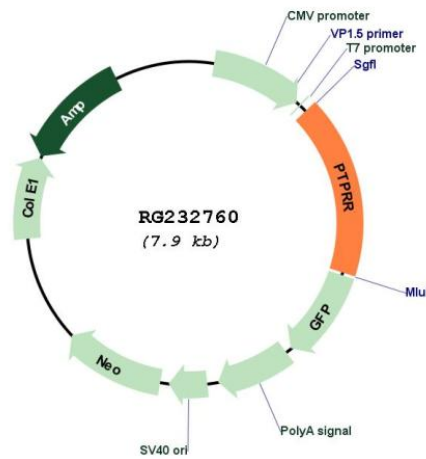
Restriction Sites:

SgfI-MluI

Cloning Scheme:



Plasmid Map:



ACCN: NM_001207016

ORF Size: 1353 bp

OTI Disclaimer: The molecular sequence of this clone aligns with the gene accession number as a point of reference only. However, individual transcript sequences of the same gene can differ through naturally occurring variations (e.g. polymorphisms), each with its own valid existence. This clone is substantially in agreement with the reference, but a complete review of all prevailing variants is recommended prior to use. [More info](#)

OTI Annotation: This clone was engineered to express the complete ORF with an expression tag. Expression varies depending on the nature of the gene.

Components:	The ORF clone is ion-exchange column purified and shipped in a 2D barcoded Matrix tube containing 10ug of transfection-ready, dried plasmid DNA (reconstitute with 100 ul of water).
Reconstitution Method:	<ol style="list-style-type: none">1. Centrifuge at 5,000xg for 5min.2. Carefully open the tube and add 100ul of sterile water to dissolve the DNA.3. Close the tube and incubate for 10 minutes at room temperature.4. Briefly vortex the tube and then do a quick spin (less than 5000xg) to concentrate the liquid at the bottom.5. Store the suspended plasmid at -20°C. The DNA is stable for at least one year from date of shipping when stored at -20°C.
RefSeq:	<u>NM_001207016.1</u> , <u>NP_001193945.1</u>
RefSeq Size:	2650 bp
RefSeq ORF:	1356 bp
Locus ID:	5801
UniProt ID:	<u>Q15256</u>
Cytogenetics:	12q15
Protein Families:	Druggable Genome, Phosphatase, Transmembrane
Protein Pathways:	MAPK signaling pathway
Gene Summary:	The protein encoded by this gene is a member of the protein tyrosine phosphatase (PTP) family. PTPs are known to be signaling molecules that regulate a variety of cellular processes including cell growth, differentiation, mitotic cycle, and oncogenic transformation. This PTP possesses an extracellular region, a single transmembrane region, and a single intracellular catalytic domain, and thus represents a receptor-type PTP. Silencing of this gene has been associated with colorectal cancer. Multiple transcript variants encoding different isoforms have been found for this gene. This gene shares a symbol (PTPRQ) with another gene, protein tyrosine phosphatase, receptor type, Q (GeneID 374462), which is also located on chromosome 12. [provided by RefSeq, May 2011]