

Product datasheet for **RG232751**

Histidase (HAL) (NM_001258333) Human Tagged ORF Clone

Product data:

| | |
|---------------------------|---|
| Product Type: | Expression Plasmids |
| Product Name: | Histidase (HAL) (NM_001258333) Human Tagged ORF Clone |
| Tag: | TurboGFP |
| Symbol: | HAL |
| Synonyms: | HIS; HSTD |
| Mammalian Cell Selection: | Neomycin |
| Vector: | pCMV6-AC-GFP (PS100010) |
| E. coli Selection: | Ampicillin (100 ug/mL) |



[View online »](#)

ORF Nucleotide Sequence:

>RG232751 representing NM_001258333
 Red=Cloning site Blue=ORF Green=Tags(s)

TTTTGTAATACGACTCACTATAGGGCGGCCGGGAATTCGTCGACTGGATCCGGTACCGAGGAGATCTGCC
 GCCGCGATCGCC

ATGCTCTTGGCTTTAAGGATCAATGTCTTAGCCAAAGGATACAGTGGCATTTCCTGGAGACCCTCAAAC
 AAGTCATAGAAAATGTTTAAATGCCTCCTGCCTGCCCTATGTCCCAGAGAAAAGGAACCGTTGGTGCCAGTGG
 AGACCTTGCCCACTCTCTCATCTTGTCTTGGGCTAGTTGGAGAAGGGAAGATGTGGTCTCCGAAGAGT
 GGCTGGGCTGATGCTAAATACGTGCTAGAAGCCCATGGATTGAAACCAGTTATTTTAAAACAAAAGAGG
 GCCTGGCACTCATCAATGGGACGCAGATGATCACATCCCTGGGCTGTGAAGCTGTAGAGCGAGCCAGTGC
 TATTGCACGGCAGGCTGACATTGTGGCAGCCCTGACCCTTGAGGTGCTGAAGGGCACCACAAAGCCTTT
 GACTGACATTCATGCTCTTCGACCTCACCGTGGGCAAATTGAAGTTGCTTTTCGGTTTCGGTCACTCT
 TGGACTCAGATCACCACCCATCAGAAATAGCAGAGAGTACAGGTTCTGTGATCGCGTCCAGGATGCATA
 CACCTTGGCTGTGTCCACAGGTCCATGGTGTGGTGAATGATACAATAGCATTTGTGAAGAACATCATT
 ACCACAGAAGTGAACAGCGCAACAGATAATCCTATGGTCTTTGCCAATAGGGGAGAGACAGTTTCTGGAG
 GAAACTTCCATGGTGAATACCCAGCCAAAGCCCTAGACTACTTGGCCATTGGCATCCATGAACCTGCTGC
 AATCAGTGAGAGAAGAATCGAGCGGCTCTGCAATCCCTCCCTCAGTGAGCTGCCTGCCTTCTGGTGGCT
 GAAGGTGGTCTGAACTCTGGGTTTATGATAGCTCACTGCACGGCAGCAGCCCTTGTCTGAGAACAAGG
 CTCTGTGCCATCCCTCGTCTGTTGACTCCCTCTCCACCAGCGCAGCCACGGAGGACCACGCTCCATGGG
 AGGATGGCAGCAAGGAAAGCCCTCAGGGTTCATCGAGCATGTGGAGCAAGTGTGGCCATCGAGCTCCTT
 GCAGCCTGCCAGGCATAGAGTTTCTACGTCCCCTGAAAACAACCACTCCGCTGGAGAAGGTCTATGACC
 TGGTGGCTCTGTTGTAAGGCCCTGGATAAAAAGATCGCTTACGGCCCGGACATCGAGGCAGCCACAG
 GCTGCTCCTGGAGCAGAAGGTTTGGGAAGTAGCTGCTCCATACATTGAAAATACAGAATGGAGCATATT
 CCAGAATCAAGACCTCTTTCTCCAACAGCCTTTTCACTGCAATTTCTGCACAAGAAATCCACCAAATCC
 CGGAGTCTGAGGACCTT

ACGCGTACGCGGCCGCTCGAG - GFP Tag - GTTTAA

Protein Sequence:

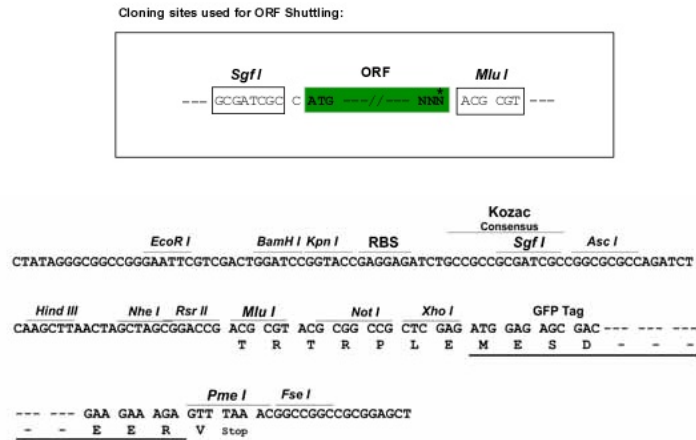
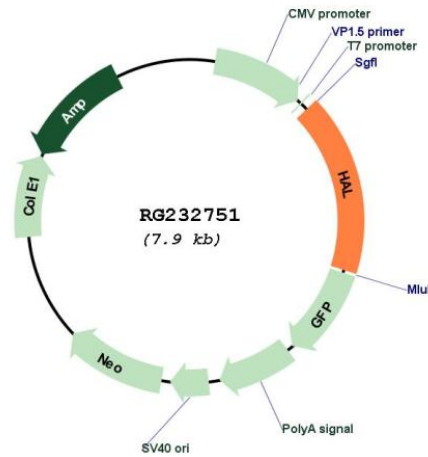
>RG232751 representing NM_001258333
 Red=Cloning site Green=Tags(s)

MLLALRINVLAKGYSGISLETLKQVIEMFNASCLPYVPEKGTVGASGDLAPLSHLALGLVGEKMWSPKS
 GWADAKYVLEAHGLKPVILKPKLEGLALINGTQMITSLGCEAVERASAIARQADIVAALTLEVLKGTTKAF
 DTDIHALRPHRGQIEVAFRFRSLDSDHHPSEIAESHRFCDRVQDAYTLRCCPQVHGVVNDTIAFVKNI
 TTELNSATDNPMVFANRGETVSGGNFHGEYPAKALDYLAIGIHELAAISERRIERLCNPSELPAFLVA
 EGGLNSGFMIHCTAAALVSENKALCHPSSVDSLSTSAATEDHVSMGGWAARKALRVIEHVEQVLAIELL
 AACQGIIEFLRPLKTTTTPLEKVYDLVRSVVRPWIKDRFMAPDIEAAHRLLEQKVVEVAAPYIEKYRMEHI
 PESRPLSPTAFSLQFLHKKSTKIPESDL

TRTRPLE - GFP Tag - V

Restriction Sites:

SgfI-MluI

Cloning Scheme:

Plasmid Map:


ACCN: NM_001258333

ORF Size: 1347 bp

OTI Disclaimer: The molecular sequence of this clone aligns with the gene accession number as a point of reference only. However, individual transcript sequences of the same gene can differ through naturally occurring variations (e.g. polymorphisms), each with its own valid existence. This clone is substantially in agreement with the reference, but a complete review of all prevailing variants is recommended prior to use. [More info](#)

OTI Annotation: This clone was engineered to express the complete ORF with an expression tag. Expression varies depending on the nature of the gene.

| | |
|-------------------------------|---|
| Components: | The ORF clone is ion-exchange column purified and shipped in a 2D barcoded Matrix tube containing 10ug of transfection-ready, dried plasmid DNA (reconstitute with 100 ul of water). |
| Reconstitution Method: | <ol style="list-style-type: none">1. Centrifuge at 5,000xg for 5min.2. Carefully open the tube and add 100ul of sterile water to dissolve the DNA.3. Close the tube and incubate for 10 minutes at room temperature.4. Briefly vortex the tube and then do a quick spin (less than 5000xg) to concentrate the liquid at the bottom.5. Store the suspended plasmid at -20°C. The DNA is stable for at least one year from date of shipping when stored at -20°C. |
| RefSeq: | <u>NM_001258333.1</u> , <u>NP_001245262.1</u> |
| RefSeq Size: | 3860 bp |
| RefSeq ORF: | 1350 bp |
| Locus ID: | 3034 |
| UniProt ID: | <u>P42357</u> |
| Cytogenetics: | 12q23.1 |
| Protein Families: | Druggable Genome |
| Protein Pathways: | Histidine metabolism, Metabolic pathways, Nitrogen metabolism |
| Gene Summary: | Histidine ammonia-lyase is a cytosolic enzyme catalyzing the first reaction in histidine catabolism, the nonoxidative deamination of L-histidine to trans-urocanic acid. Histidine ammonia-lyase defects cause histidinemia which is characterized by increased histidine and histamine and decreased urocanic acid in body fluids. Several transcript variants encoding different isoforms have been found for this gene. [provided by RefSeq, Apr 2012] |