

## Product datasheet for **RG232745**

### **MFSD11 (NM\_001242533) Human Tagged ORF Clone**

#### **Product data:**

Product Type:	Expression Plasmids
Product Name:	MFSD11 (NM_001242533) Human Tagged ORF Clone
Tag:	TurboGFP
Symbol:	MFSD11
Synonyms:	ET
Mammalian Cell Selection:	Neomycin
Vector:	pCMV6-AC-GFP (PS100010)
E. coli Selection:	Ampicillin (100 ug/mL)



[View online »](#)

**ORF Nucleotide Sequence:**

>RG232745 representing NM\_001242533  
 Red=Cloning site Blue=ORF Green=Tags(s)

TTTTGTAATACGACTCACTATAGGGCGGCCGGAATTCGTCGACTGGATCCGGTACCGAGGAGATCTGCC  
 GCC**CGCATCGCC**

ATGTC**CCCCGGAATCTAAAAAGCTTTTCAACATCATTATTTTAGGAGTTGCCTTTATGTTTATGTTCACTG**  
**CCTTTCAAAC**TTGTGAAATGTGGCGCAA**ACTGTCATCAGGAGCTTAAATAGGACAGATTTTCACGGCAG**  
**TGGATATACCAGCATGGCTATTATCTATGGAGTGTCTCTGCTTCAAATTTGATTACACCGTCAGTGGTT**  
**GCCATTGTAGGACCTCAACTCTCTATGTTTGCCAGTGGTTATTTTACAGCATGTACATTGCCGTTTTCA**  
**TCCAGCCTTTCCCGTGGTCTTCTACACAGCCTCTGTTTTATTGGAATTGCTGCTGTGCTTTGGAC**  
**AGCACAAGGAACTGCCTGACAATCAATTCGGATGAGCACAGCATTGGGAGAAACAGTGGGATTTTCTGG**  
**GCATTCTGCAGTCTAGCTTGTCTTTGGAAATCTCTACATATATTTGCCTGGCAAGGGAAAACTCAGA**  
**TATCAGAGAGTGACCGAAGAACAGTGTATTGCCCTAACGGTGATTAGCCTTGTGGGGACAGTCTTATT**  
**CTTTCTCATTTCGAAACAGATTCTGAAAATGTCTAGGAGAAGATGAGTCTTCTGATGACCAGGACATG**  
**GAAGTCAACGAGTCTGCCAGAACAATCTGACAAAGGCAGTAGATGCTTTTAAAAAGTCTTTAAGTTAT**  
**GTGTCACCAAGGAGATGCTCCTTCTTAGTATTACAACCTGTTATACAGGTCTGGAATTAACCTTCTCTC**  
**TGGTGTATATGGAACCTGTATTGGTGCTACAAATAAATTTGGAGCAGAAGAGAAAAGCCTTATTGGACTT**  
**TCTGGCATTTCATCGGCATTGGAGAAATTTAGGTGGAAGCCTCTTCGGCCTGCTGAGCAAGAACAATC**  
**GTTTTGGTAGAAATCCAGTTGTGCTGTTGGGCATCCTGGTGCACCTCATAGCTTTTTATCTAATATTTCT**  
**CAACATGCCTGGAGATGCCCGATTGCTCCTGTAAAGGAACTGACAGCAGTGTACATCAAATCCAGC**  
**AAAGAAGTTGCCATTCTCTGCAGTTTTCTGTTGGCCTTGAGACAGCTGCTTTAATACCCAGCTGCTTA**  
**GTATCTTGGGCTTCTGTATTCTGAAGACAGCGCCCGCAGCATTGGCCATTTCAAGTTTGTTCAGTCTAT**  
**TTGCGCAGCCGTGGCATTTTTCTACAGCAACTACCTTCTCCTTCACTGGCAACTCCTGGTCATGGTGATA**  
**TTTGGTTTTTTGGAACAATTTCTTTCTCACTGTGGAATGGGAAGCTGCCGCTTTGTAGCCCGCGGCT**  
**CTGACTACCGAAGTATC**

**ACGCGTACGCGGCCGCTCGAG** - GFP Tag - GTTTAA

**Protein Sequence:**

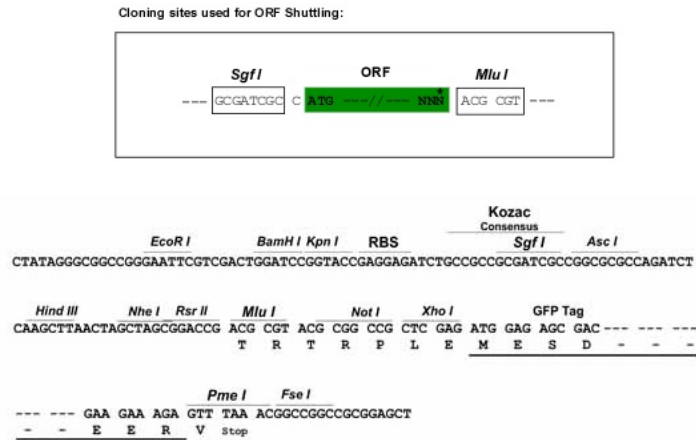
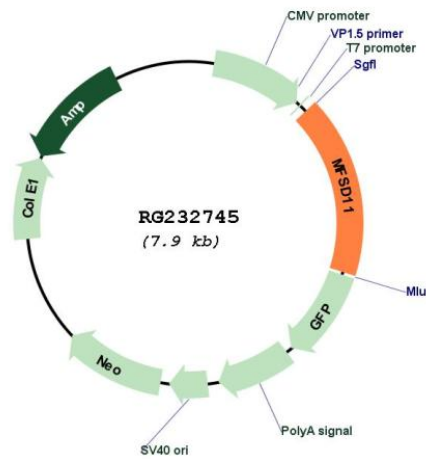
>RG232745 representing NM\_001242533  
 Red=Cloning site Green=Tags(s)

MSPE**S**KKLFNIIILGVAFMFMTAFQTCGNVAQTVIRSLNRTDFHGSYTSMAIIYGVFSASNLITPSV**V**  
 AIVGPQLSMFASGLFYSMYIAVFIQPPWFSFYTASVFIGIAAAVLWTAQGNCLTINSDEHSIGRNSGIFW  
 ALLQSS**L**FFGNLYIYFAWQK**TQISE**SDRRTVFIALTVISLVGT**VLFFL**IRKPDS**ENVLGEDESSDDQDM**  
 EVNESAQNNLTKAVDAFKK**SFKLCVTKEM**LLLSITTAYTGLELTF**FSGVY**GT**CIGAT**NKFGA**E**EKSLIGL  
 SGIFIGIGEILGGSLF**GLLSKNNRFGRNP**VVLLGILVHFIAFYLI**FLNMPGD**APIAPVK**GT**DSSAYIKSS  
 KEVA**ILCS**FL**LGLD**SCFNT**QLLSILG**F**LY**SEDSAPAF**AIFK**FVQ**SICAAVA**FFYSNY**LL**LHW**QL**LMVI  
 FGFFGTIS**FF**TV**EW**EA**AF**VARGSDYRSI

**TRTRPLE** - GFP Tag - V

**Restriction Sites:**

Sgfl-MluI

**Cloning Scheme:**

**Plasmid Map:**


**ACCN:** NM\_001242533

**ORF Size:** 1347 bp

**OTI Disclaimer:** The molecular sequence of this clone aligns with the gene accession number as a point of reference only. However, individual transcript sequences of the same gene can differ through naturally occurring variations (e.g. polymorphisms), each with its own valid existence. This clone is substantially in agreement with the reference, but a complete review of all prevailing variants is recommended prior to use. [More info](#)

**OTI Annotation:** This clone was engineered to express the complete ORF with an expression tag. Expression varies depending on the nature of the gene.

<b>Components:</b>	The ORF clone is ion-exchange column purified and shipped in a 2D barcoded Matrix tube containing 10ug of transfection-ready, dried plasmid DNA (reconstitute with 100 ul of water).
<b>Reconstitution Method:</b>	<ol style="list-style-type: none"><li>1. Centrifuge at 5,000xg for 5min.</li><li>2. Carefully open the tube and add 100ul of sterile water to dissolve the DNA.</li><li>3. Close the tube and incubate for 10 minutes at room temperature.</li><li>4. Briefly vortex the tube and then do a quick spin (less than 5000xg) to concentrate the liquid at the bottom.</li><li>5. Store the suspended plasmid at -20°C. The DNA is stable for at least one year from date of shipping when stored at -20°C.</li></ol>
<b>RefSeq:</b>	<u><a href="#">NM_001242533.2</a></u>
<b>RefSeq Size:</b>	2988 bp
<b>RefSeq ORF:</b>	1350 bp
<b>Locus ID:</b>	79157
<b>UniProt ID:</b>	<u><a href="#">O43934</a></u>
<b>Cytogenetics:</b>	17q25.1-q25.2
<b>Protein Families:</b>	Transmembrane