

Product datasheet for **RG232744**

MFSD11 (NM_001242532) Human Tagged ORF Clone

Product data:

Product Type:	Expression Plasmids
Product Name:	MFSD11 (NM_001242532) Human Tagged ORF Clone
Tag:	TurboGFP
Symbol:	MFSD11
Synonyms:	ET
Mammalian Cell Selection:	Neomycin
Vector:	pCMV6-AC-GFP (PS100010)
E. coli Selection:	Ampicillin (100 ug/mL)



[View online »](#)

ORF Nucleotide Sequence:

>RG232744 representing NM_001242532
 Red=Cloning site Blue=ORF Green=Tags(s)

TTTTGTAATACGACTCACTATAGGGCGGCCGGAATTCGTCGACTGGATCCGGTACCGAGGAGATCTGCC
 GCC**CGCATCGCC**

ATGTC**CCCCGGAATCTAAAAAGCTTTTCAACATCATTATTTTAGGAGTTGCCTTTATGTTTATGTTCACTG**
CCTTTCAAACTTGTGAAATGTGGCGCAA**ACTGTCATCAGGAGCTTAAATAGGACAGATTTTCACGGCAG**
TGGATATACCAGCATGGCTATTATCTATGGAGTGTCTCTGCTTCAAATTTGATTACACCGTCAGTGGTT
GCCATTGTAGGACCTCAACTCTCTATGTTTGCCAGTGGTTATTTTACAGCATGTACATTGCCGTTTTCA
TCCAGCCTTTCCCGTGGTCTTCTACACAGCCTCTGTTTTATTGGAATTGCTGCTGTGCTTTGGAC
AGCACAAGGAACTGCCTGACAATCAATTCGGATGAGCACAGCATTGGGAGAAACAGTGGGATTTTCTGG
GCACTTCTGCAGTCTAGCTTGTCTTTGGAAATCTCTACATATATTTGCCTGGCAAGGGAAA**ACTCAGA**
TATCAGAGAGTGACCGAAGAACAGTGTATTGCCCTAACGGTGATTAGCCTTGTGGGACAGTCTTATT
CTTTCTCATTCGAAACAGATTCTGAAATGTCTAGGAGAAGATGAGTCTTCTGATGACCAGGACATG
 GAAGTCAACGAGTCTGCCAGAACAATCTGACAAAGGCAGTAGATGCTTTTAA**AAAAAGTCTTTAAGTTAT**
 GTGTCACCAAGGAGATGCTCCTTCTTAGTATTACA**ACTGCTTATACAGGCTGGAATTA**ACTTTCTCTC
 TGGTGTATATGGAACCTGTATTGGTGTACAAATAAATTTGGAGCAGAAAGAGAAAAGCCTTATTGGACTT
 TCTGGCATT**TTT**CATCGGCATTGGAGAAATTTAGGTGGAAGCCTCTTCGGCCTGCTGAGCAAGAA**CAATC**
 GTTTTGGTAGAAATCCAGTTGTGCTGTTGGGCATCCTGGTGC**ACTTCATAGCTTTTTATCTAATATTTCT**
 CAACATGCCTGGAGATGCCCGATTGCTCCTGTTAAAGGA**ACTGACAGCAGTGTACATCAAATCCAGC**
 AAAGAAGTTGCCATTCTCTGCAGTTTCTGTTGGCCTTGAGACAGCTGCTTTAATACCCAGCTGCTTA
 GTATCTTGGGCTTTCTGTATTCTGAAGACAGCGCC**CCAGCATTTGCCATTTCAAGTTTGTTCAGTCTAT**
 TTGCGCAGCCGTGGCATT**TTTCTACAGCAACTACCTTCTCCTTCACTGGCAACTCCTGGTCATGGTGATA**
 TTTGGGTTTTTGGAA**CAATTTCTTTCTCACTGTGGAATGGAAGCTGCCGCTTTGTAGCCCGCGGCT**
 CTGACTACCGAAGTATC

ACGCGTACGCGGCCGCTCGAG - GFP Tag - GTTTAA

Protein Sequence:

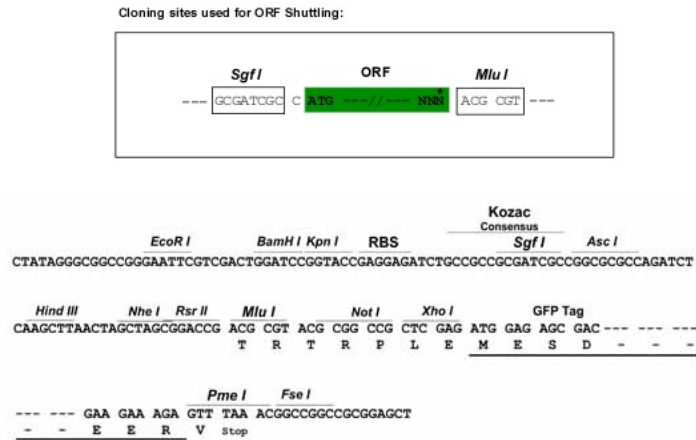
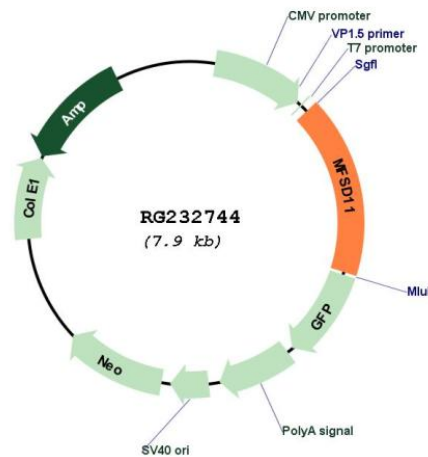
>RG232744 representing NM_001242532
 Red=Cloning site Green=Tags(s)

MSPE**S**KKLFNIIILGVAFMFMTAFQTCGNVAQTVIRSLNRTDFHGS**G**YTSMAIIYGVFSASNLITPSV**V**
 AIVGPQLSMFASGLFY**S**MYIAVFIQPPW**S**FYASVFIGIAAAVLWTAQGNCLTINSDEHSIGRNSGIFW
 ALLQSS**L**FFGNLYIYFAWQ**G**KTQISESDRRTVFI**A**LTVISLVGT**V**LFFLIRKPDS**E**NVLGEDESSDDQDM
 EVNESAQ**N**NLTKAVDAFKK**S**FKLCVTK**E**MLLLSITTAYTGLELTF**F**SGVYGT**C**IGATNKFGA**E**EKSLIGL
 SGIFIGI**G**EILGGSLF**L**L**S**KNNRFGRNPV**L**L**G**ILVHFIAFY**L**IFLNMPGD**A**PIAPVKGT**D**SSAYIK**S**
 KEVA**I**LCS**F**LLGLGDSC**F**NTQLLSILGFLYSEDS**A**PAFAIFKFVQ**S**ICA**A**V**A**FFYSNY**L**LLHW**Q**LLVM**V**I
 FGFFGT**I**SFF**T**VEW**E**AAAFVARGSD**Y**RS**I**

TRTRPLE - GFP Tag - V

Restriction Sites:

Sgfl-MluI

Cloning Scheme:

Plasmid Map:


ACCN: NM_001242532

ORF Size: 1347 bp

OTI Disclaimer: The molecular sequence of this clone aligns with the gene accession number as a point of reference only. However, individual transcript sequences of the same gene can differ through naturally occurring variations (e.g. polymorphisms), each with its own valid existence. This clone is substantially in agreement with the reference, but a complete review of all prevailing variants is recommended prior to use. [More info](#)

OTI Annotation: This clone was engineered to express the complete ORF with an expression tag. Expression varies depending on the nature of the gene.

Components:	The ORF clone is ion-exchange column purified and shipped in a 2D barcoded Matrix tube containing 10ug of transfection-ready, dried plasmid DNA (reconstitute with 100 ul of water).
Reconstitution Method:	<ol style="list-style-type: none">1. Centrifuge at 5,000xg for 5min.2. Carefully open the tube and add 100ul of sterile water to dissolve the DNA.3. Close the tube and incubate for 10 minutes at room temperature.4. Briefly vortex the tube and then do a quick spin (less than 5000xg) to concentrate the liquid at the bottom.5. Store the suspended plasmid at -20°C. The DNA is stable for at least one year from date of shipping when stored at -20°C.
RefSeq:	<u>NM_001242532.4</u>
RefSeq Size:	3104 bp
RefSeq ORF:	1350 bp
Locus ID:	79157
UniProt ID:	<u>O43934</u>
Cytogenetics:	17q25.1-q25.2
Protein Families:	Transmembrane