

## Product datasheet for **RG232654**

### GPR161 (NM\_001267612) Human Tagged ORF Clone

#### Product data:

**Product Type:** Expression Plasmids  
**Product Name:** GPR161 (NM\_001267612) Human Tagged ORF Clone  
**Tag:** TurboGFP  
**Symbol:** GPR161  
**Synonyms:** RE2  
**Mammalian Cell Selection:** Neomycin  
**Vector:** pCMV6-AC-GFP (PS100010)  
**E. coli Selection:** Ampicillin (100 ug/mL)  
**ORF Nucleotide Sequence:** >RG232654 representing NM\_001267612  
Red=Cloning site Blue=ORF Green=Tags(s)

TTTTGTAATACGACTCACTATAGGGCGGCCGGAATTCGTCGACTGGATCCGGTACCGAGGAGATCTGCC  
 GCCCGATCGCC

ATGGTGTACCCCATGAAGATCACAGGGAACCGGGCTGTGATGGCACTTGTCTACATCTGGCTTCACTCGC  
 TCATCGGCTGCCTGCCACCCCTGTTGGTTGGTCATCCGTGGAGTTTGACGAGTTCAAATGGATGTGTGT  
 GGCTGCTTGGCACCAGGAGCCTGGCTACACGGCCTTTCGGCAGATCTGGTGTGCCCTCTTCCCTTTCTG  
 GTCATGCTGGTGTGCTATGGCTTCATCTCCGCGTGGCCAGGGTCAAGGCACGCAAGGTGCACTGTGGCA  
 CAGTCGTCATCGTGGAGGAGGATGCTCAGAGGACCGGGAGGAAGAACTCCAGCACCTCCACCTCCTCTTC  
 AGGCAGCAGGAGGAATGCCTTTCAGGGTGTGGTCTACTCGCCAACCAAGTCAAAAGCCCTCATCACCATC  
 CTGGTGGTCTCGGTGCCTTCATGGTCACCTGGGGCCCTACATGGTGTGTCATCGCTCTGAGGCCCTCT  
 GGGGAAAAGCTCCGTCTCCCGAGCCTGGAGACTTGGGCCACATGGCTGTCTTTGCCAGCGCTGTCTG  
 CCACCCCTGATCTATGGACTCTGGAACAAGACAGTTCGCAAAGAAGTACTGGGCATGTGCTTTGGGGAC  
 CGGTATTATCGGGAACCATTTGTGCAACGACAGAGGACTTCCAGGCTCTTCAGCATTTCCAACAGGATCA  
 CAGACCTGGGCCCTGTCCCACACCTCACTGCGCTCATGGCAGGTGGACAGCCCTGGGGCACAGCAGCAG  
 CACGGGGACACTGGCTTCAGCTGCTCCCAGGACTCAGGGACAGATATGATGCTGCTTGAGGACTACACG  
 TCTGATGACAACCCTCCCTCTCACTGCATTTGCCACCCAAGAGAAGGAGCTCGGTGACATTTGAGGATG  
 AAGTGGAAACAAATCAAAGAAGCTGCAAGAAGTCCGATTCTTCATGTGAAAGCTGAAGTACACAAGTCTT  
 GGACAGTTACGCAGCAAGCTTGGCCAAAGCCATTGAGGCCGAAGCCAAAATCAACTATTGTTGGGAGGAG  
 GCTTTGCCAGGGTCTTGGTTACAGCACGGACTGTCCCGGGGGCGGCTTCGGGGGCCGCGAGGCAGCA  
 GAACTCTGTGAGCCAGAGGCTGCAGTTGCAGAGCATCGAAGAAGGAGATGTTTTAGCTGCCGAGCAGAG  
 A

ACGCGTACGCGGCCGCTCGAG - GFP Tag - GTTTAA



[View online »](#)

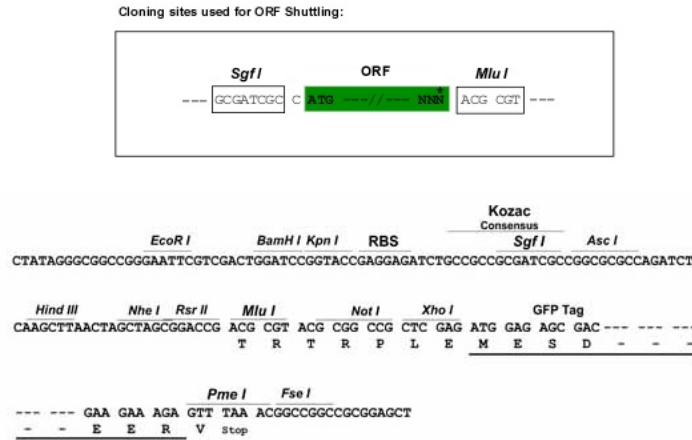
**Protein Sequence:** >RG232654 representing NM\_001267612  
 Red=Cloning site Green=Tags(s)

MVYPMKITGNRAVMALVYIWLHSLIGCLPPLFGWSSVEFDEFKWMCVAAWHREPGYAFWQIWCALFPFL  
 VMLVICYGFI FRVARVKARKVHC GTVVIVEEDAQRTGRKNSSTSTSSSGSRRNAFQGVVYSANQCKALITI  
 LVVLGAFMVTWGPYMVVIASEALWGKSSVSPSLETWATWLSFASAVCHPLIYGLWNKTVRKELLMCFGD  
 RYYREPFVQRQRTSRLFSISNRITDLGLSPHLTALMAGGQPLGHSSTGDTGFSCSQSDGTMMLLEDYT  
 SDDNPPSHCTCPPKRRSSVTFEDEVQIKEAAKNSILHVKAIEVHKSLSDSYAASLAKAIEAEAKINLFGEE  
 ALPGVLTARTVPGGGFGRRRSRTLVSQRLQLQSIIEGDVLAEEQR

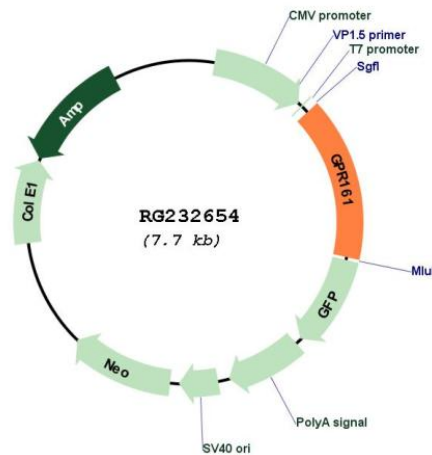
TRTRPLE - GFP Tag - V

**Restriction Sites:** SgfI-MluI

**Cloning Scheme:**



**Plasmid Map:**



**ACCN:** NM\_001267612

<b>ORF Size:</b>	1191 bp
<b>OTI Disclaimer:</b>	The molecular sequence of this clone aligns with the gene accession number as a point of reference only. However, individual transcript sequences of the same gene can differ through naturally occurring variations (e.g. polymorphisms), each with its own valid existence. This clone is substantially in agreement with the reference, but a complete review of all prevailing variants is recommended prior to use. <a href="#">More info</a>
<b>OTI Annotation:</b>	This clone was engineered to express the complete ORF with an expression tag. Expression varies depending on the nature of the gene.
<b>Components:</b>	The ORF clone is ion-exchange column purified and shipped in a 2D barcoded Matrix tube containing 10ug of transfection-ready, dried plasmid DNA (reconstitute with 100 ul of water).
<b>Reconstitution Method:</b>	<ol style="list-style-type: none"><li>1. Centrifuge at 5,000xg for 5min.</li><li>2. Carefully open the tube and add 100ul of sterile water to dissolve the DNA.</li><li>3. Close the tube and incubate for 10 minutes at room temperature.</li><li>4. Briefly vortex the tube and then do a quick spin (less than 5000xg) to concentrate the liquid at the bottom.</li><li>5. Store the suspended plasmid at -20°C. The DNA is stable for at least one year from date of shipping when stored at -20°C.</li></ol>
<b>RefSeq:</b>	<a href="#">NM_001267612.2</a>
<b>RefSeq Size:</b>	7771 bp
<b>RefSeq ORF:</b>	1194 bp
<b>Locus ID:</b>	23432
<b>UniProt ID:</b>	<a href="#">Q8N6U8</a>
<b>Cytogenetics:</b>	1q24.2
<b>Protein Families:</b>	Druggable Genome, GPCR, Transmembrane
<b>Gene Summary:</b>	The protein encoded by this gene is an orphan G protein-coupled receptor whose ligand is unknown. This gene is overexpressed in triple-negative breast cancer, and disruption of this gene slows the proliferation of basal breast cancer cells. Therefore, this gene is a potential drug target for triple-negative breast cancer. [provided by RefSeq, Mar 2017]