

Product datasheet for **RG232628**

ST3GAL6 (NM_001271145) Human Tagged ORF Clone

Product data:

Product Type:	Expression Plasmids
Product Name:	ST3GAL6 (NM_001271145) Human Tagged ORF Clone
Tag:	TurboGFP
Symbol:	ST3GAL6
Synonyms:	SIAT10; ST3GALVI
Mammalian Cell Selection:	Neomycin
Vector:	pCMV6-AC-GFP (PS100010)
E. coli Selection:	Ampicillin (100 ug/mL)
ORF Nucleotide Sequence:	>RG232628 representing NM_001271145 Red=Cloning site Blue=ORF Green=Tags(s)

TTTTGTAATACGACTCACTATAGGGCGGCCGGAATTCGTCGACTGGATCCGGTACCGAGGAGATCTGCC
GCC**CGATCGCC**

ATGTGGCAGGCGCCGCGAGAGAGGCAGCAGCCGGCTGGAGCAGCGGCCCTCAGGTCTCGGAGCCCGGTG
CGCCTCTGCGGTCGTCGCTCCTGGGCTCGGCGGGTCACTTGGCCGGCCGGCTTCGCTGCGGGTTTGA
CTGCCCGGTGAGCCAGCCATGAGAGGGTATCTTGTGGCCATATTCCTGAGTGTCTTCTCTATTAT
GTACTGCATTGCATATTATGGGAACGAATGTCTATTGGGTGGCACCTGTGAAATGAAACGGAGAATA
AGATCCAGCCTTGTTTATCAAAGCCAGCTTTTGCCTCTGCTGAGGTTTCATCAGTTTCACCCCTTTCT
GTGTGCGGCTGATTTTAGAAAGATTGCTTCCTGTATGGTAGCGATAAGTTTGATTTGCCCTATGGGATG
AGAACATCAGCGGAATATTTTCTGACTTGCTCTTCAAACCTGCAGAGTTGTGATCTCTTTGATGAGTTT
ACAACATACCCGTGAAAAAGTGTGTGGTGGTAAATGGAGGAGTTTGAAGAATAAGACATTAGGAGA
AAAAATCGACTCCTATGATGTAATAAAGAATGAATAATGGTCTGTTTTAGGACATGAAGAAGAAGTT
GGGAGAAGGACAACCTTCCGACTTTTTATCCAGAATCTGTTTTTTCAGATCCTATTACAATGACCCTA
ATACGACAGTGATTCTCACTGCTTTAAGCCACATGATTTAAGGTGGCTGTTGGAATTGTTGATGGGTGA
CAAATAAACACTAATGGTTTTTGAAGAACCAGCCTTAAACCTGATTTATAAACCTTATCAAATCCGA
ATATTAGATCCTTTTATTATCAGAACAGCAGCTTATGAAGTCTTCAATTTCCAAAGTGTTCACCAAAA
ATCAGAAACCTAAACACCAACAACAGGAATTATTGCCATCACATTGGCGTTTTACATATGTCACGAAGT
TCACCTAGCTGGTTTTAATAACAATTTTCTGACCTCAAGAGTCTTTGCACTACTATGGGAATGCCACC
ATGTCTTTGATGAATAAGAACGCGTATCACAATGTGACTGCAGAGCAGCTCTTTTGAAGGACATTATAG
AAAAAACCTCGTAATCAACTTGACTCAAGAT

AGCGGACCGACGCGTACGCGGCCGCTCGAG - GFP Tag - GTTTAA



[View online »](#)

Protein Sequence: >RG232628 representing NM_001271145
 Red=Cloning site Green=Tags(s)

MWQAPRERQQPAGAAAPQVSEPGAPLRSSLLGLGGSLLPAGFAAGLHCPGEPAMRGLVAIFLSAVFLYY
 VLHCILWGTNVYVAVPEMKRRNKIQPCLSKPAFASLLRFHQFHPFLCAADFRKIASLYGSDKFDLPYGM
 RTSAEYFRLALSKLQSCDLDFEDFNIPCKKCVVVGNGGVLKNKTLGEKIDSYDVIIRMNNGPVLGHEEEV
 GRRTTFRLFYPESVFSDP IHNDPNTTVILTAFKPHDLRWLLELLMGDKINTNGFWKKPALNLIYKPYQIR
 ILDPFIIRTAAYELLHFPKVFPKNQPKHPHTTGI IAITLAFYICHEVHLAGFKYFSDLKSPLHYGNAT
 MSLMKNAYHNVTAEQLFLKDIIEKNLVINLTQD

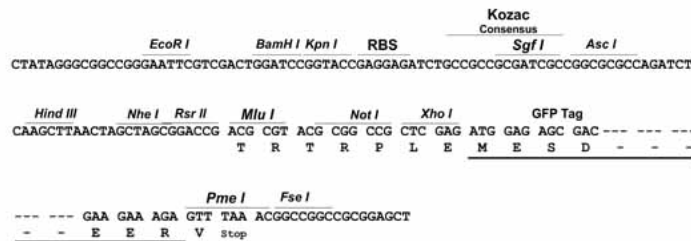
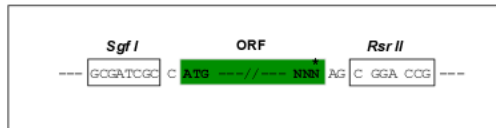
SGP^{TRRRLE} - GFP Tag - V

Restriction Sites:

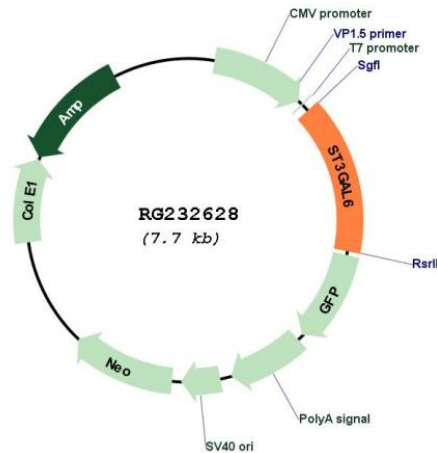
Sgfl-RsrII

Cloning Scheme:

Cloning sites used for ORF Shuttling:



Plasmid Map:



ACCN:

NM_001271145

ORF Size:	1152 bp
OTI Disclaimer:	The molecular sequence of this clone aligns with the gene accession number as a point of reference only. However, individual transcript sequences of the same gene can differ through naturally occurring variations (e.g. polymorphisms), each with its own valid existence. This clone is substantially in agreement with the reference, but a complete review of all prevailing variants is recommended prior to use. More info
OTI Annotation:	This clone was engineered to express the complete ORF with an expression tag. Expression varies depending on the nature of the gene.
Components:	The ORF clone is ion-exchange column purified and shipped in a 2D barcoded Matrix tube containing 10ug of transfection-ready, dried plasmid DNA (reconstitute with 100 ul of water).
Reconstitution Method:	<ol style="list-style-type: none">1. Centrifuge at 5,000xg for 5min.2. Carefully open the tube and add 100ul of sterile water to dissolve the DNA.3. Close the tube and incubate for 10 minutes at room temperature.4. Briefly vortex the tube and then do a quick spin (less than 5000xg) to concentrate the liquid at the bottom.5. Store the suspended plasmid at -20°C. The DNA is stable for at least one year from date of shipping when stored at -20°C.
RefSeq:	NM_001271145.1 , NP_001258074.1
RefSeq Size:	3399 bp
RefSeq ORF:	1155 bp
Locus ID:	10402
UniProt ID:	Q9Y274
Cytogenetics:	3q12.1
Protein Families:	Transmembrane
Protein Pathways:	Glycosphingolipid biosynthesis - lacto and neolacto series, Metabolic pathways
Gene Summary:	The protein encoded by this gene is a member of the sialyltransferase family. Members of this family are enzymes that transfer sialic acid from the activated cytidine 5'-monophospho-N-acetylneuraminic acid to terminal positions on sialylated glycolipids (gangliosides) or to the N- or O-linked sugar chains of glycoproteins. This protein has high specificity for neolactotetraosylceramide and neolactohexaosylceramide as glycolipid substrates and may contribute to the formation of selectin ligands and sialyl Lewis X, a carbohydrate important for cell-to-cell recognition and a blood group antigen. [provided by RefSeq, Apr 2016]