

Product datasheet for **RG232580**

GIMAP6 (NM_001244072) Human Tagged ORF Clone

Product data:

Product Type:	Expression Plasmids
Product Name:	GIMAP6 (NM_001244072) Human Tagged ORF Clone
Tag:	TurboGFP
Symbol:	GIMAP6
Synonyms:	IAN-2; IAN-6; IAN2; IAN6
Mammalian Cell Selection:	Neomycin
Vector:	pCMV6-AC-GFP (PS100010)
E. coli Selection:	Ampicillin (100 ug/mL)
ORF Nucleotide Sequence:	>RG232580 representing NM_001244072 Red=Cloning site Blue=ORF Green=Tags(s)

TTTTGTAATACGACTCACTATAGGGCGGCCGGAATTCGTCGACTGGATCCGGTACCGAGGAGATCTGCC
GCC**CGATCGCC**

ATGGAGGAAGAAGAATATGAACAAATCCCAGGAGAATCCCCAGAAGAGCTGTCCAGGATCCTGTGC
TGGAGCTGTCAGGAGGCTCTGCTCTTGCCTGGGAGAGAACGTTACGCCACCTTCAAGGATGTGGGCC
CAGAATGGTGGCCAGCGCTGGTTTCAGGGCAGATGTTGGTCTTTACAATCTGCCCTGCAGTCTGGG
GTACACCCAGAGGCTCCTGGTGATGACAAGATGGGTACATGGGCCCTTACCCAGTTCCTCTGCTTTT
TTTGGATATTTCTAGGTCTAAGGGAGAAAGAACAAGACCCCAAGGAGACTGAGGCTCATTCTCATGGG
GAAAACAGGGAGTGGGAAGAGTGCAACAGGAAACAGCATCCTCGGCAGGGACGCTTCGAGTCTAAACT
AGCACCAGACCCGTGACCAAGACCTCCCAGAGACGGAGCCGAGAGTGGGCTGGGAAGGAGCTTGAGGTGA
TTGACACACCCAACATTCTGTCCCCCAGGTCTCGCCAGAGGTGGCAGACGCTATCTGCCAAGCCATCGT
CTTATCCGCCCCAGGGCCCCACGCCGTGCTCCTGGTGACACAACCTGGGCCGTTACGGATGAGGATCAG
CAGGTGGTCAGGCGCTGCAGGAGGTCTTTGGAGTGGGGTCTGGGTACACCATCCTGGTGTTCACCC
GGAAGGAAGACCTGGCTGGCGCTCCCTGGAAGACTATGTGCGAGAGACCAACAACAGGCCCTTGCCCTG
GCTGGATGTGACCCTTGACGGCGCCATTGCGGCTTCAACAACAGGGCACAGGGGGAGGAGCAGGAGGCC
CAACTGCGAGAGCTCATGGAGAAAAGTTGAAGCCATTATGTGGAAAACGAAGGAGATTATTACAGCAACA
AGGCTTACCAATATACCCAGCAAACTTTCGGCTGAAAGAAGTACAGGAAAGGCAAGTAAGCCAGGGCCA
AGGCTCTGAGGACGTGCCTGGTGGAGGACTTGGCTGGAAGGACTGTCCAGATCCAGAAGGAATCTGAG
GAAGCCACAGATGCCTGCTGGGAAGGCTGACCTT

ACGCGTACGCGGCCGCTCGAG - GFP Tag - GTTTAA



[View online »](#)

Protein Sequence: >RG232580 representing NM_001244072
Red=Cloning site Green=Tags(s)

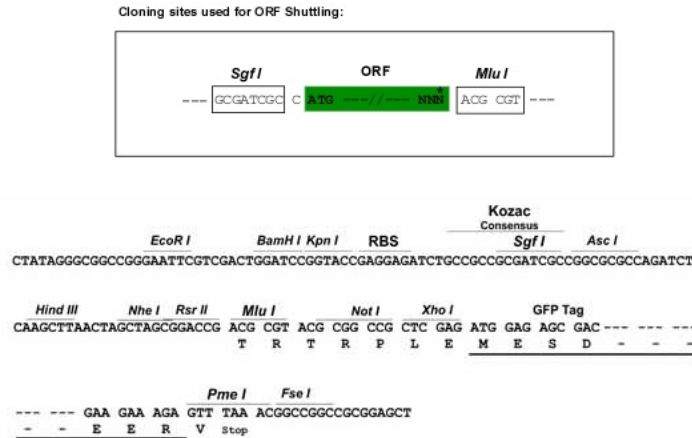
MEEEEYEQIPQENPPEELSQDPVLELSGGALALGENVQPHLQGCGRMVAQRWFQGRCSFTICPCSLG
 VHPEAPGDDKMGYMGYPSSLCFLWIFLGLREKEQKTPRRLRLILMGKTGSGKSATGNSILGRDVFESKL
 STRPVTKTSQRRSREWAGKELEVIDTPNILSPQVSPEVADAIQAIIVLSAPGPHAVLLVTQLGRFTDEDQ
 QVVRRLQEVFVGVLGHTILVFTRKEDLAGGSLEDYVRETNNQALAWLDVTLARRHCGFNNRAQGEEQEA
 QLRELMKVEAIMWENEGDYYSNKAYQYTQQNFRKLKELQERQVSQGGQSEDVPGEEVWLEGLSQQIQKES
 EAHRCLLGKADL

TRTRPLE - GFP Tag - V

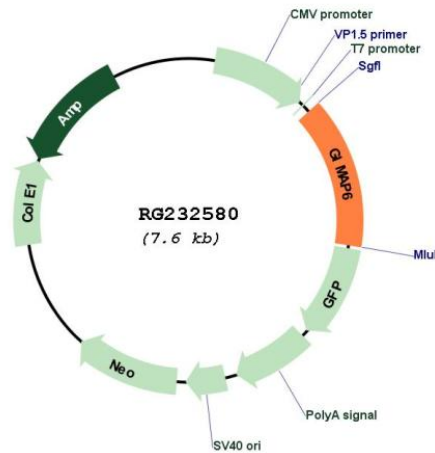
Restriction Sites:

SgfI-MluI

Cloning Scheme:



Plasmid Map:



ACCN:

NM_001244072

ORF Size:	1086 bp
OTI Disclaimer:	The molecular sequence of this clone aligns with the gene accession number as a point of reference only. However, individual transcript sequences of the same gene can differ through naturally occurring variations (e.g. polymorphisms), each with its own valid existence. This clone is substantially in agreement with the reference, but a complete review of all prevailing variants is recommended prior to use. More info
OTI Annotation:	This clone was engineered to express the complete ORF with an expression tag. Expression varies depending on the nature of the gene.
Components:	The ORF clone is ion-exchange column purified and shipped in a 2D barcoded Matrix tube containing 10ug of transfection-ready, dried plasmid DNA (reconstitute with 100 ul of water).
Reconstitution Method:	<ol style="list-style-type: none">1. Centrifuge at 5,000xg for 5min.2. Carefully open the tube and add 100ul of sterile water to dissolve the DNA.3. Close the tube and incubate for 10 minutes at room temperature.4. Briefly vortex the tube and then do a quick spin (less than 5000xg) to concentrate the liquid at the bottom.5. Store the suspended plasmid at -20°C. The DNA is stable for at least one year from date of shipping when stored at -20°C.
RefSeq:	NM_001244072.1 , NP_001231001.1
RefSeq Size:	3926 bp
RefSeq ORF:	1089 bp
Locus ID:	474344
UniProt ID:	Q6P9H5
Cytogenetics:	7q36.1
Gene Summary:	This gene encodes a member of the GTPases of immunity-associated proteins (GIMAP) family. GIMAP proteins contain GTP-binding and coiled-coil motifs, and may play roles in the regulation of cell survival. Decreased expression of this gene may play a role in non-small cell lung cancer. Alternatively spliced transcript variants encoding multiple isoforms have been observed for this gene, which is found in a cluster with seven additional GIMAP genes on the long arm of chromosome 7. [provided by RefSeq, Sep 2011]