

Product datasheet for **RG232578**

PELI3 (NM_001243136) Human Tagged ORF Clone

Product data:

Product Type:	Expression Plasmids
Product Name:	PELI3 (NM_001243136) Human Tagged ORF Clone
Tag:	TurboGFP
Symbol:	PELI3
Mammalian Cell Selection:	Neomycin
Vector:	pCMV6-AC-GFP (PS100010)
E. coli Selection:	Ampicillin (100 ug/mL)
ORF Nucleotide Sequence:	>RG232578 representing NM_001243136 Red=Cloning site Blue=ORF Green=Tags(s)

TTTTGTAATACGACTCACTATAGGGCGGCCGGAATTCGTCGACTGGATCCGGTACCGAGGAGATCTGCC
GCC**CGATCGCC**

ATGCACCACATCTCCACGCCGCTCGTCTCCAAGGCACTGAGTAACCGTGGTCAGCACAGCATCTCGTATA
CACTGTCCCGGAGCCACTCGGTCATAGTGGAGTATACACATGATAGCGACACAGACATGTTCCAGATTGG
CCGCTCCACAGAGAACATGATTGACTTCGTGGTAACAGACACGTCCCCTGGAGGAGGGGCTGCCGAGGGC
CCTTCTGCCAGAGCACCATCTCCCGCTATGCCGTGCCGCATCCTCTGTGACCGCCGGCCACCCTATACTG
CCGCGATCTATGCCGCTGGCTTCGATGCCCTAGCAACATCTTCCTTGGAGAGCGAGCGGCCAAATGGCG
GACCCCAGATGGCCTGATGGATGGACTGACCACCAATGGAGTCCCTGGTGTGCACCCGGCAGGCCGCTTC
TCCGAGGACTCAGCCCCGGGTGTCTGGCGGAGATCTCGGTCTGTGGAATGTGTACACATTGCGGGACA
GCCGCTCAGCCCAGCAGCGGGCAAGCTGGTGGAAAACGAGTCCAACGTGCTGCAGGACGGCTCTCTCAT
CGACCTGTGTGGGGCCACTGCTGTGGCGCACACCGCGGGGCTGCTGCGGGCTCCACACTGAAGCAA
CTGGAGGCCAGCGGCAGGAGGCAATGCAGCGCGGCCCCAGTCCCCGTGGGCTCAGCACTCTGGCCT
TCCCCAGCCCAGCCGTGGCCGACAGCGCCGACAAACAGCAGCCCTGGGTCTACGTCCGCTGCGGGCA
CGTCCATGGCTACCACGGCTGGGCTGCCGGCGGAGCGGGCCCCAGGAGCGGAATGCTCTCTGTC
CGCCTTGTGGGCCTTATGTGCCTCTATGGCTTGCCAGGAGCCGGCCTCTGCCTGGACCTGGGCGC
CTAGCCATGCCTTGCACCTGCGGCCACGTCTGCTCTGAGAAGACTGCCCGCTACTGGGCCAGACACC
ACTGCCCCACGGCACCCATGCTTTCATGCCGCTGCCCTTTTGGCGGGCCTGGCTTACCGCGCAGCAT
GGCTGCGTCCGCCTATTTCCAGGGCCCGCTGGAT

ACGCGTACGCGGCCGCTCGAG - GFP Tag - GTTTAA



[View online »](#)

Protein Sequence: >RG232578 representing NM_001243136
Red=Cloning site Green=Tags(s)

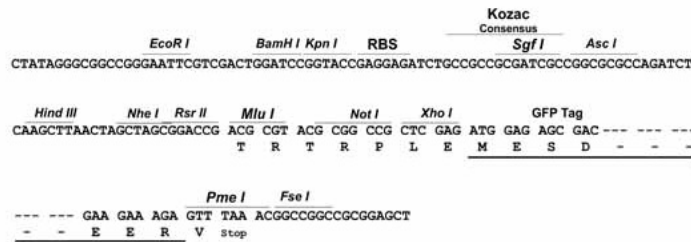
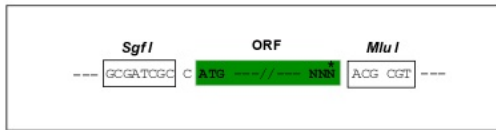
MHHISTPLVSKALSNRGQHSISYTLRSHSVIVEYTHSDTDMFQIGRSTENMIDFVVTDTSPPGGAAEG
 PSAQSTISRYACRILCDRRPPYTARIYAAGFDASSNIFLGERAAKWRTPDGLMDGLTTNGVLVMHPAGGF
 SEDSAPGVWREISVCGNVYTLRDSRSAQQRGKLVENESNVLQDGLIDLGCATLLWRTPAGLLRAPTLKQ
 LEAQRQEANAARPQCVPVGLSTLAFSPARGRTAPDKQQPWVYVRCGHVHGYPGWGCRREGRGPQERECPLC
 RLVGPYVPLWLGQEAAGLCLDPGPPSHAFAPCGHVCSEKTARYWAQTPHPGTHAFHAACPF CGAWLTGEH
 GCVRLIFQGPLD

TRTRPLE - GFP Tag - V

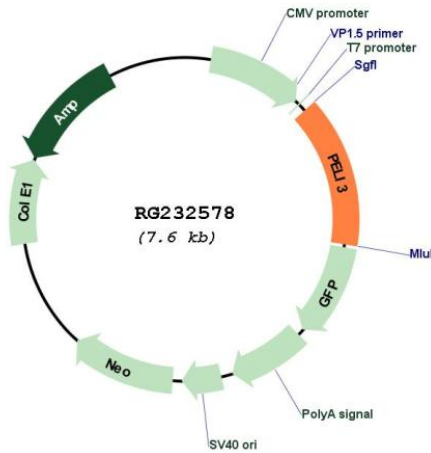
Restriction Sites: SgfI-MluI

Cloning Scheme:

Cloning sites used for ORF Shuttling:



Plasmid Map:



ACCN: NM_001243136

ORF Size:	1086 bp
OTI Disclaimer:	The molecular sequence of this clone aligns with the gene accession number as a point of reference only. However, individual transcript sequences of the same gene can differ through naturally occurring variations (e.g. polymorphisms), each with its own valid existence. This clone is substantially in agreement with the reference, but a complete review of all prevailing variants is recommended prior to use. More info
OTI Annotation:	This clone was engineered to express the complete ORF with an expression tag. Expression varies depending on the nature of the gene.
Components:	The ORF clone is ion-exchange column purified and shipped in a 2D barcoded Matrix tube containing 10ug of transfection-ready, dried plasmid DNA (reconstitute with 100 ul of water).
Reconstitution Method:	<ol style="list-style-type: none">1. Centrifuge at 5,000xg for 5min.2. Carefully open the tube and add 100ul of sterile water to dissolve the DNA.3. Close the tube and incubate for 10 minutes at room temperature.4. Briefly vortex the tube and then do a quick spin (less than 5000xg) to concentrate the liquid at the bottom.5. Store the suspended plasmid at -20°C. The DNA is stable for at least one year from date of shipping when stored at -20°C.
RefSeq:	NM_001243136.1 , NP_001230065.1
RefSeq Size:	2538 bp
RefSeq ORF:	1089 bp
Locus ID:	246330
UniProt ID:	Q8N2H9
Cytogenetics:	11q13.2
Gene Summary:	The protein encoded by this gene is a scaffold protein and an intermediate signaling protein in the innate immune response pathway. The encoded protein helps transmit the immune response signal from Toll-like receptors to IRAK1/TRAF6 complexes. Several transcript variants encoding different isoforms have been found for this gene.[provided by RefSeq, Jul 2011]