

## Product datasheet for **RG232536**

### MFF (NM\_001277061) Human Tagged ORF Clone

#### Product data:

**Product Type:** Expression Plasmids  
**Product Name:** MFF (NM\_001277061) Human Tagged ORF Clone  
**Tag:** TurboGFP  
**Symbol:** MFF  
**Synonyms:** C2orf33; EMPF2; GL004  
**Mammalian Cell Selection:** Neomycin  
**Vector:** pCMV6-AC-GFP (PS100010)  
**E. coli Selection:** Ampicillin (100 ug/mL)  
**ORF Nucleotide Sequence:** >RG232536 representing NM\_001277061  
Red=Cloning site Blue=ORF Green=Tags(s)

TTTTGTAATACGACTCACTATAGGGCGCCGGGAATTCGTCGACTGGATCCGGTACCGAGGAGATCTGCC  
GCC**CGATCGCC**

ATGAGTAAAGGAACAAGCAGTGACACATCACTAGGAAGGGTGAGCAGGGCAGCATTTCTTCTCCCACTG  
CTGCTGAGATGGCAGAAATTAGTCGAATTCAGTACGAAATGGAATATACTGAAGGCATTAGTCAGCGAAT  
GAGGGTCCAGAAAAGTTAAAAGTAGCACCGCCAAACGCTGACCTGGAACAAGGATTCGAAGAAGGAGTT  
CCAAATGCTAGTGTGATAATGCAAGTCCGGAGAGGATTGTTGTAGCAGGAAATAATGAAGATGTTTCAT  
TTTCAAGACCAGCAGATCTTGACCTTATTCAGTCAACTCCCTTTAAACCCCTGGCACTGAAAACACCACC  
TCGTGTACTTACGCTGAGTGAAAGACCACTAGATTTTCTGGATTTAGAAAGACCTCTACAACCCCTCAA  
AATGAAGAAATCCGAGCAGTTGGCAGACTAAAAAGAGAGCGGTCTATGAGTGAAAATGCTGTTCCGCAAA  
ATGGACAGCTGGTCAGAAATGATTCTCTGTGGCACAGATCAGATTCTGCCCAAGAAAATAAATTTCAAG  
GTTCCAGGCACCGATTTCTGCACCGGAGTACACTGTGACACCATCGCCACAACAGGCTCGGGTCTGTCT  
CCCCATATGTTACCTGAAGATGGAGCTAATCTTCTCTGCTCGTGGCATTGTTGTCGCTTATCCAGTCTT  
CTACTCGTAGGGCATACCAGCAGATCTTGGATGTGCTGGATGAAAATCGCAGACCTGTGTTGCGTGGTGG  
GTCTGCTGCCGCCACTTCTAATCCTCATCATGACAACGTCAGGTATGGCATTTCAAATATAGATAACAAC  
ATTGAAGGAACGTCAGATGACCTGACTGTTGTAGATGCAGCTTCACTAAGACGACAGATAATCAAACCTAA  
ATAGACGCTACAACCTTCTGGAAGAGGAGAACAAGAACGTGCTAAAAGAGAAAATGGTCATGTATTCAAT  
TACTGTAGCTTTCTGGCTGCTTAATAGCTGGCTCTGGTTTCGCCCG

**ACGCGT**ACGCGGCCGCTCGAG - GFP Tag - GTTTAA



[View online »](#)

**Protein Sequence:** >RG232536 representing NM\_001277061  
Red=Cloning site Green=Tags(s)

MSKGTSSDTS LGRVSR AAFPSP TAAEMAEI SRIQYEM EYTEGISQ RMRVPEK LKVAPPNADLE QGFQEGV  
 PNASVIMQVPERIVVAGNNEDVFSRPADLDLIQSTPFKPLALKT PPRVLTLSERPLDFLDLERPPTTPQ  
 NEEIRAVGRLKRERSMSENAVRQNGQLVRNDSLWHRSDSAPRNKISR FQAPISAPEYTVTPSPQQARVCP  
 PHMLPEDGANLSSARGILSLIQSSTRRAYQQILDVLDENRRPVL RGGSA AATSNPHHDNVR YGISNIDTT  
 IEGTSDDLTVVDAASLR RQIIKLNRR LQLLEENKERAKREVMYSITVAFWLLNSWLWFR R

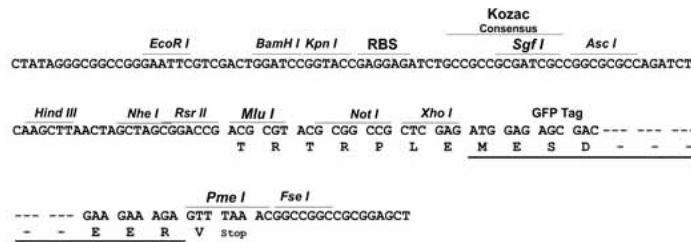
TRTRPLE - GFP Tag - V

**Restriction Sites:**

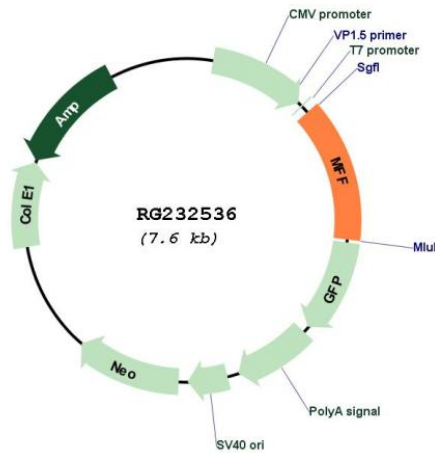
SgfI-MluI

**Cloning Scheme:**

Cloning sites used for ORF Shuttling:



**Plasmid Map:**



**ACCN:** NM\_001277061

**ORF Size:** 1026 bp

<b>OTI Disclaimer:</b>	The molecular sequence of this clone aligns with the gene accession number as a point of reference only. However, individual transcript sequences of the same gene can differ through naturally occurring variations (e.g. polymorphisms), each with its own valid existence. This clone is substantially in agreement with the reference, but a complete review of all prevailing variants is recommended prior to use. <a href="#">More info</a>
<b>OTI Annotation:</b>	This clone was engineered to express the complete ORF with an expression tag. Expression varies depending on the nature of the gene.
<b>Components:</b>	The ORF clone is ion-exchange column purified and shipped in a 2D barcoded Matrix tube containing 10ug of transfection-ready, dried plasmid DNA (reconstitute with 100 ul of water).
<b>Reconstitution Method:</b>	<ol style="list-style-type: none"><li>1. Centrifuge at 5,000xg for 5min.</li><li>2. Carefully open the tube and add 100ul of sterile water to dissolve the DNA.</li><li>3. Close the tube and incubate for 10 minutes at room temperature.</li><li>4. Briefly vortex the tube and then do a quick spin (less than 5000xg) to concentrate the liquid at the bottom.</li><li>5. Store the suspended plasmid at -20°C. The DNA is stable for at least one year from date of shipping when stored at -20°C.</li></ol>
<b>RefSeq:</b>	<a href="#">NM_001277061.2</a>
<b>RefSeq Size:</b>	2277 bp
<b>RefSeq ORF:</b>	1029 bp
<b>Locus ID:</b>	56947
<b>UniProt ID:</b>	<a href="#">Q9GZY8</a>
<b>Cytogenetics:</b>	2q36.3
<b>Protein Families:</b>	Transmembrane
<b>Gene Summary:</b>	This is a nuclear gene encoding a protein that functions in mitochondrial and peroxisomal fission. The encoded protein recruits dynamin-1-like protein (DNM1L) to mitochondria. There are multiple pseudogenes for this gene on chromosomes 1, 5, and X. Alternative splicing results in multiple transcript variants. [provided by RefSeq, Mar 2013]