

## Product datasheet for **RG232524**

### **LRRC39 (NM\_001256385) Human Tagged ORF Clone**

#### Product data:

Product Type:	Expression Plasmids
Product Name:	LRRC39 (NM_001256385) Human Tagged ORF Clone
Tag:	TurboGFP
Symbol:	LRRC39
Mammalian Cell Selection:	Neomycin
Vector:	pCMV6-AC-GFP (PS100010)
E. coli Selection:	Ampicillin (100 ug/mL)
ORF Nucleotide Sequence:	>RG232524 representing NM_001256385 Red=Cloning site Blue=ORF Green=Tags(s)

TTTTGTAATACGACTCACTATAGGGCGGCCGGAATTCGTCGACTGGATCCGGTACCGAGGAGATCTGCC  
GCC**CGATCGCC**

ATGACAGAAAATGTGGTTTGTACTGGGGCTGTCAATGCTGTAAGGAAGTTTGGGAAAAAGAATAAAGA  
AACTCAATGAAGACCTGAAGCGAGAGAAGGAATTTCAACACAAGCTAGTGCGGATCTGGGAAGAACGAGT  
AAGCTTAACCAAGCTAAGAGAAAAGTCCACCAGGGAAGATGGAAGAGTCATTTTGAAGATAGAAAAAGAG  
GAATGGAAGACCCTCCCTTCTTCTGCTGAAACTGAATCAACTACAGGAATGGCAACTTCATAGAAGT  
GTTTGCTGAAAATTCCTGAATTCATTGGAAGATTCCAGAACCTCATTGTGTTAGATTTATCTCGAAACAC  
AATTTTCAGAGATACCACCAGGGATTGGACTGCTTACTAGACTTCAGGAAGTATTCTCAGCTACAACAAA  
ATCAAGACTGTCCCAAGGAAGTAAAGTAATTGTGCCAGCTTGGAGAACTAGAACTGGCTGTTAACAGAG  
ATATATGTGATCTTCCACAAGAGCTCAGCAATCTGCTAAAACCTACTCACCTTGATCTGAGTATGAACGA  
TTTTACTACAATCCCTCTTGCTGTGTTGAACATGCCTGCCCTTGAGTGGCTGGACATGGGAAGCAACAAA  
CTTGAACAACCTCCTGATACTATAGAAAGAATGCAAAATCTACATACGTTATGGCTGCAACGAAATGAAA  
TAACATGCTTGCCTCAACAATCAGCAATATGAAAAATCTGGGTACTCTTGTCTCAGCAACAATAAACT  
GCAAGATATTCCAGTATGCATGGAAGAAATGGCAATCTGAGGTTTGTCAACTTCAGAGACAACCCACTG  
AAATTGAAAGTATCACTTCTCCAGTGAAGGCACAGATGAAGAAGAGGAACGGGAATTTTGGCCTTC  
AGTTTATGCACACATACATACAAGAGTACGGGAGAAGAGCAGCTCTTCAGTTTTGTGTTTGCATGGACA  
GATTCTGACAATATATACATGTATGGCTCTGAAATT

**ACGCGT**ACGCGGCCGCTCGAG - GFP Tag - GTTTAA



[View online »](#)

**Protein Sequence:** >RG232524 representing NM\_001256385  
 Red=Cloning site Green=Tags(s)

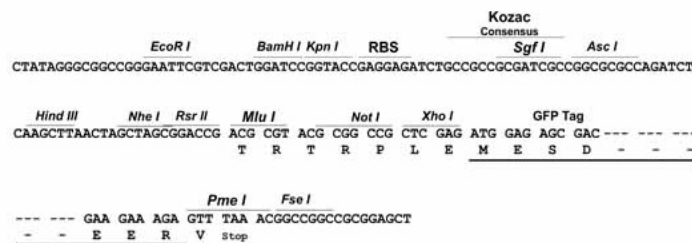
MTENVVCTGAVNAVKEVWEKRIKKLNEDLKREKEFQHKLVRIWEERVSLTKLREKVTREDGRVILKIEKE  
 EWKTLPSLLKLNQLQEWQLHRTGLLKIPEFIGRFQNLIVLDLSRNTISEIPPGIGLLTRLQELILSYNK  
 IKTVPKELSNCASLEKLELAVNRDIDLPOELSNLLKLTHLDLSMDFTTIPLAVLNMPALEWLDMGSNK  
 LEQLPDTIERMQLHTLWLQRNEITCLPQTI SNMKNLGLVLSNNKLQDIPVCMEEAMANLRFVNFDRNPL  
 KLVSLPPSEGTEEEERELFGLQFMHTYIQESRRRAALQFCVCHGQILTIIYTCMALEI

TRTRPLE - GFP Tag - V

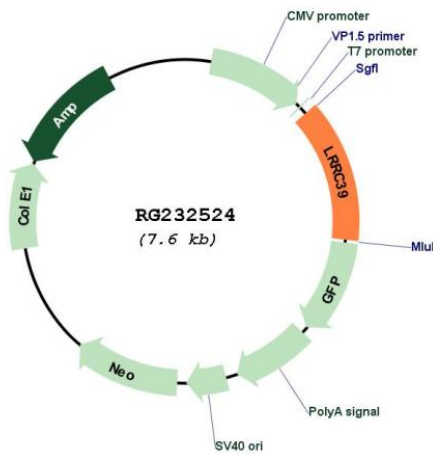
**Restriction Sites:** SgfI-MluI

**Cloning Scheme:**

Cloning sites used for ORF Shutting:



**Plasmid Map:**



**ACCN:** NM\_001256385

**ORF Size:** 1017 bp

<b>OTI Disclaimer:</b>	The molecular sequence of this clone aligns with the gene accession number as a point of reference only. However, individual transcript sequences of the same gene can differ through naturally occurring variations (e.g. polymorphisms), each with its own valid existence. This clone is substantially in agreement with the reference, but a complete review of all prevailing variants is recommended prior to use. <a href="#">More info</a>
<b>OTI Annotation:</b>	This clone was engineered to express the complete ORF with an expression tag. Expression varies depending on the nature of the gene.
<b>Components:</b>	The ORF clone is ion-exchange column purified and shipped in a 2D barcoded Matrix tube containing 10ug of transfection-ready, dried plasmid DNA (reconstitute with 100 ul of water).
<b>Reconstitution Method:</b>	<ol style="list-style-type: none"><li>1. Centrifuge at 5,000xg for 5min.</li><li>2. Carefully open the tube and add 100ul of sterile water to dissolve the DNA.</li><li>3. Close the tube and incubate for 10 minutes at room temperature.</li><li>4. Briefly vortex the tube and then do a quick spin (less than 5000xg) to concentrate the liquid at the bottom.</li><li>5. Store the suspended plasmid at -20°C. The DNA is stable for at least one year from date of shipping when stored at -20°C.</li></ol>
<b>RefSeq:</b>	<a href="#">NM_001256385.1</a> , <a href="#">NP_001243314.1</a>
<b>RefSeq Size:</b>	1952 bp
<b>RefSeq ORF:</b>	1020 bp
<b>Locus ID:</b>	127495
<b>UniProt ID:</b>	<a href="#">Q96DD0</a>
<b>Cytogenetics:</b>	1p21.2
<b>Protein Families:</b>	Druggable Genome
<b>Gene Summary:</b>	Component of the sarcomeric M-band which plays a role in myocyte response to biomechanical stress. May regulate expression of other M-band proteins via an SRF-dependent pathway. Important for normal contractile function in heart.[UniProtKB/Swiss-Prot Function]