

Product datasheet for **RG232514**

LRRC39 (NM_001256387) Human Tagged ORF Clone

Product data:

Product Type: Expression Plasmids
Product Name: LRRC39 (NM_001256387) Human Tagged ORF Clone
Tag: TurboGFP
Symbol: LRRC39
Mammalian Cell Selection: Neomycin
Vector: pCMV6-AC-GFP (PS100010)
E. coli Selection: Ampicillin (100 ug/mL)
ORF Nucleotide Sequence: >RG232514 representing NM_001256387
Red=Cloning site Blue=ORF Green=Tags(s)

TTTTGTAATACGACTCACTATAGGGCGGCCGGGAATTCGTCGACTGGATCCGGTACCGAGGAGATCTGCC
GCC**CGATCGCC**

ATGACAGAAAATGTGGTTTGTACTGGGGCTGTCAATGCTGTAAGGAAGTTTGGGAAAAAGAATAAAGA
AACTCAATGAAGACCTGAAGCGAGAGAAGGAATTTCAACACAAGCTAGTGCGGATCTGGGAAGAACGAGT
AAGCTTAACCAAGCTAAGAGAAAAGTCCAGGGAAGATGGAAGAGTCATTTGAAGATAGAAAAAGAG
GAATGGAAGACCCTCCCTTCTTCTGCTGAAACTGAATCAACTACAGGAATGGCAACTTCATAGAAGT
GTTTGCTGAAAATTCCTGAATTCATTGGAAGATCCAGAACCTCATTGTGTTAGATTTATCTCGAAACAC
AATTTTCAGAGATACCACCAGGGATTGGACTGCTTACTAGACTTCAGGAAGTATTCTCAGCTACAACAAA
ATCAAGACTGTCCCAAGGAAGTAAAGTAATTGTGCCAGCTTGGAGAACTAGAACTGGCTGTTAACAGAG
ATATATGTGATCTTCCACAAGAGCTCAGCAATCTGCTAAAACCTACTCACCTTGATCTGAGTATGAACGA
TTTTACTACAATCCCTCTTGCTGTGTTGAACATGCCTGCCCTTGAGTGGCTGGACATGGGAAGCAACAAA
CTTGAACAACCTCCTGATACTATAGAAAGAATGCAAAATCTACATACGTTATGGCTGCAACGAAATGAAA
TAACATGCTTGCCTCAACAATCAGCAATATGAAAATCTGGGTAAGTCTTGTCTCAGCAACAATAAAGT
GCAAGATATTCCAGTATGCATGGAAGAAATGGCAATCTGAGGTTTGTCAACTTCAGAGACAACCCACTG
AAATTGAAAGTATCACTTCTCCAGTGAAGGCACAGATGAAGAAGAGGAACGGGAATTTTGGCCTTC
AGTTTATGCACACATACATACAAGAGTACGGAGAAGAGCAGATACCAAGTCAACGGTTCAACTACTTT
ACCAATCTCCATAAATACGGATGGA

ACGCGTACGCGGCCGCTCGAG - GFP Tag - GTTTAA



[View online »](#)

Protein Sequence: >RG232514 representing NM_001256387
 Red=Cloning site Green=Tags(s)

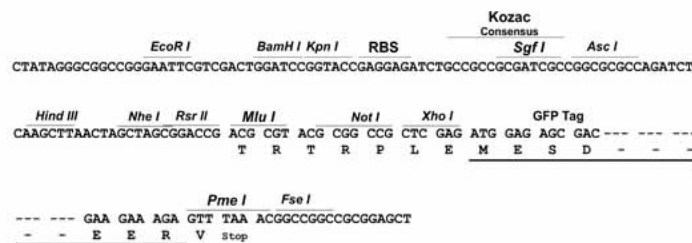
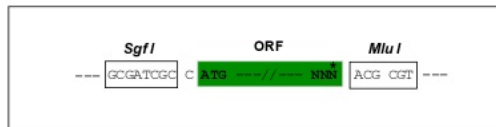
MTENVVCTGAVNAVKEVWEKRIKKLNEDLKREKEFQHKLVRIWEERVSLTKLREKVTREDGRVILKIEKE
 EWKTLPSLLKLNQLQEWQLHRTGLLKIPEFIGRFQNLIVLDLSRNTISEIPPGIGLLTRLQELILSYNK
 IKTVPKELSNCASLEKLELAVNRDIDLPQELSNLLKLTDLDSMDFTTIPLAVLNMPALEWLDMGSNK
 LEQLPDTIERMQLHTLWLQRNEITCLPQTI SNMKNLGTLLVLSNNKLQDIPVCMEEANLRFVNFDRNPL
 KLVSLPPSEGTEEEERELFGLQFMHTYIQESRRRRADHQVNGSTTLPISINTDG

TRTRPLE - GFP Tag - V

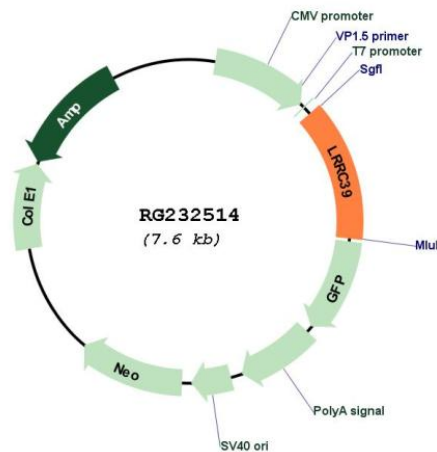
Restriction Sites: SgfI-MluI

Cloning Scheme:

Cloning sites used for ORF Shutting:



Plasmid Map:



ACCN: NM_001256387

ORF Size: 1005 bp

OTI Disclaimer:	The molecular sequence of this clone aligns with the gene accession number as a point of reference only. However, individual transcript sequences of the same gene can differ through naturally occurring variations (e.g. polymorphisms), each with its own valid existence. This clone is substantially in agreement with the reference, but a complete review of all prevailing variants is recommended prior to use. More info
OTI Annotation:	This clone was engineered to express the complete ORF with an expression tag. Expression varies depending on the nature of the gene.
Components:	The ORF clone is ion-exchange column purified and shipped in a 2D barcoded Matrix tube containing 10ug of transfection-ready, dried plasmid DNA (reconstitute with 100 ul of water).
Reconstitution Method:	<ol style="list-style-type: none">1. Centrifuge at 5,000xg for 5min.2. Carefully open the tube and add 100ul of sterile water to dissolve the DNA.3. Close the tube and incubate for 10 minutes at room temperature.4. Briefly vortex the tube and then do a quick spin (less than 5000xg) to concentrate the liquid at the bottom.5. Store the suspended plasmid at -20°C. The DNA is stable for at least one year from date of shipping when stored at -20°C.
RefSeq:	NM_001256387.1 , NP_001243316.1
RefSeq Size:	1825 bp
RefSeq ORF:	1008 bp
Locus ID:	127495
UniProt ID:	Q96DD0
Cytogenetics:	1p21.2
Protein Families:	Druggable Genome
Gene Summary:	Component of the sarcomeric M-band which plays a role in myocyte response to biomechanical stress. May regulate expression of other M-band proteins via an SRF-dependent pathway. Important for normal contractile function in heart.[UniProtKB/Swiss-Prot Function]