

## Product datasheet for **RG232509**

### Cathepsin V (CTSV) (NM\_001201575) Human Tagged ORF Clone

#### Product data:

Product Type:	Expression Plasmids
Product Name:	Cathepsin V (CTSV) (NM_001201575) Human Tagged ORF Clone
Tag:	TurboGFP
Symbol:	CTSV
Synonyms:	CATL2; CTSL2; CTSU
Mammalian Cell Selection:	Neomycin
Vector:	pCMV6-AC-GFP (PS100010)
E. coli Selection:	Ampicillin (100 ug/mL)
ORF Nucleotide Sequence:	>RG232509 representing NM_001201575 Red=Cloning site Blue=ORF Green=Tags(s)

TTTTGTAATACGACTCACTATAGGGCGGCCGGAATTCGTCGACTGGATCCGGTACCGAGGAGATCTGCC  
GCC**CGATCGCC**

ATGAATCTTTGCTCGCTCGCTGGCTGCCTTTTGGCTTGGGAATAGCCTCCGCTGTTCCAAAATTTGACCAA  
ATTTGGATACAAAGTGGTACCAGTGAAGGCAACACAGAAGATTATATGGCGGAATGAAGAAGGATG  
GAGGAGAGCAGTGTGGAAAAGAATATGAAAATGATTGAACTGCACAATGGGAATACAGCCAAGGGAAA  
CATGGCTTCACAATGGCCATGAATGCTTTTGGTGACATGACCAATGAAGAATTCAGGCAGATGATGGTT  
GCTTTTCGAAACCAGAAATTCAGGAAGGGGAAAGTGTCCGTGAGCCTCTGTTTCTTGATCTTCCCAATC  
TGTGGATTGGAGAAAGAAAGGCTACGTGACGCCAGTGAAGAATCAGAAACAGTGTGGTTCTTGTGGGCT  
TTTAGTGCAGCTGGTCTCTTGAAGGACAGATGTTCCGGAAAACCTGGGAACTTGTCTCACTGAGCGAGC  
AGAATCTGGTGGACTGTTTCGCTCCTCAAGGCAATCAGGGCTGCAATGGTGGCTTCATGGCTAGGGCCTT  
CCAGTATGTCAAGGAGAACGGAGGCTGGACTCTGAGGAATCCTATCCATATGTAGCAGTGGATGAAATC  
TGTAAGTACAGACCTGAGAATCTGTTGCTAATGACACTGGCTTCACAGTGGTCCGACCTGGAAAGGAGA  
AGGCCCTGATGAAAGCAGTCGCAACTGTGGGCCCATCTCCGTTGCTATGGATGCAGGCCATTTCGTCCTT  
CCAGTTCTACAAATCAGGCATTTATTTTGAACCAGACTGCAGCAGCAAAAACCTGGATCATGGTGTCTG  
GTGGTTGGCTACGGCTTTGAAGGAGCAAATTCGAATAACAGCAAGTATTGGCTCGTCAAAAACAGCTGGG  
GTCCAGAAATGGGCTCGAATGGCTATGTAAAAATAGCCAAAGACAAGAACAACCCTGTGGAATCGCCAC  
AGCAGCCAGCTACCCCAATGTG

**ACGCGT**ACGCGGCCGCTCGAG - GFP Tag - GTTTAA



[View online »](#)

**Protein Sequence:** >RG232509 representing NM\_001201575  
Red=Cloning site Green=Tags(s)

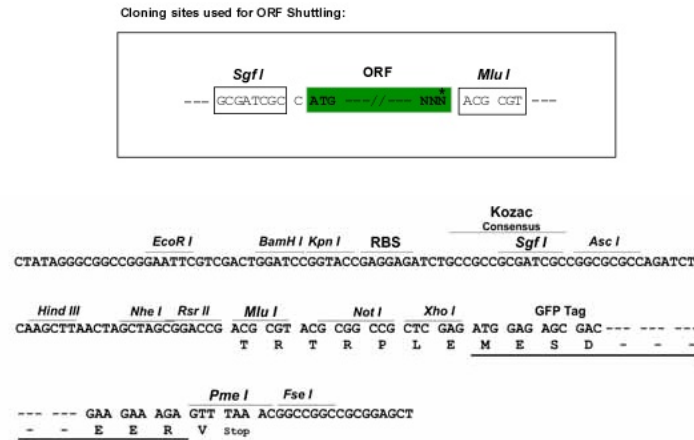
MNLSLVLAAFCLGIASAVPKFDQNLDTKWYQWKATHRRLLYGANEEGWRRRAVWEKNMKMIELHNGEYSQGK  
 HGFTMAMNAFGDMTNEEFRQMMGCFRNQKFRKGKVFREPLFLDLPKSVDWRKKGYVTPVKNQKQCGSCWA  
 FSATGALEGQMFRTKGLVLSLSEQNLVDCSRPQGNQCGNGGFMARAFQYVKENGGLDSEESYPYVAVDEI  
 CKYRPENSVANDTGFTVVAPGKEKALMKAVATVGPI SVAMDAGHSFQFYKSGIYFEPDCSSKNLDHGVL  
 VVGYGFE GANSNNKYWLKNSWGPEWGSNGYVKIAKDKNNHCGIATAASYPNV

TRTRPLE - GFP Tag - V

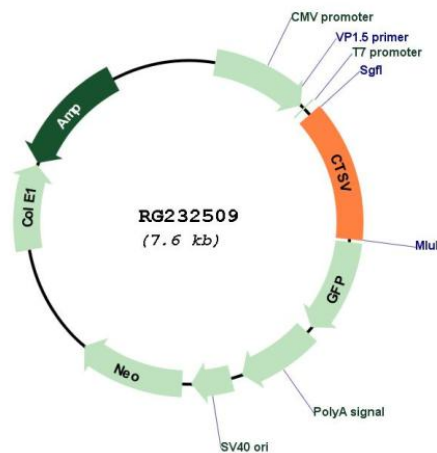
**Restriction Sites:**

Sgfl-MluI

**Cloning Scheme:**



**Plasmid Map:**



**ACCN:** NM\_001201575

**ORF Size:** 1002 bp

<b>OTI Disclaimer:</b>	The molecular sequence of this clone aligns with the gene accession number as a point of reference only. However, individual transcript sequences of the same gene can differ through naturally occurring variations (e.g. polymorphisms), each with its own valid existence. This clone is substantially in agreement with the reference, but a complete review of all prevailing variants is recommended prior to use. <a href="#">More info</a>
<b>OTI Annotation:</b>	This clone was engineered to express the complete ORF with an expression tag. Expression varies depending on the nature of the gene.
<b>Components:</b>	The ORF clone is ion-exchange column purified and shipped in a 2D barcoded Matrix tube containing 10ug of transfection-ready, dried plasmid DNA (reconstitute with 100 ul of water).
<b>Reconstitution Method:</b>	<ol style="list-style-type: none"><li>1. Centrifuge at 5,000xg for 5min.</li><li>2. Carefully open the tube and add 100ul of sterile water to dissolve the DNA.</li><li>3. Close the tube and incubate for 10 minutes at room temperature.</li><li>4. Briefly vortex the tube and then do a quick spin (less than 5000xg) to concentrate the liquid at the bottom.</li><li>5. Store the suspended plasmid at -20°C. The DNA is stable for at least one year from date of shipping when stored at -20°C.</li></ol>
<b>RefSeq:</b>	<a href="#">NM_001201575.1</a> , <a href="#">NP_001188504.1</a>
<b>RefSeq Size:</b>	4339 bp
<b>RefSeq ORF:</b>	1005 bp
<b>Locus ID:</b>	1515
<b>UniProt ID:</b>	<a href="#">O60911</a>
<b>Cytogenetics:</b>	9q22.33
<b>Protein Families:</b>	Druggable Genome, Protease
<b>Protein Pathways:</b>	Lysosome
<b>Gene Summary:</b>	The protein encoded by this gene, a member of the peptidase C1 family, is a lysosomal cysteine proteinase that may play an important role in corneal physiology. This gene is expressed in colorectal and breast carcinomas but not in normal colon, mammary gland, or peritumoral tissues, suggesting a possible role for this gene in tumor processes. Alternatively spliced variants, encoding the same protein, have been identified. [provided by RefSeq, Jan 2011]