

## Product datasheet for **RG232498**

### SEPTIN4 (NM\_001256822) Human Tagged ORF Clone

#### Product data:

Product Type:	Expression Plasmids
Product Name:	SEPTIN4 (NM_001256822) Human Tagged ORF Clone
Tag:	TurboGFP
Symbol:	SEPTIN4
Synonyms:	ARTS; BRADEION; C17orf47; CE5B3; H5; hCDCREL-2; hucep-7; MART; PNU TL2; SEP4; SEPT4
Mammalian Cell Selection:	Neomycin
Vector:	pCMV6-AC-GFP (PS100010)
E. coli Selection:	Ampicillin (100 ug/mL)
ORF Nucleotide Sequence:	>RG232498 representing NM_001256822 Red=Cloning site Blue=ORF Green=Tags(s)

TTTTGTAATACGACTCACTATAGGGCGGCCGGAATTCGTCGACTGGATCCGGTACCGAGGAGATCTGCC  
GCC**CGATCGCC**

ATGGTGGCAGGAGAGTCTGGCCTGGGCAAATCCACACTTGTCATAGCCTCTTCCTCACTGATCTGTACC  
GGGACCGGAAACTTCTTGGTGCTGAAGAGAGGATCATGCAAAGTGGAGATCACTAAGCATGCAGTGGA  
CATAGAAGAGAAGGGTGTGAGGCTGCGGCTCACCATTGTGGACACACCAGGTTTTGGGGATGCAGTCAAC  
AACACAGAGTGTGGAAGCCTGTGGCAGAATACATTGATCAGCAGTTTGAGCAGTATTCGAGACGAGA  
GTGGCCTGAACCGAAAGAACATCCAAGACAACAGGGTGCCTGCTGCCTGTACTTCATCTCACCCCTCGG  
CCATGGGCTCCGGCCATTGGATGTTGAATTCATGAAGGCCCTGCATCAGCGGGTCAACATCGTGCCTATC  
CTGGCTAAGGCAGACACACTGACACCTCCCGAAGTGGACCACAAGAAACGCAAAATCCGGGAGGAGATTG  
AGCATTTTGAATCAAGATCTATCAATCCAGACTGTGACTCTGATGAGGATGAGGACTTCAAATTGCA  
GGACCAAGCCCTAAAGGAAAGCATCCCATTGTCAGTAATTGGCAGCAACACTGTAGTAGAGGCCAGAGGG  
CGGCGAGTTCGGGGTCTACTCCCTGGGGCATCGTGGAAAGTGGAAAACCCAGGGCACTGCGACTTTG  
TGAAGCTGAGGACAATGCTGGTACGTACCCACATGCAGGACCTGAAGGATGTGACACGGGAGACACATTA  
TGAGAACTACCGGCACAGTGCATCCAGAGCATGACCCGCTGGTGGTGAAGGAACGGAATCGCAACAAA  
CTGACTCGGAAAGTGGTACCGACTTCCCATCCCTGCTGTCCCACAGGGACAGATCCGAAACTGAGA  
AGCTTATCCGAGAGAAAGATGAGGAGCTGCGGCCGATGCAGGAGATGCTACACAAAATACAAAACAGAT  
GAAGGAGAACTAT

**ACGCGT**ACGCGGCCGCTCGAG - GFP Tag - GTTTAA



[View online »](#)

**Protein Sequence:** >RG232498 representing NM\_001256822  
 Red=Cloning site Green=Tags(s)

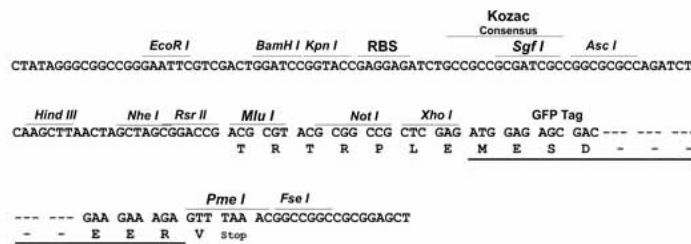
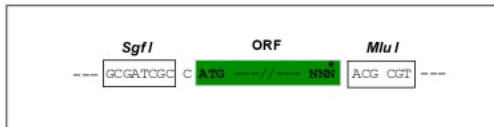
MVAGESGLGKSTLVNSLFLTDLYRDRKLLGAEERIMQTVEITKHAVDIEEKGVRLRLTIVDTPGFGDAVN  
 NTECWKPVAEYIDQQFEQYFRDESGLNRNKNIQDNRVHCCLYFISPFHGHLRPLDVEFMKALHQRVNI  
 LAKADTLTPPEVDHKKRRIREEIEHFGIKIYQFPDCSDEDEDFKLQDQALKESIPFAVIGSNTVVEARG  
 RRVGRGLYPWGI VEVENPGHCDFVKLR TMLVRTHMQDLKDV TRETHYENYRAQCIQSMTRLVVKERNRK  
 LTRESGTDFFIPAVPPGTDPETEKLIREKDEELRRMQEMLHKIQKQMKENY

TRTRPLE - GFP Tag - V

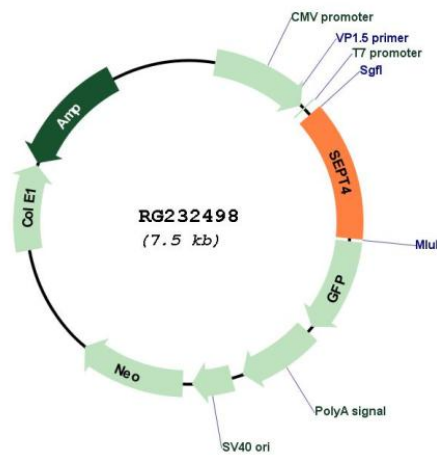
**Restriction Sites:** SgfI-MluI

**Cloning Scheme:**

Cloning sites used for ORF Shuttling:



**Plasmid Map:**



**ACCN:** NM\_001256822

**ORF Size:** 993 bp

<b>OTI Disclaimer:</b>	The molecular sequence of this clone aligns with the gene accession number as a point of reference only. However, individual transcript sequences of the same gene can differ through naturally occurring variations (e.g. polymorphisms), each with its own valid existence. This clone is substantially in agreement with the reference, but a complete review of all prevailing variants is recommended prior to use. <a href="#">More info</a>
<b>OTI Annotation:</b>	This clone was engineered to express the complete ORF with an expression tag. Expression varies depending on the nature of the gene.
<b>Components:</b>	The ORF clone is ion-exchange column purified and shipped in a 2D barcoded Matrix tube containing 10ug of transfection-ready, dried plasmid DNA (reconstitute with 100 ul of water).
<b>Reconstitution Method:</b>	<ol style="list-style-type: none"><li>1. Centrifuge at 5,000xg for 5min.</li><li>2. Carefully open the tube and add 100ul of sterile water to dissolve the DNA.</li><li>3. Close the tube and incubate for 10 minutes at room temperature.</li><li>4. Briefly vortex the tube and then do a quick spin (less than 5000xg) to concentrate the liquid at the bottom.</li><li>5. Store the suspended plasmid at -20°C. The DNA is stable for at least one year from date of shipping when stored at -20°C.</li></ol>
<b>RefSeq:</b>	<a href="#">NM_001256822.1</a> , <a href="#">NP_001243751.1</a>
<b>RefSeq Size:</b>	1777 bp
<b>RefSeq ORF:</b>	996 bp
<b>Locus ID:</b>	5414
<b>UniProt ID:</b>	<a href="#">O43236</a>
<b>Cytogenetics:</b>	17q22
<b>Gene Summary:</b>	This gene is a member of the septin family of nucleotide binding proteins, originally described in yeast as cell division cycle regulatory proteins. Septins are highly conserved in yeast, Drosophila, and mouse, and appear to regulate cytoskeletal organization. Disruption of septin function disturbs cytokinesis and results in large multinucleate or polyploid cells. This gene is highly expressed in brain and heart. Alternatively spliced transcript variants encoding different isoforms have been described for this gene. One of the isoforms (known as ARTS) is distinct; it is localized to the mitochondria, and has a role in apoptosis and cancer. [provided by RefSeq, Nov 2010]