

Product datasheet for **RG232494**

EXTL2 (NM_001261440) Human Tagged ORF Clone

Product data:

Product Type:	Expression Plasmids
Product Name:	EXTL2 (NM_001261440) Human Tagged ORF Clone
Tag:	TurboGFP
Symbol:	EXTL2
Synonyms:	EXTR2
Mammalian Cell Selection:	Neomycin
Vector:	pCMV6-AC-GFP (PS100010)
E. coli Selection:	Ampicillin (100 ug/mL)
ORF Nucleotide Sequence:	>RG232494 representing NM_001261440 Red=Cloning site Blue=ORF Green=Tags(s)

TTTTGTAATACGACTCACTATAGGGCGGCCGGAATTCGTCGACTGGATCCGGTACCGAGGAGATCTGCC
GCC**CGATCGCC**

ATGAGGTGTTGCCACATCTGCAAACCTCCTGGGAGAGTAATGGGGATTTCGAGTGCCTCGATTATCTTTGG
TGGTCATCCTCGTATTACTGGTAGCTGGTCTTTGACTGCCTTACTCCCAGTGTTAAAGAAGACAA
GATGCTCATGTTGCGTAGGGAAATAAAATCCCAGGGCAAGTCCACCATGGACTCCTTTACTCTCATAATG
CAGACGTACAACAGAACAGATCTCTTATTGAAACTTTTAAATCATTATCAGGCTGTACCAAATCTGCACA
AAGTGATTGTGGTATGGAACAATATTGGAGAGAAGGCACCAGATGAATTATGGAATTCTCTAGGGCCCCA
CCCTATCCCTGTGATCTTCAAACAACAGACAGCAAACAGGATGAGAAATCGACTCCAGGTCTTTCCTGAA
CTGGAAACCAATGTGTTGATGGTAGATGATGACACACTCATCAGCACCCAGACCTGTTTTTGGCTTCT
CAGTTTGGCAGCAATTCCTGATCAAAATGTAGGATTTGTTTCTAGAAAGCACGTCTCTACTTTCATCAGG
TATCTACAGTTATGGAAGTTTTGAAATGCAAGCACCAGGGTCTGGAAATGGTGACCAGTACTCTATGGTG
CTGATTGGAGCCTCATTCTTCAATAGCAAATATCTTGAATTATTTTCAGAGGCAACCTGCAGCTGCCATG
CTTTGATAGATGATACTCAAACCTGTGATGATATTGCCATGAATTTTATCATTGCCAAGCATATTGGCAA
GACTTCAGGGATATTTGTGAAGCCTGTAACATGGACAATTTGGAAAAAGAAACCAACAGTGGCTATTCT
GGAATGTGGCATCGAGCTGAGCACGCTCTGCAGAGGTCTTATTGTATAAATAAGCTTGTTAATATCTATG
ATAGCATGCCCTTAAGATACTCCAACATTATGATTTCCAGTTTGGTTTTCCATATGCCAACTACAAAAG
AAAAATA

ACGCGTACGCGGCCGCTCGAG - GFP Tag - GTTTAA



[View online »](#)

Protein Sequence: >RG232494 representing NM_001261440
Red=Cloning site Green=Tags(s)

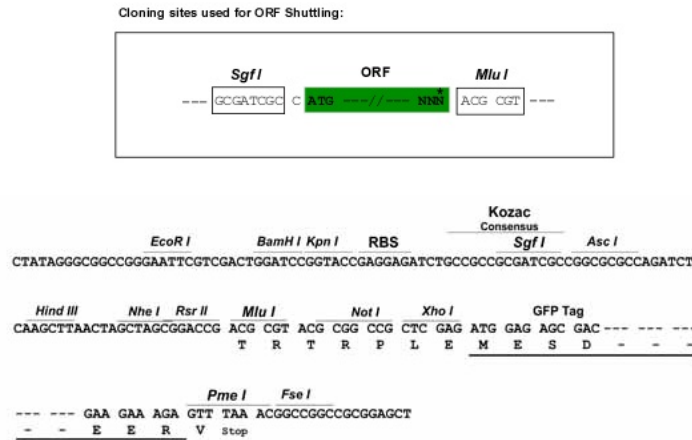
MRCCHICKLPGRVMGIRVLRSLVVLVLLVAGALTALLPSVKEDKMLMLRREIKSQGKSTMSFTLIM
 QTYNRTDLLLKLNLNHYQAVPNLHKVIVVWNNIGEKAPDELWNSLGPHPIPVIKQQTANRMRNLQVFP
 LETNVLVDDDTLSTPDLVFAFSVWQQFPDQIVGFVPRKHVSTSSGIYSYGSFEMQAPGSGNGDQYSMV
 LIGASFFNSKYLELFQRQPAAVHALIDDTQNCDDIAMNFIIAKHIGKTSGIFVKPVNMDNLEKETNSGYS
 GMWHRAEHALQRSYCINKLVNIYDSMPLRYSNIMISQFGFPYANYKRKI

TRTRPLE - GFP Tag - V

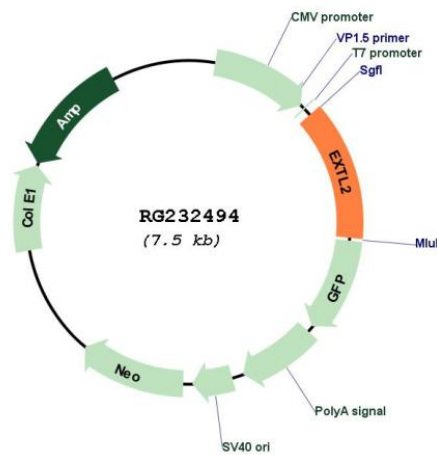
Restriction Sites:

Sgfl-MluI

Cloning Scheme:



Plasmid Map:



ACCN: NM_001261440

ORF Size: 987 bp

OTI Disclaimer:	The molecular sequence of this clone aligns with the gene accession number as a point of reference only. However, individual transcript sequences of the same gene can differ through naturally occurring variations (e.g. polymorphisms), each with its own valid existence. This clone is substantially in agreement with the reference, but a complete review of all prevailing variants is recommended prior to use. More info
OTI Annotation:	This clone was engineered to express the complete ORF with an expression tag. Expression varies depending on the nature of the gene.
Components:	The ORF clone is ion-exchange column purified and shipped in a 2D barcoded Matrix tube containing 10ug of transfection-ready, dried plasmid DNA (reconstitute with 100 ul of water).
Reconstitution Method:	<ol style="list-style-type: none">1. Centrifuge at 5,000xg for 5min.2. Carefully open the tube and add 100ul of sterile water to dissolve the DNA.3. Close the tube and incubate for 10 minutes at room temperature.4. Briefly vortex the tube and then do a quick spin (less than 5000xg) to concentrate the liquid at the bottom.5. Store the suspended plasmid at -20°C. The DNA is stable for at least one year from date of shipping when stored at -20°C.
RefSeq:	NM_001261440.1 , NP_001248369.1
RefSeq Size:	3178 bp
RefSeq ORF:	990 bp
Locus ID:	2135
Cytogenetics:	1p21.2
Protein Families:	Transmembrane
Protein Pathways:	Heparan sulfate biosynthesis
Gene Summary:	Glycosyltransferase required for the biosynthesis of heparan-sulfate and responsible for the alternating addition of beta-1-4-linked glucuronic acid (GlcA) and alpha-1-4-linked N-acetylglucosamine (GlcNAc) units to nascent heparan sulfate chains.[UniProtKB/Swiss-Prot Function]