

## Product datasheet for **RG232457**

### CA6 (NM\_001270500) Human Tagged ORF Clone

#### Product data:

|                           |  |
|---------------------------|--|
| Product Type:             | Expression Plasmids  |
| Product Name:             | CA6 (NM_001270500) Human Tagged ORF Clone                                      |
| Tag:                      | TurboGFP   |
| Symbol:                   | CA6  |
| Synonyms:                 | CA-VI; GUSTIN  |
| Mammalian Cell Selection: | Neomycin   |
| Vector:                   | pCMV6-AC-GFP (PS100010)  |
| E. coli Selection:        | Ampicillin (100 ug/mL)   |
| ORF Nucleotide Sequence:  | >RG232457 representing NM_001270500<br>Red=Cloning site Blue=ORF Green=Tags(s) |

TTTTGTAATACGACTCACTATAGGGCGGCCGGAATTCGTCGACTGGATCCGGTACCGAGGAGATCTGCC  
GCC**CGATCGCC**

ATGAGGGCCCTGGTGCTTCTGCTGTCCCTGTTCTGCTGGGTGGCCAGGCCAGCATGTGTCTGACTGGA  
CCTACTCAGAAGGGGCACTGGACGAAGCGCACTGGCCACAGCACTACCCCGCTGTGGGGCCAGAGACA  
GTCGCCTATCAACCTACAGAGGACGAAGGTGCGGTACAACCCCTCCTGAAGGGGCTCAATATGACAGGC  
TATGAGACCCAGGCAGGGGAGTCCCATGGTCAACAATGGCCACACAGTGCAGATCAGCCTGCCCTCCA  
CCATGCGCATGACAGTGGCTGACGGCACTGTATACATAGCCAGCAGATGCACTTTCAGTGGGGAGGTGC  
GTCTCGGAGATCAGCGCTCTGAGCACACCGTGGACGGGATCAGACATGTGATCGAGATTCACATTGTT  
CACTACAATTCTAAATACAAGAGCTATGATATAGCCCAAGATGCCCGGATGGTTTGCTGTACTGGCAG  
CCTTCGTTGAGGTGAAGAATTACCCTGAAAACACTTATTACAGCAACTTCATTTCTCATCTGGCCAACAT  
CAAGTACCAGGACAAAGAACAACCCCTGACTGGCCTTGACGTTTCAGGACATGCTGCCAGGAACCTCCAG  
CACTACTACACCTACCATGGCTCACTCACCACGCTCCCTGCACTGAGAACGTCCTGGTTTGTGCTGG  
CAGATTTGTCAAGCTCTCCAGGACACAGGTTTGAAGCTGGAGAATTCCTTACTGGATCACCGCAACA  
GACCATCCACAACGATTACCGCAGGACCCAGCCCTGAACCACAGAGTGGTGAATCCAACCTCCCGAAT  
CAGGGCAAGGGCCACGGGGGCATCGTGGGAGAAGCCAAAATCCAAGAGTACAGCCACCTCAACACGCC  
ACCCCTGGCTCTGGGCAGCTTAGAAGCC

**ACGCGT**ACGCGGCCGCTCGAG - GFP Tag - GTTTAA



[View online »](#)

**Protein Sequence:** >RG232457 representing NM\_001270500  
 Red=Cloning site Green=Tags(s)

MRALVLLLSLFLGGQAQHVSDWTYSEGALDEAHWPQHYPACGGQRQSPINLQRTKVRYNPSLKGLNMTG  
 YETQAGEFPMVNNGHTVQISLPSTMRMTVADGTVYIAQQMHFWGGASSEISGSEHTVDGIRHVIEIHIV  
 HYNKYKSYDIAQDAPDGLAVLAFAFVEVKNYPENTYYSNFISHLANIKYPGQRTTLTGLDVQDMLPRNLQ  
 HYYTYHGSLTTPPCTENVHWFVLADFVKLSRTQVWKLNSLLDHRNKTIHNDYRRTQPLNHRVVESNFPN  
 QKGKGGHGRSQNPRVQPTSTRHPLALGSLEA

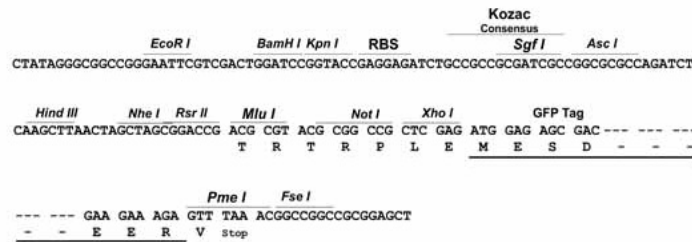
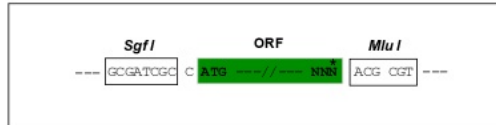
TRTRPLE - GFP Tag - V

**Restriction Sites:**

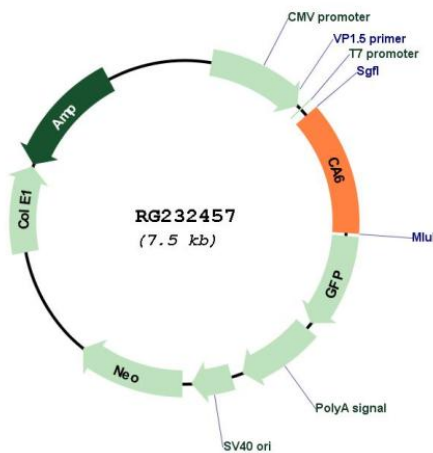
SgfI-MluI

**Cloning Scheme:**

Cloning sites used for ORF Shuttling:



**Plasmid Map:**



**ACCN:** NM\_001270500

**ORF Size:** 939 bp

|                               |   |
|-------------------------------|---|
| <b>OTI Disclaimer:</b>        | The molecular sequence of this clone aligns with the gene accession number as a point of reference only. However, individual transcript sequences of the same gene can differ through naturally occurring variations (e.g. polymorphisms), each with its own valid existence. This clone is substantially in agreement with the reference, but a complete review of all prevailing variants is recommended prior to use. <a href="#">More info</a>  |
| <b>OTI Annotation:</b>        | This clone was engineered to express the complete ORF with an expression tag. Expression varies depending on the nature of the gene.  |
| <b>Components:</b>            | The ORF clone is ion-exchange column purified and shipped in a 2D barcoded Matrix tube containing 10ug of transfection-ready, dried plasmid DNA (reconstitute with 100 ul of water).  |
| <b>Reconstitution Method:</b> | <ol style="list-style-type: none"><li>1. Centrifuge at 5,000xg for 5min.</li><li>2. Carefully open the tube and add 100ul of sterile water to dissolve the DNA.</li><li>3. Close the tube and incubate for 10 minutes at room temperature.</li><li>4. Briefly vortex the tube and then do a quick spin (less than 5000xg) to concentrate the liquid at the bottom.</li><li>5. Store the suspended plasmid at -20°C. The DNA is stable for at least one year from date of shipping when stored at -20°C.</li></ol> |
| <b>RefSeq:</b>                | <a href="#">NM_001270500.2</a>  |
| <b>RefSeq Size:</b>           | 995 bp  |
| <b>RefSeq ORF:</b>            | 942 bp  |
| <b>Locus ID:</b>              | 765   |
| <b>UniProt ID:</b>            | <a href="#">P23280</a>  |
| <b>Cytogenetics:</b>          | 1p36.23   |
| <b>Protein Families:</b>      | Druggable Genome, Secreted Protein  |
| <b>Protein Pathways:</b>      | Nitrogen metabolism   |
| <b>Gene Summary:</b>          | The protein encoded by this gene is one of several isozymes of carbonic anhydrase. This protein is found only in salivary glands and saliva and protein may play a role in the reversible hydration of carbon dioxide though its function in saliva is unknown. [provided by RefSeq, Jul 2008]  |