

Product datasheet for **RG232406**

GSG1 (NM_001206843) Human Tagged ORF Clone

Product data:

Product Type:	Expression Plasmids
Product Name:	GSG1 (NM_001206843) Human Tagged ORF Clone
Tag:	TurboGFP
Symbol:	GSG1
Mammalian Cell Selection:	Neomycin
Vector:	pCMV6-AC-GFP (PS100010)
E. coli Selection:	Ampicillin (100 ug/mL)
ORF Nucleotide Sequence:	>RG232406 representing NM_001206843 Red=Cloning site Blue=ORF Green=Tags(s)

TTTTGTAATACGACTCACTATAGGGCGGCCGGAATTCGTCGACTGGATCCGGTACCGAGGAGATCTGCC
GCC**CGATCGCC**

ATGGCCAAGATGGAGCTCTCGAAGGCCTTCTCTGGCCAGCGGACACTCCTATCTGCCATCCTCAGCATGC
TATCACTCAGCTTCTCCACAACATCCCTGCTCAGCAACTACTGGTTTGTGGGCACACAGAAGGTGCCCAA
GCCCCTGTGCGAGAAAGGTCTGGCAGCCAAGTGCTTTGACATGCCAGTGTCCCTGGATGGAGATACCAAC
ACATCCACCCAGGAGGTGGTACAATACTGGGAGACTGGGGATGACCGTTCTCCTCCGGAGCTTCC
GGAGTGGCATGTGGTATCCTGTGAGGAACTGTGGAAGAACCAGCACTGCTCCATCCCCAGTCCCTGGAA
ACAATTTAGACCCTTCGGTCCAGTGGTACAGCGGCAGCAAAAGGGGAGAGGTGCCGAAGTTTCATTGAA
CTTACACCACCAGCCAAGAGAGGTCTCCTGGGGATGGTGGCCACATGATGTATTACAAGTCTTCCAAG
CGACTGTCAACTTGGGTCCAGAAGACTGGAGACCACATGTTTGAATTATGGCTGGGCCTTCTACATGGC
CTGGCTCTCCTTACCTGCTGCATGGCGTGGCTGTCACCACCTTCAACACGTACACCAGGATGGTGTG
GAGTTCAAGTGAAGCATAGTAAGAGCTTCAAGGAAAACCGAACTGCCTACCACATCACCATCAGTGT
TCCCTCGGCGGCTGTCAAGTGCAGCCCCACCGTGGTCTTTGACCAGTACCACCAGTATCATAATCA
GCCCATCCACTCTGTCTCTGAGGGAGTCGACTTCTACTCCGAGCTGCGGAACAAGGGATTTCAAAGAGGG
GCCAGCCAGGAGCTGAAAGAAGCAGTTAGGTCATCTGTAGAGGAAGAGCAGTGT

ACGCGTACGCGGCCGCTCGAG - GFP Tag - GTTTAA



[View online »](#)

Protein Sequence: >RG232406 representing NM_001206843
Red=Cloning site Green=Tags(s)

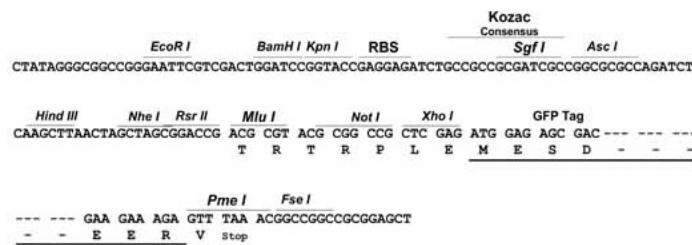
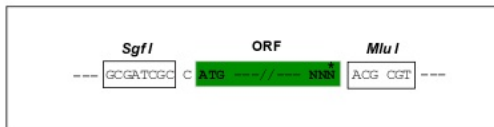
MAKMELSKAFSGQRTLLSAILSMLSLSFSTTLLSNYWFVGTQKVPKPLCEKGLAAKCFDMPVSLDGDNT
 TSTQEVVQYNWETGDDRF SFRSFRSGMWLSC EETVEEPALLHPQSWKQFRALRSSGTA AAKGERCRSFIE
 LTPPAKRGLLGMVAHMMYSQVFQATVNLGPEDWRPHVWNYGWAFYMAWLSFTCCMASAVTTFNTYTRMVL
 EFKCKHSKSFKENPNCLPHHHQCFPRLLSSAAPTVGPLTSYHQYHNQPIHSVSEGVDFYSELRNKGFQRG
 ASQELKEAVRSSVEEEQC

TRTRPLE - GFP Tag - V

Restriction Sites: SgfI-MluI

Cloning Scheme:

Cloning sites used for ORF Shutting:



Plasmid Map:



ACCN: NM_001206843

ORF Size: 894 bp

OTI Disclaimer:	The molecular sequence of this clone aligns with the gene accession number as a point of reference only. However, individual transcript sequences of the same gene can differ through naturally occurring variations (e.g. polymorphisms), each with its own valid existence. This clone is substantially in agreement with the reference, but a complete review of all prevailing variants is recommended prior to use. More info
OTI Annotation:	This clone was engineered to express the complete ORF with an expression tag. Expression varies depending on the nature of the gene.
Components:	The ORF clone is ion-exchange column purified and shipped in a 2D barcoded Matrix tube containing 10ug of transfection-ready, dried plasmid DNA (reconstitute with 100 ul of water).
Reconstitution Method:	<ol style="list-style-type: none"> 1. Centrifuge at 5,000xg for 5min. 2. Carefully open the tube and add 100ul of sterile water to dissolve the DNA. 3. Close the tube and incubate for 10 minutes at room temperature. 4. Briefly vortex the tube and then do a quick spin (less than 5000xg) to concentrate the liquid at the bottom. 5. Store the suspended plasmid at -20°C. The DNA is stable for at least one year from date of shipping when stored at -20°C.
RefSeq:	NM_001206843.3
RefSeq Size:	2460 bp
RefSeq ORF:	897 bp
Locus ID:	83445
UniProt ID:	Q2KHT4
Cytogenetics:	12p13.1
Protein Families:	Transmembrane
Gene Summary:	May cause the redistribution of PAPOLB from the cytosol to the endoplasmic reticulum. [UniProtKB/Swiss-Prot Function]