

Product datasheet for **RG232340**

KLF7 (NM_001270943) Human Tagged ORF Clone

Product data:

Product Type:	Expression Plasmids
Product Name:	KLF7 (NM_001270943) Human Tagged ORF Clone
Tag:	TurboGFP
Symbol:	KLF7
Synonyms:	UKLF
Mammalian Cell Selection:	Neomycin
Vector:	pCMV6-AC-GFP (PS100010)
E. coli Selection:	Ampicillin (100 ug/mL)
ORF Nucleotide Sequence:	>RG232340 representing NM_001270943 Red=Cloning site Blue=ORF Green=Tags(s)

TTTTGTAATACGACTCACTATAGGGCGGCCGGAATTCGTCGACTGGATCCGGTACCGAGGAGATCTGCC
GCC**CGATCGCC**

ATGACATGCCTTGAATTGGAACGCTACCTACAGACGGAGCCCCGGAGGATCTCAGAGACCTTTGGTGAGG
ACTTGACTGTTTCCTCCACGCTTCCCCCTCCCCGTCATTGAGGAAAGCTTCCGTCGCTTAGACCCCT
GCTGCTCCCCGTGGAAGCGGCCATCTGTGAGAAGAGCTCGGCAGTGGACATCTTGCTCTCTCGGGACAAG
TTGCTATCTGAGACCTGCCTCAGCCTCCAGCCGCCAGCTTTCTCTAGACAGCTACACAGCCGTAACC
AGGCCAGCTCAACGCAGTGACCTCATTAAACGCCCCATCGTCCCCTGAGCTCAGCCGCATCTGGTCAA
AACCTCACAACTCTCTGCGGTGGATGGCACGGTGACGTTGAAACTGGTGGCCAAGAAGGCTGCTCTC
AGCTCCGTAAAGGTGGGAGGGTTCGCAACAGCTGCAGCAGCCGTGACGGCTGCGGGGCCGTTAAGAGTG
GACAGAGCGACAGTGACCAAGGAGGGCTAGGGGCTGAAGCATGTCCCGAAAAACAAGAAGAGGGTTACCG
CTGTGAGTTTAAAGGGTCCCGAAAGTTTATACAAAAGCTCCCACTTAAAGGCCACCAGAGGACTCAC
ACAGGTGAGAAGCCTTATAAGTGCTCATGGGAGGGATGTGAGTGGCGTTTTGCACGAAGCGATGAGCTCA
CGAGGCACTACAGGAAACACACAGGTGCAAAGCCCTTCAAATGCAACCACTGCGACAGGTGTTTTCCAG
GTCTGACCATCTTGCCCTCCACATGAAGAGACATATC

ACGCGTACGCGGCCGCTCGAG - GFP Tag - GTTTAA



[View online »](#)

Protein Sequence: >RG232340 representing NM_001270943
 Red=Cloning site Green=Tags(s)

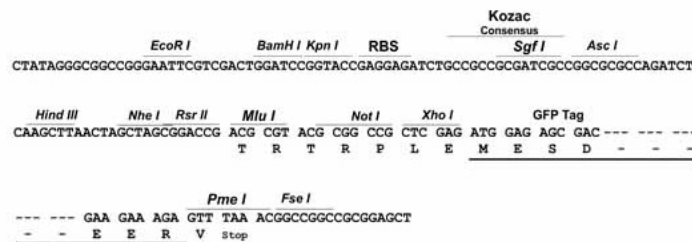
MTCLELERYLQTEPRRISETFGEDLDCFLHASPPPCIEESFRRLDPLLLPVEAAICEKSSAVDILLSRDK
 LLSETCLSLQPASSSLDSYAVNQAQLNAVTSSTPPSSPEL SRHLVKTSQTL SAVDGTVTLKLVAKKAAL
 SSVKVGAVATAAAAVTAAGAVKSGQSDSDQGLGAEACPENKRRVHRCQFNGCRKYVTKSSHLKAHQRT
 TGEKPYKCSWEGCEWRFARSDEL TRHYRKHTGAKPFKCNHCDCRF SRSDHLALHMKRHI

TRTRPLE - GFP Tag - V

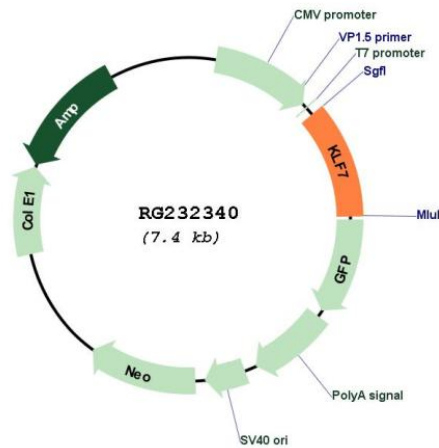
Restriction Sites: SgfI-MluI

Cloning Scheme:

Cloning sites used for ORF Shutting:



Plasmid Map:



ACCN: NM_001270943

ORF Size: 807 bp

OTI Disclaimer:	The molecular sequence of this clone aligns with the gene accession number as a point of reference only. However, individual transcript sequences of the same gene can differ through naturally occurring variations (e.g. polymorphisms), each with its own valid existence. This clone is substantially in agreement with the reference, but a complete review of all prevailing variants is recommended prior to use. More info
OTI Annotation:	This clone was engineered to express the complete ORF with an expression tag. Expression varies depending on the nature of the gene.
Components:	The ORF clone is ion-exchange column purified and shipped in a 2D barcoded Matrix tube containing 10ug of transfection-ready, dried plasmid DNA (reconstitute with 100 ul of water).
Reconstitution Method:	<ol style="list-style-type: none">1. Centrifuge at 5,000xg for 5min.2. Carefully open the tube and add 100ul of sterile water to dissolve the DNA.3. Close the tube and incubate for 10 minutes at room temperature.4. Briefly vortex the tube and then do a quick spin (less than 5000xg) to concentrate the liquid at the bottom.5. Store the suspended plasmid at -20°C. The DNA is stable for at least one year from date of shipping when stored at -20°C.
RefSeq:	NM_001270943.1 , NP_001257872.1
RefSeq Size:	7990 bp
RefSeq ORF:	810 bp
Locus ID:	8609
UniProt ID:	O75840
Cytogenetics:	2q33.3
Protein Families:	Transcription Factors
Gene Summary:	The protein encoded by this gene is a member of the Kruppel-like transcriptional regulator family. Members in this family regulate cell proliferation, differentiation and survival and contain three C2H2 zinc fingers at the C-terminus that mediate binding to GC-rich sites. This protein may contribute to the progression of type 2 diabetes by inhibiting insulin expression and secretion in pancreatic beta-cells and by deregulating adipocytokine secretion in adipocytes. A pseudogene of this gene is located on the long arm of chromosome 3. Alternative splicing results in multiple transcript variants. [provided by RefSeq, Aug 2012]