

Product datasheet for **RG232320**

MBD4 (NM_001276273) Human Tagged ORF Clone

Product data:

Product Type:	Expression Plasmids
Product Name:	MBD4 (NM_001276273) Human Tagged ORF Clone
Tag:	TurboGFP
Symbol:	MBD4
Synonyms:	MED1
Mammalian Cell Selection:	Neomycin
Vector:	pCMV6-AC-GFP (PS100010)
E. coli Selection:	Ampicillin (100 ug/mL)
ORF Nucleotide Sequence:	>RG232320 representing NM_001276273 Red=Cloning site Blue=ORF Green=Tags(s)

TTTTGTAATACGACTCACTATAGGGCGGCCGGAATTCGTCGACTGGATCCGGTACCGAGGAGATCTGCC
GCC**CGATCGCC**

ATGGGCACGACTGGGCTGGAGAGTCTGAGTCTGGGGACCGGGAGCTGCCCCACCGTCACCTCTAGTG
AGCGCCTAGTCCCAGACCCGCGAATGACCTCCGCAAAGAAGATGTTGCTATGGAATTGAAAGAGTGGG
AGAAGATGAGGAACAAATGATGATAAAAAGAAGCAGTGAATGTAATCCCTTGCTACAAGAACCCATCGCT
TCTGCTCAGTTTGGTGTACTGCAGGAACAGAATGCCAAGATACCATCCCACGAACACAGATAGAAAGAA
GGAAAACAAGCCTGTATTTTTCCAGCAAATATAACAAAGAAGCTTTAGCCCCCAGCAGTAAAGCCTT
TAAGAAATGGACACCTCCTCGGTACCTTTTAATCTCGTTCAAGAAACACTTTTTTCATGATCCATGGAA
CTTCTCATCGCTACTATATTTCTCAATCGACCTCAGGCAAAATGGCAATACCTGTGCTTTGGAAGTTTC
TGGAGAAGTATCCTTCAGCTGAGGTAGCAAGAACCGCAGACTGGAGAGATGTGTCAGAACTCTTAAACC
TCTTGGTCTCTACGATCTTCGGGCAAAAACCATTTGTCAAGTTCTCAGATGAATACCTGACAAAGCAGTGG
AAGTATCCAATTGAGCTTCATGGGATTGGTAAATATGGCAACGACTCTTACCGAATTTTTGTGTCAATG
AGTGAAGCAGGTGCACCCTGAAGACCACAAATTAATAAATATCATGACTGGCTTTGGGAAAATCATGA
AAAATTAAGTCTATCT

ACGCGTACGCGGCCGCTCGAG - GFP Tag - GTTTAA



[View online »](#)

Protein Sequence: >RG232320 representing NM_001276273
Red=Cloning site Green=Tags(s)

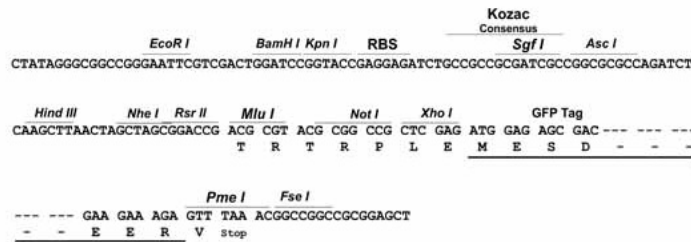
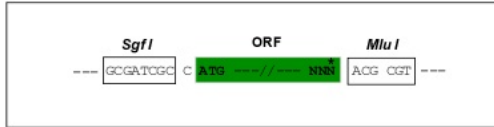
MGTTGLESLSLGD RGAAPT V TSSERL VDP PNDLRKEDVAMELERVGEDEEQMMIKRSSECNPLLQEP
 IA SAQFGATAGTECQDTIPRTQIERRKTSLYFSSKYNKEALSPRRKAFKKWTPRSPFNLVQETLFHDPWK
 LLIATIFLNRSTSGKMAIPVLWKFLEKYP
 SAEVARTADWRDVSSELLKPLGLYDLRAKTI
 VKF SDEYLTQKW KYPIELHGIGKYGND
 SYRIFCVNEWKQVHPEDHKL NKYHDWLWENHEKLSLS

TRTRPLE - GFP Tag - V

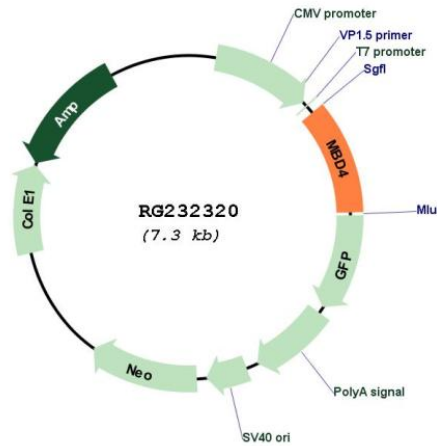
Restriction Sites: SgfI-MluI

Cloning Scheme:

Cloning sites used for ORF Shutting:



Plasmid Map:



ACCN: NM_001276273

ORF Size: 786 bp

OTI Disclaimer:	The molecular sequence of this clone aligns with the gene accession number as a point of reference only. However, individual transcript sequences of the same gene can differ through naturally occurring variations (e.g. polymorphisms), each with its own valid existence. This clone is substantially in agreement with the reference, but a complete review of all prevailing variants is recommended prior to use. More info
OTI Annotation:	This clone was engineered to express the complete ORF with an expression tag. Expression varies depending on the nature of the gene.
Components:	The ORF clone is ion-exchange column purified and shipped in a 2D barcoded Matrix tube containing 10ug of transfection-ready, dried plasmid DNA (reconstitute with 100 ul of water).
Reconstitution Method:	<ol style="list-style-type: none">1. Centrifuge at 5,000xg for 5min.2. Carefully open the tube and add 100ul of sterile water to dissolve the DNA.3. Close the tube and incubate for 10 minutes at room temperature.4. Briefly vortex the tube and then do a quick spin (less than 5000xg) to concentrate the liquid at the bottom.5. Store the suspended plasmid at -20°C. The DNA is stable for at least one year from date of shipping when stored at -20°C.
RefSeq:	NM_001276273.1 , NP_001263202.1
RefSeq Size:	1706 bp
RefSeq ORF:	789 bp
Locus ID:	8930
UniProt ID:	O95243
Cytogenetics:	3q21.3
Protein Families:	Druggable Genome
Protein Pathways:	Base excision repair
Gene Summary:	The protein encoded by this gene is a member of a family of nuclear proteins related by the presence of a methyl-CpG binding domain (MBD). These proteins are capable of binding specifically to methylated DNA, and some members can also repress transcription from methylated gene promoters. This protein contains an MBD domain at the N-terminus that functions both in binding to methylated DNA and in protein interactions and a C-terminal mismatch-specific glycosylase domain that is involved in DNA repair. Alternatively spliced transcript variants encoding multiple isoforms have been observed for this gene. [provided by RefSeq, Jan 2013]