

Product datasheet for **RG232299**

Kallikrein 15 (KLK15) (NM_001277081) Human Tagged ORF Clone

Product data:

Product Type:	Expression Plasmids
Product Name:	Kallikrein 15 (KLK15) (NM_001277081) Human Tagged ORF Clone
Tag:	TurboGFP
Symbol:	KLK15
Synonyms:	ACO; HSRNASPH
Mammalian Cell Selection:	Neomycin
Vector:	pCMV6-AC-GFP (PS100010)
E. coli Selection:	Ampicillin (100 ug/mL)
ORF Nucleotide Sequence:	>RG232299 representing NM_001277081 Red=Cloning site Blue=ORF Green=Tags(s)

TTTTGTAATACGACTCACTATAGGGCGGCCGGAATTCGTCGACTGGATCCGGTACCGAGGAGATCTGCC
GCC**CGATCGCC**

ATGTGGCTTCTCCTCACTCTCTCCTTCTGCTGGCATCCACAGCCAGGATGGTGACAAGTTGCTGGAAG
GTGACGAGTGTGCACCCCACTCCCAGCCATGGCAAGTGGCTCTCTACGAGCGTGGACGCTTTAACTGTGG
CGCTTCCCTCATCTCCCCACACTGGGTGCTGTCTGCGGCCCACTGCCAAAGCCGCTTCATGAGAGTGC
CTGGGAGAGCACAACTGCGCAAGCGCGATGGCCAGAGCAACTACGGACCACGTCTCGGGTCATTCCAC
ACCCGCGCTACGAAGCGCGCAGCCACCGCAACGACATCATGTTGCTGCGCCTAGTCCAGCCCGCACGCCT
GAACCCCAAGGTGCGCCCGCGGTGCTACCCACGCGTTGCCCCACCCGGGGAGGCCTGTGTGGTGTCT
GGCTGGGGCCTGGTGTCCACAACGAGCCTGGGACCGCTGGGAGCCCCGGTCAAGTGAAGTCTCCAG
ATACGTTGCATTGTGCCAACATCAGATTATCTCGGACACATCTTGTGACAAGAGCTACCCAGGGCGCCT
GACAAACCAATGGTGTGTGCAGGCGGGAGGGCAGAGGCGCAGAATCCTGTGAGGGTGAAGTCTGGGGGA
CCCCTGGTCTGTGGGGCATCCTGCAGGGCATTGTGTCTGGGGTGAAGTCCCTTGTGACAACACCA
AGCCTGGTGTCTATACCAAAGTCTGCCACTACTGGAGTGGATCAGGAAACCATGAAGAGGAAC

AG**CGGACCG**ACGCGTACGCGGCCGCTCGAG - GFP Tag - GTTTAA



[View online »](#)

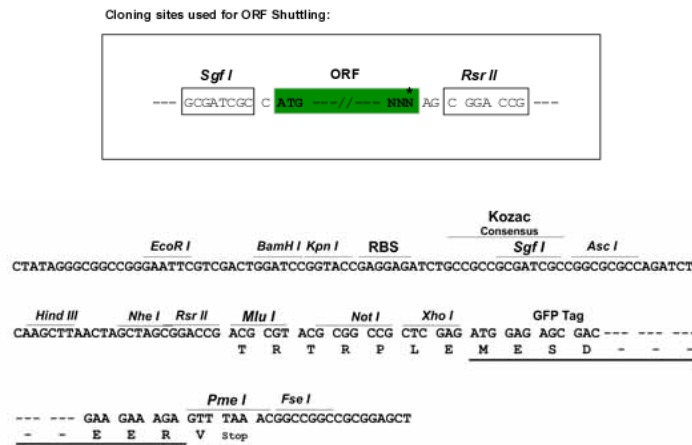
Protein Sequence: >RG232299 representing NM_001277081
 Red=Cloning site Green=Tags(s)

MWLLLTLSFLLASTAQDGDKLLLEGDECAPHSQPWQVALYERGRFNGCASLISPHWVLSAAHCQSRFMVR
 LGEHNLKRDGPEQLRTTSRVIPHPRYEARSHRNDIMLLRLVQPARLNPQVRPAVLPTRCPHPGEACVVS
 GWGLVSHNEPGTAGSPRSQVSLPDTLHCANISII SDTSCDKSYPGRLTNTMVCAGAEGRGAESCEGDSGG
 PLVCGGILQGI VSWGDVPCDNTTKPGVYTKVCHYLEWIRETMKRN

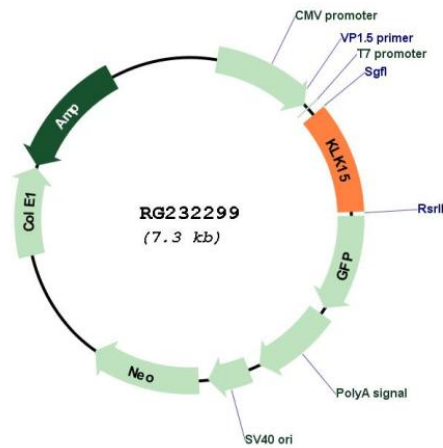
SGPTRRRLE - GFP Tag - V

Restriction Sites: SgfI-RsrII

Cloning Scheme:



Plasmid Map:



ACCN: NM_001277081

ORF Size: 765 bp

OTI Disclaimer:	The molecular sequence of this clone aligns with the gene accession number as a point of reference only. However, individual transcript sequences of the same gene can differ through naturally occurring variations (e.g. polymorphisms), each with its own valid existence. This clone is substantially in agreement with the reference, but a complete review of all prevailing variants is recommended prior to use. More info
OTI Annotation:	This clone was engineered to express the complete ORF with an expression tag. Expression varies depending on the nature of the gene.
Components:	The ORF clone is ion-exchange column purified and shipped in a 2D barcoded Matrix tube containing 10ug of transfection-ready, dried plasmid DNA (reconstitute with 100 ul of water).
Reconstitution Method:	<ol style="list-style-type: none">1. Centrifuge at 5,000xg for 5min.2. Carefully open the tube and add 100ul of sterile water to dissolve the DNA.3. Close the tube and incubate for 10 minutes at room temperature.4. Briefly vortex the tube and then do a quick spin (less than 5000xg) to concentrate the liquid at the bottom.5. Store the suspended plasmid at -20°C. The DNA is stable for at least one year from date of shipping when stored at -20°C.
RefSeq:	NM_001277081.1 , NP_001264010.1
RefSeq Size:	1322 bp
RefSeq ORF:	768 bp
Locus ID:	55554
UniProt ID:	Q9H2R5
Cytogenetics:	19q13.33
Protein Families:	Druggable Genome, Protease, Secreted Protein
Gene Summary:	Kallikreins are a subgroup of serine proteases having diverse physiological functions. Growing evidence suggests that many kallikreins are implicated in carcinogenesis and some have potential as novel cancer and other disease biomarkers. This gene is one of the fifteen kallikrein subfamily members located in a cluster on chromosome 19. In prostate cancer, this gene has increased expression, which indicates its possible use as a diagnostic or prognostic marker for prostate cancer. The gene contains multiple polyadenylation sites and alternative splicing results in multiple transcript variants encoding distinct isoforms. [provided by RefSeq, Jul 2008]