

## Product datasheet for **RG232167**

### **TMEM139 (NM\_001242775) Human Tagged ORF Clone**

#### Product data:

Product Type: Expression Plasmids  
 Product Name: TMEM139 (NM\_001242775) Human Tagged ORF Clone  
 Tag: TurboGFP  
 Symbol: TMEM139  
 Mammalian Cell Selection: Neomycin  
 Vector: pCMV6-AC-GFP (PS100010)  
 E. coli Selection: Ampicillin (100 ug/mL)  
 ORF Nucleotide Sequence: >RG232167 representing NM\_001242775  
 Red=Cloning site Blue=ORF Green=Tags(s)

TTTTGTAATACGACTCACTATAGGGCGGCCGGGAATTCGTCGACTGGATCCGGTACCGAGGAGATCTGCCGCC**CGATCGCC**

ATGGTGCCAATGCACTTACTGGGGAGACTGGAGAAGCCGCTTCTCCTCCTGTGCTGCGCCTCCTTCTTCTAC  
 TGGGGCTGGCTTTTGTGGGCATAAAGACGGACATCACCCCGTTGCTTATTTCTTCTCACATTGGGTGG  
 CTTCTTCTGTTTGCCTATCTCCTGGTCCGTTTCTGGAATGGGGGCTCCGGTCCCAGCTCCAATCAATG  
 CAGACTGAGAGCCAGGGCCCTCAGGCAATGCACGGGACAATGAAGCCTTTGAAGTGCCAGTCTATGAAG  
 AGGCCGTGGTGGGACTAGAATCCAGTCCCGCCCAAGAGTTGGACCAACCACCCCTACAGCACTGT  
 TGTGATACCCCAAGCACCTGAGGAGGAACAACCTAGCCATCCAGAGGGGTCCAGGAGAGCCAAACTGGAA  
 CAGAGGCGAATGGCCTCAGAGGGTCCATGGCCAGGAAGGAAGCCCTGGAAGAGCTCCAATCAACCTTC  
 GGCTTCGGGGACCACGGGCTGTGTCCACTGCTCCTGATCTGCAGAGCTTGGCGGCAGTCCCACATTAGA  
 GCCTCTGACTCCACCCCTGCCTATGATGTCTGCTTTGGTACCCTGATGATGATAGTGTTTTTTATGAG  
 GACAACTGGGCACCCCT

**ACGCGT**ACGCGGCCGCTCGAG - GFP Tag - GTTTAA

Protein Sequence: >RG232167 representing NM\_001242775  
 Red=Cloning site Green=Tags(s)

MVPMHLLGRLEKPLLLLCCASFLLGLALLGIKTDITPVAYFFLTLGGFFLFAYLLVRFLEWGLRSQLQSM  
 QTESPGPSGNARDNEAFVPEVYEEAVVGLSQCRPQELDQPPYSTVVIPPAPEEEEQPSHPEGSRRAKLE  
 QRRMASEGSMQEGSPGRAPINLRLRGPRAVSTAPDLQSLAAVPTLEPLTPPPAYDVCFGHPDDDSVFYE  
 DNWAPP

**TRTRPLE** - GFP Tag - V

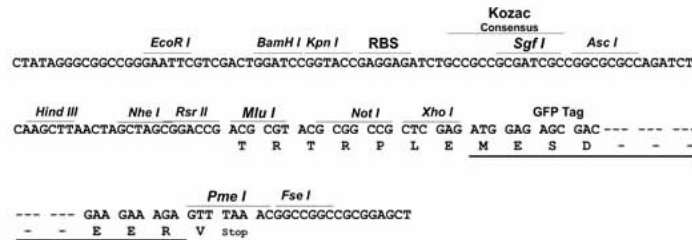
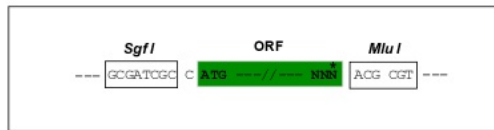


[View online »](#)

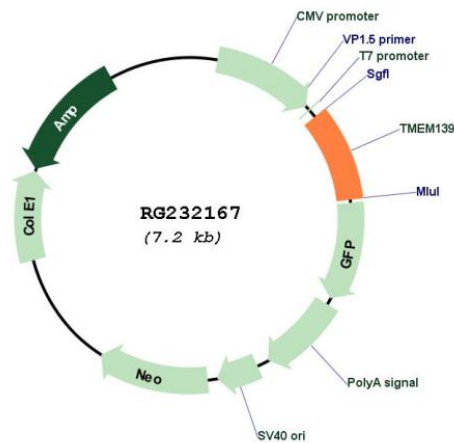
Restriction Sites: SgfI-MluI

Cloning Scheme:

Cloning sites used for ORF Shutting:



Plasmid Map:



ACCN: NM\_001242775

ORF Size: 648 bp

OTI Disclaimer: The molecular sequence of this clone aligns with the gene accession number as a point of reference only. However, individual transcript sequences of the same gene can differ through naturally occurring variations (e.g. polymorphisms), each with its own valid existence. This clone is substantially in agreement with the reference, but a complete review of all prevailing variants is recommended prior to use. [More info](#)

OTI Annotation: This clone was engineered to express the complete ORF with an expression tag. Expression varies depending on the nature of the gene.

<b>Components:</b>	The ORF clone is ion-exchange column purified and shipped in a 2D barcoded Matrix tube containing 10ug of transfection-ready, dried plasmid DNA (reconstitute with 100 ul of water).
<b>Reconstitution Method:</b>	<ol style="list-style-type: none"><li>1. Centrifuge at 5,000xg for 5min.</li><li>2. Carefully open the tube and add 100ul of sterile water to dissolve the DNA.</li><li>3. Close the tube and incubate for 10 minutes at room temperature.</li><li>4. Briefly vortex the tube and then do a quick spin (less than 5000xg) to concentrate the liquid at the bottom.</li><li>5. Store the suspended plasmid at -20°C. The DNA is stable for at least one year from date of shipping when stored at -20°C.</li></ol>
<b>RefSeq:</b>	<u>NM_001242775.2, NP_001229704.1</u>
<b>RefSeq Size:</b>	2102 bp
<b>RefSeq ORF:</b>	651 bp
<b>Locus ID:</b>	135932
<b>UniProt ID:</b>	<u>Q8IV31</u>
<b>Cytogenetics:</b>	7q34
<b>Protein Families:</b>	Transmembrane
<b>Gene Summary:</b>	May be involved in cellular trafficking of proteins such as SLC4A1.[UniProtKB/Swiss-Prot Function]