

Product datasheet for **RG232166**

TMEM139 (NM_001242774) Human Tagged ORF Clone

Product data:

Product Type: Expression Plasmids
Product Name: TMEM139 (NM_001242774) Human Tagged ORF Clone
Tag: TurboGFP
Symbol: TMEM139
Mammalian Cell Selection: Neomycin
Vector: pCMV6-AC-GFP (PS100010)
E. coli Selection: Ampicillin (100 ug/mL)
ORF Nucleotide Sequence: >RG232166 representing NM_001242774
 Red=Cloning site Blue=ORF Green=Tags(s)

TTTTGTAATACGACTCACTATAGGGCGGCCGGAATTCGTCGACTGGATCCGGTACCGAGGAGATCTGCC
 GCC**CGATCGCC**

ATGGTGCCAATGCACTTACTGGGGAGACTGGAGAAGCCGCTTCTCCTCCTGTGCTGCGCCTCCTTCTAC
 TGGGGCTGGCTTTGCTGGGCATAAAGACGGACATCACCCCGTTGCTATTTCTTTCTCACATTGGGTGG
 CTTCTTCTGTTTGCCTATCTCCTGGTCCGTTTCTGGAATGGGGCTTCGGTCCCAGCTCCAATCAATG
 CAGACTGAGAGCCAGGGCCCTCAGGCAATGCACGGGACAATGAAGCCTTTGAAGTGCCAGTCTATGAAG
 AGGCCGTGGTGGACTAGAATCCAGTCCCGCCCAAGAGTTGGACCAACCACCCCTACAGCACTGT
 TGTGATACCCCGACACCTGAGGAGGAACAACCTAGCCATCCAGAGGGGTCCAGGAGGCCAAACTGGAA
 CAGAGGCGAATGGCCTCAGAGGGTCCATGGCCAGGAAGGAAGCCCTGGAAGAGCTCCAATCAACCTTC
 GGCTTCGGGGACCACGGGCTGTGTCCACTGCTCCTGATCTGCAGAGCTTGGCGGCAGTCCCACATTAGA
 GCCTCTGACTCCACCCCTGCCTATGATGTCTGCTTTGGTACCCTGATGATGATAGTGTTTTTTATGAG
 GACAACTGGGCACCCCT

ACGCGTACGCGGCCGCTCGAG - GFP Tag - GTTTAA

Protein Sequence: >RG232166 representing NM_001242774
 Red=Cloning site Green=Tags(s)

MVPMHLLGRLEKPLLLLCCASFLLGLALLGIKTDITPVAYFFLTLGGFFLFAYLLVRFLEWGLRSQLQSM
 QTESPGPSGNARDNEAFVPEVYEEAVVGLESQCRPQELDQPPYSTVVIPPAPEEEEQPSHPEGSRRAKLE
 QRRMASEGSMQEGSPGRAPINLRLRGPRAVSTAPDLQSLAAVPTLEPLTPPPAYDVCFGHPDDDSVFYE
 DNWAPP

TRTRPLE - GFP Tag - V

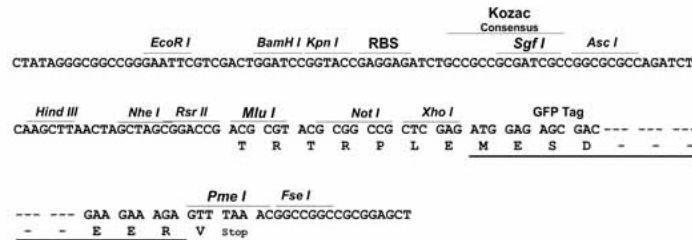
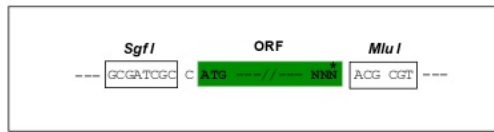


[View online »](#)

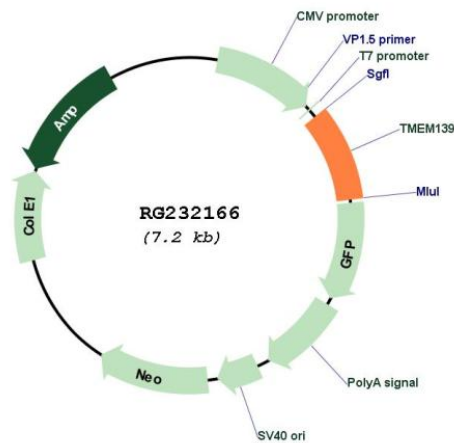
Restriction Sites: SgfI-MluI

Cloning Scheme:

Cloning sites used for ORF Shutting:



Plasmid Map:



ACCN: NM_001242774

ORF Size: 648 bp

OTI Disclaimer: The molecular sequence of this clone aligns with the gene accession number as a point of reference only. However, individual transcript sequences of the same gene can differ through naturally occurring variations (e.g. polymorphisms), each with its own valid existence. This clone is substantially in agreement with the reference, but a complete review of all prevailing variants is recommended prior to use. [More info](#)

OTI Annotation: This clone was engineered to express the complete ORF with an expression tag. Expression varies depending on the nature of the gene.

Components:	The ORF clone is ion-exchange column purified and shipped in a 2D barcoded Matrix tube containing 10ug of transfection-ready, dried plasmid DNA (reconstitute with 100 ul of water).
Reconstitution Method:	<ol style="list-style-type: none">1. Centrifuge at 5,000xg for 5min.2. Carefully open the tube and add 100ul of sterile water to dissolve the DNA.3. Close the tube and incubate for 10 minutes at room temperature.4. Briefly vortex the tube and then do a quick spin (less than 5000xg) to concentrate the liquid at the bottom.5. Store the suspended plasmid at -20°C. The DNA is stable for at least one year from date of shipping when stored at -20°C.
RefSeq:	<u>NM_001242774.2, NP_001229703.1</u>
RefSeq Size:	2189 bp
RefSeq ORF:	651 bp
Locus ID:	135932
UniProt ID:	<u>Q8IV31</u>
Cytogenetics:	7q34
Protein Families:	Transmembrane
Gene Summary:	May be involved in cellular trafficking of proteins such as SLC4A1.[UniProtKB/Swiss-Prot Function]