

Product datasheet for **RG232125**

AAGAB (NM_001271885) Human Tagged ORF Clone

Product data:

Product Type: Expression Plasmids
Product Name: AAGAB (NM_001271885) Human Tagged ORF Clone
Tag: TurboGFP
Symbol: AAGAB
Synonyms: KPPP1; p34; PPKP1; PPKP1A
Mammalian Cell Selection: Neomycin
Vector: pCMV6-AC-GFP (PS100010)
E. coli Selection: Ampicillin (100 ug/mL)
ORF Nucleotide Sequence: >RG232125 representing NM_001271885
 Red=Cloning site Blue=ORF Green=Tags(s)

TTTTGTAATACGACTCACTATAGGGCGGCCGGAATTCGTCGACTGGATCCGGTACCGAGGAGATCTGCC
 GCC**CGATCGCC**

ATGATCTTGGTCTGCGATAGAGTGTCTGAAGATGGTATAAACCGACAAAAAGCTCAAGAATGGTGCATCA
 AACATGGCTTTGAATTGGTAGAAGTCTAGTCCAGAGGAGTTGCCTGAGGAGGATGATGACTCCCAGAATC
 TACAGGAGTAAAGCGAATTGTCCAAGCCCTGAATGCCAATGTGTGGTCCAATGTAGTATGAAGAATGAT
 AGGAACCAAGGCTTTAGCCTTCTCAACTATTGACTGGAACAAACCATAGCATTGGGTGAGCAGATCCCT
 GTCACCCAGAGCAACCCATTTGCCAGCAGCAGATAGTACTGAATCCCTCTCTGATCATCGGGGTGGTGC
 ATCTAACACAACAGATGCCAGGTTGATAGCATTGTGGATCCCATGTTAGATCTGGATATCAAGAATTA
 GCCAGTCTTACCACTGGAGGAGGAGATGTGGAGAATTTTAAAAGACTCTTTTCAAAGTTAAAGGAAATGA
 AAGACAAGGCTGCGACGCTTCTCATGAGCAAAGAAAAGTGCATGCAGAAAAGGTGGCCAAAGCATTCTG
 GATGGCAATCGGGGGAGACAGAGATGAAATTGAAGGCCTTTCATCTGATGAAGAGCAC

ACGCGTACGCGGCCGCTCGAG - GFP Tag - GTTTAA

Protein Sequence: >RG232125 representing NM_001271885
 Red=Cloning site Green=Tags(s)

MILVCDRVSEGINRQKAQEWCIKHGFELVELSPEELPEEDDDFPESTGVKRVQALNANVWSNVVMKND
 RNQGFSLNLSLTGTNHSIGSADPCHPEQPHLPAADSTESLSDHRGGASNTTDAQVDSIVDPMLDLDIQEL
 ASLTTGGGDVENFERLFSLKEMKDKAATLPHEQRKVHAEKVAKAFWMAIGGDRDEIEGLSSDEEH

TRTRPLE - GFP Tag - V

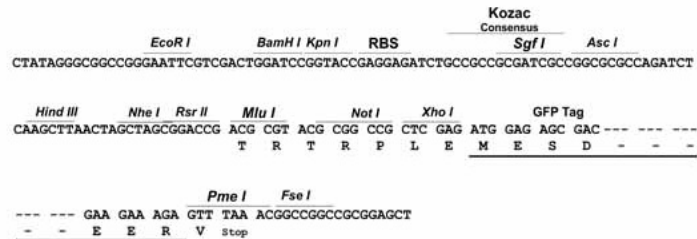
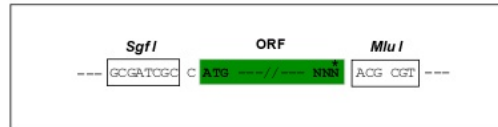
Restriction Sites: SgfI-MluI



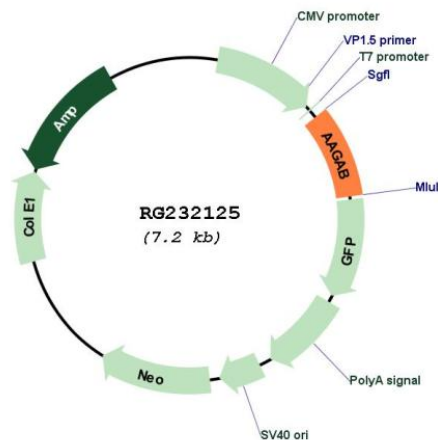
[View online »](#)

Cloning Scheme:

Cloning sites used for ORF Shutting:



Plasmid Map:



ACCN: NM_001271885

ORF Size: 618 bp

OTI Disclaimer: The molecular sequence of this clone aligns with the gene accession number as a point of reference only. However, individual transcript sequences of the same gene can differ through naturally occurring variations (e.g. polymorphisms), each with its own valid existence. This clone is substantially in agreement with the reference, but a complete review of all prevailing variants is recommended prior to use. [More info](#)

OTI Annotation: This clone was engineered to express the complete ORF with an expression tag. Expression varies depending on the nature of the gene.

Components: The ORF clone is ion-exchange column purified and shipped in a 2D barcoded Matrix tube containing 10ug of transfection-ready, dried plasmid DNA (reconstitute with 100 ul of water).

Reconstitution Method:

1. Centrifuge at 5,000xg for 5min.
2. Carefully open the tube and add 100ul of sterile water to dissolve the DNA.
3. Close the tube and incubate for 10 minutes at room temperature.
4. Briefly vortex the tube and then do a quick spin (less than 5000xg) to concentrate the liquid at the bottom.
5. Store the suspended plasmid at -20°C. The DNA is stable for at least one year from date of shipping when stored at -20°C.

RefSeq: [NM_001271885.1](#), [NP_001258814.1](#)

RefSeq Size: 3083 bp

RefSeq ORF: 621 bp

Locus ID: 79719

UniProt ID: [Q6PD74](#)

Cytogenetics: 15q23

Gene Summary: The protein encoded by this gene interacts with the gamma-adaptin and alpha-adaptin subunits of complexes involved in clathrin-coated vesicle trafficking. Mutations in this gene are associated with type I punctate palmoplantar keratoderma. Alternatively spliced transcript variants have been found for this gene. [provided by RefSeq, Dec 2012]