

Product datasheet for **RG232120**

RTBDN (NM_001270440) Human Tagged ORF Clone

Product data:

Product Type: Expression Plasmids
Product Name: RTBDN (NM_001270440) Human Tagged ORF Clone
Tag: TurboGFP
Symbol: RTBDN
Mammalian Cell Selection: Neomycin
Vector: pCMV6-AC-GFP (PS100010)
E. coli Selection: Ampicillin (100 ug/mL)
ORF Nucleotide Sequence: >RG232120 representing NM_001270440
 Red=Cloning site Blue=ORF Green=Tags(s)

TTTTGTAATACGACTCACTATAGGGCGGCCGGAATTCGTCGACTGGATCCGGTACCGAGGAGATCTGCC
 GCC**CGATCGCC**

ATGGACGAAGCCCTAGAAACGCAGCTGAAGACGAGCAGAGGACGCTTCTCGGCTACAGAATCCCTCCCA
 CCTTGGAGCTCTTATCTCAGGTGGACATGGACTGCAGGGTCCACATGCGACCCATCGGCCTGACGTGGGT
 GCTGCAACTGACCTTGGCATGGATCCTGCTAGAAGCCTGTGGAGGGAGCCGCCACTCCAAGCCAGGTCC
 CAGCAACACCATGGGCTGGCAGCTGATCTGGGCAAAGGCAAGCTGCACCTGGCAGGACCTTGTGTCCCT
 CAGAGATGGACACAACAGAGACATCGGGCCCTGGAAACCATCCAGAACGCTGTGGAGTGCCGAGCCCTGA
 ATGCGAATCCTTCTGGAACACCTCCAACGTGCCCTTCGAGTCGCTTCCGCCTGCGGCTATTGGGGGTA
 CGCCAGGCACAGCCGCTCTGCGAGGAGCTTGCCAGGCCTGGTTCGCCAACTGCGAAGATGATATCACCT
 GCGGCCCGACTTGGCTCCCACTCTCAGAAAAAGGGGCTGTGAGCCAGCTGCCTTACCTATGGACAGGC
 TGGAGTGCAGTGGCGGATCTCAGCTCGATGCAACCTCCGCCTCCGGGTTCAAG

ACGCGTACGCGGCCGCTCGAG - GFP Tag - GTTTAA

Protein Sequence: >RG232120 representing NM_001270440
 Red=Cloning site Green=Tags(s)

MDEALETQLKTSRGRFSATESLPTLELLSQVDMDCRVHMRPIGLTWVLQLTLAWILLEACGGSRPLQARS
 QQHHGLAADLGKGLHLAGPCCPSEMDTTETSGPGNHPERCGVPSPECESFLEHLQRALRSRFLRLLLGV
 RQAQPLCEELCQAWFANCEDDITCGPTWLPSEKRGCEPSCLTYGQAGVQWRDLSSMQPPPPGFK

TRTRPLE - GFP Tag - V

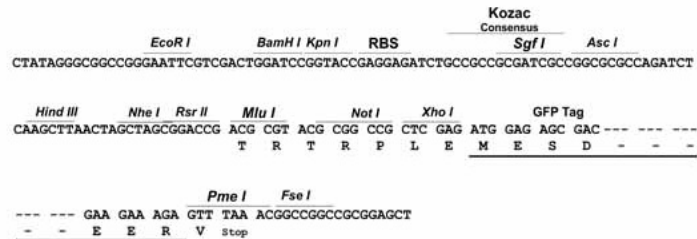
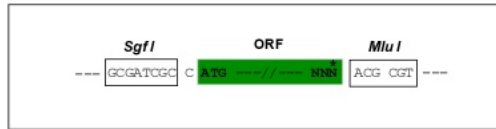
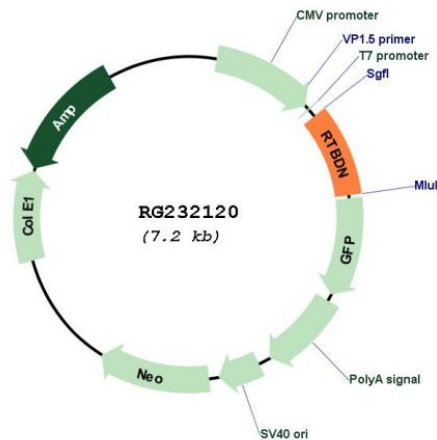
Restriction Sites: SgfI-MluI



[View online »](#)

Cloning Scheme:

Cloning sites used for ORF Shutting:


Plasmid Map:

ACCN: NM_001270440

ORF Size: 615 bp

OTI Disclaimer: The molecular sequence of this clone aligns with the gene accession number as a point of reference only. However, individual transcript sequences of the same gene can differ through naturally occurring variations (e.g. polymorphisms), each with its own valid existence. This clone is substantially in agreement with the reference, but a complete review of all prevailing variants is recommended prior to use. [More info](#)
OTI Annotation: This clone was engineered to express the complete ORF with an expression tag. Expression varies depending on the nature of the gene.

| | |
|-------------------------------|---|
| Components: | The ORF clone is ion-exchange column purified and shipped in a 2D barcoded Matrix tube containing 10ug of transfection-ready, dried plasmid DNA (reconstitute with 100 ul of water). |
| Reconstitution Method: | <ol style="list-style-type: none">1. Centrifuge at 5,000xg for 5min.2. Carefully open the tube and add 100ul of sterile water to dissolve the DNA.3. Close the tube and incubate for 10 minutes at room temperature.4. Briefly vortex the tube and then do a quick spin (less than 5000xg) to concentrate the liquid at the bottom.5. Store the suspended plasmid at -20°C. The DNA is stable for at least one year from date of shipping when stored at -20°C. |
| RefSeq: | <u>NM_001270440.1, NP_001257369.1</u> |
| RefSeq Size: | 2095 bp |
| RefSeq ORF: | 618 bp |
| Locus ID: | 83546 |
| Cytogenetics: | 19p13.13 |
| Protein Families: | Druggable Genome, Secreted Protein |
| Gene Summary: | This gene was first identified in a study of human eye tissues. The protein encoded by this gene is preferentially expressed in the retina and may play a role in binding retinoids and other carotenoids as it shares homology with riboflavin binding proteins. Alternative splicing results in multiple transcript variants and protein isoforms. [provided by RefSeq, Jul 2012] |