

## Product datasheet for **RG232104**

### ARFRP1 (NM\_001267547) Human Tagged ORF Clone

#### Product data:

**Product Type:** Expression Plasmids  
**Product Name:** ARFRP1 (NM\_001267547) Human Tagged ORF Clone  
**Tag:** TurboGFP  
**Symbol:** ARFRP1  
**Synonyms:** ARL18; ARP; Arp1  
**Mammalian Cell Selection:** Neomycin  
**Vector:** pCMV6-AC-GFP (PS100010)  
**E. coli Selection:** Ampicillin (100 ug/mL)  
**ORF Nucleotide Sequence:** >RG232104 representing NM\_001267547  
Red=Cloning site Blue=ORF Green=Tags(s)

TTTTGTAATACGACTCACTATAGGGCGCCGGGAATTCGTCGACTGGATCCGGTACCGAGGAGATCTGCC  
GCC**CGATCGCC**

ATGTACACGCTGCTGTCGGGCTTGTACAAGTACATGTTTCAGAAGGACGAGTACTGCATCCTGATCCTGG  
GCCTGGACAATGCTGGGAAGACGACCTTCTGGAGCAGTCGAAAACCCGATTTAAACAAGAACTACAAGGG  
GATGAGTCTATCCAAAATCACCACCACCGTGGCCTAAACATCGGCACTGTGGATGTGGAAAGGCTCGG  
CTCATGTTCTGGACTTAGGAGGGCAGGAAGAGCTGCAGTCTTTGTGGACAAGTATTATCGGGAGTGTC  
ACGGCGTCATCTACGTCATTGACTCCACCGACGAGGAGGCTGGCTGAGTCCAAGCAGGCGTTTGAGAA  
GGTGGTGACCAGCGAGGGCTGTGCGGTGTCCCGTCTTGGTGTGGCCAACAAGCAGGATGTGGAGACG  
TGCCCTCAATCCCTGACATCAAGACGGCCTTCAGCGACTGCACCAGCAAGATCGGCAGGCGAGATTGCC  
TGACCCAGGCCTGCTCGGCCCTCACAGGCAAAGGGGTGCGCGAGGGCATCGAGTGGATGGTGAAGTGTGT  
CGTGCGGAATGTGCACCGGCCCGCCGCGCAGAGGGACATCACG

**ACGCGT**ACGCGGCCGCTCGAG - GFP Tag - GTTTAA

**Protein Sequence:** >RG232104 representing NM\_001267547  
Red=Cloning site Green=Tags(s)

MYLLSGLYKYMFKDEYICILILGLDNAGKTFLEQSKTRFNKNYKMSLSKITTTVGLNIGTVDVGKAR  
LMFWDLGGQEELQSLWDKYAECHEGVIYVIDSTDEERLAESKQAFKVVVSEALCGVPVLVLANKQDVET  
CLSIPIDKTAFSDCTSKIGRRDCLTQACSALTGKGVREGIEWMVKVVRNVHRPPRQDIT

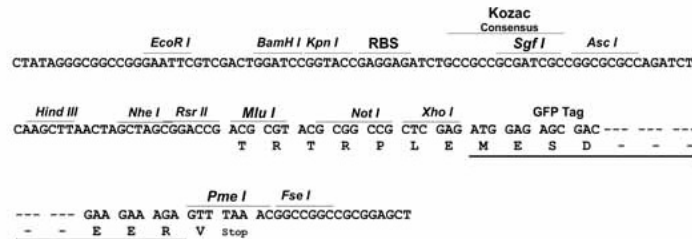
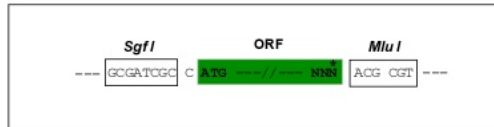
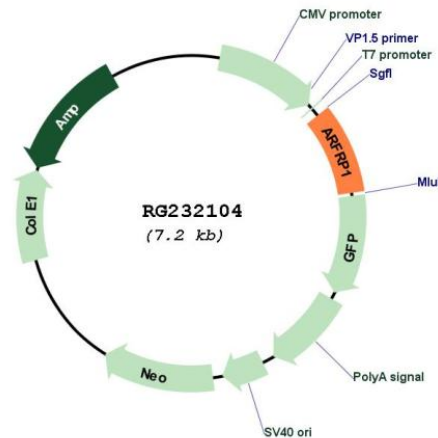
**TRTRPLE** - GFP Tag - V

**Restriction Sites:** SgfI-MluI



**Cloning Scheme:**

Cloning sites used for ORF Shutting:


**Plasmid Map:**

**ACCN:** NM\_001267547

**ORF Size:** 603 bp

**OTI Disclaimer:** The molecular sequence of this clone aligns with the gene accession number as a point of reference only. However, individual transcript sequences of the same gene can differ through naturally occurring variations (e.g. polymorphisms), each with its own valid existence. This clone is substantially in agreement with the reference, but a complete review of all prevailing variants is recommended prior to use. [More info](#)
**OTI Annotation:** This clone was engineered to express the complete ORF with an expression tag. Expression varies depending on the nature of the gene.

**Components:** The ORF clone is ion-exchange column purified and shipped in a 2D barcoded Matrix tube containing 10ug of transfection-ready, dried plasmid DNA (reconstitute with 100 ul of water).

**Reconstitution Method:**

1. Centrifuge at 5,000xg for 5min.
2. Carefully open the tube and add 100ul of sterile water to dissolve the DNA.
3. Close the tube and incubate for 10 minutes at room temperature.
4. Briefly vortex the tube and then do a quick spin (less than 5000xg) to concentrate the liquid at the bottom.
5. Store the suspended plasmid at -20°C. The DNA is stable for at least one year from date of shipping when stored at -20°C.

**RefSeq:** [NM\\_001267547.3](#)

**RefSeq Size:** 2575 bp

**RefSeq ORF:** 606 bp

**Locus ID:** 10139

**UniProt ID:** [Q13795](#)

**Cytogenetics:** 20q13.33

**Gene Summary:** The protein encoded by this gene is a membrane-associated GTP-ase which localizes to the plasma membrane and is related to the ADP-ribosylation factor (ARF) and ARF-like (ARL) proteins. This gene plays a role in membrane trafficking between the trans-Golgi network and endosomes. Alternatively spliced transcript variants encoding different isoforms have been identified. [provided by RefSeq, May 2012]