

## Product datasheet for **RG232074**

### **PDCD2 (NM\_001199463) Human Tagged ORF Clone**

#### Product data:

**Product Type:** Expression Plasmids  
**Product Name:** PDCD2 (NM\_001199463) Human Tagged ORF Clone  
**Tag:** TurboGFP  
**Symbol:** PDCD2  
**Synonyms:** RP8; ZMYND7  
**Mammalian Cell Selection:** Neomycin  
**Vector:** pCMV6-AC-GFP (PS100010)  
**E. coli Selection:** Ampicillin (100 ug/mL)  
**ORF Nucleotide Sequence:** >RG232074 representing NM\_001199463  
 Red=Cloning site Blue=ORF Green=Tags(s)

TTTTGTAAACGACTCACTATAGGGCGGCCGGAATTCGTCGACTGGATCCGGTACCGAGGAGATCTGCC  
 GCC**CGATCGC**C

ATGGCTGCCGCCGGGGCCAGGCCTGTGGAGCTGGGCTTCGCCGAGTCGGCGCCGGCGTGGCGACTGCGCA  
 GCGAGCAGTTCCCGAGCAAGGTGTATGCCCGCTGCCTGGCCGCCCGGACGCCTTCCACCGCTGCATCTT  
 CCTCTTCTGCTGCCGCGAGCAGCCGTGCTGTGCCGGCTGCGAGTTTTAGGAATCAACTACCCAGGAAA  
 AACGATTTTTACTCATATGAGCCACCTTCTGAGAATCCTCCCCAGAAACAGGAGAATCAGTGTGTCTCC  
 AGCTTAAGTCTGGTGCTCATCTCTGCAGGGTTTGTGGCTTTAGGCCCCAAACGTGCTCCAGATGCCA  
 CAAAGCATATTACTGCAGCAAGGAGCATCAGACCCTAGACTGGAGATTGGGACATAAGCAGGCTTGTGCA  
 CAACCAGATCATCTGGACCATATAATTCCAGACCACAACCTTCCTTTTCCAGAATTTGAAATTGTAATAG  
 AAACAGAAGATGAGATTATGCCTGAGGTTGTGGAAGGAAGATTACTCAGAGATTATAGGGAGCATGGG  
 TAAGCAGTTTCAGGACTTCATTCAT

A**CGCGT**ACGCGGCCGCTCGAG - GFP Tag - GTTTAA

**Protein Sequence:** >RG232074 representing NM\_001199463  
 Red=Cloning site Green=Tags(s)

MAAAGARPVELGFAESAPAWRLRSEQFPSKVYAPLPGRPDAFHRCIFLCCREQPCCAGLRVFRNQLPRK  
 NDFYSYEPPSENPPPETGESVCLQLKSGAHLRCVCGCLGPKTCRCHKAYYCSKEHQTLDWRLGHKQACA  
 QPDHLDHIIPDHNFLPFEFEIVIEDEIMPEVVEKEDYSEIIGSMGKQFQDFIH

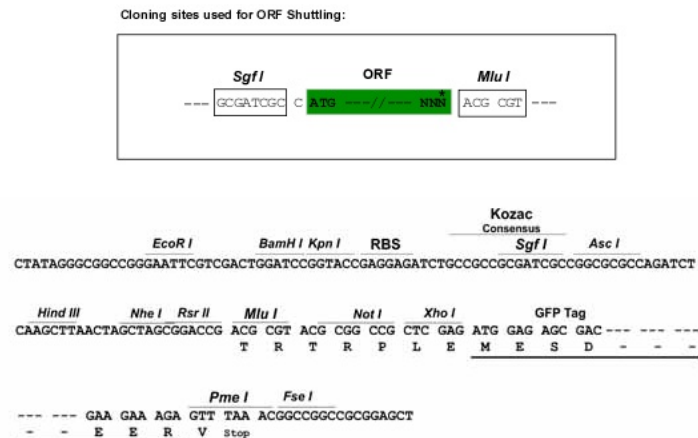
T**R**TRPLE - GFP Tag - V

**Restriction Sites:** Sgfl-MluI



View online »

## Cloning Scheme:



ACCN: NM\_001199463

ORF Size: 585 bp

OTI Disclaimer: The molecular sequence of this clone aligns with the gene accession number as a point of reference only. However, individual transcript sequences of the same gene can differ through naturally occurring variations (e.g. polymorphisms), each with its own valid existence. This clone is substantially in agreement with the reference, but a complete review of all prevailing variants is recommended prior to use. [More info](#)

OTI Annotation: This clone was engineered to express the complete ORF with an expression tag. Expression varies depending on the nature of the gene.

Components: The ORF clone is ion-exchange column purified and shipped in a 2D barcoded Matrix tube containing 10ug of transfection-ready, dried plasmid DNA (reconstitute with 100 ul of water).

Reconstitution Method:

1. Centrifuge at 5,000xg for 5min.
2. Carefully open the tube and add 100ul of sterile water to dissolve the DNA.
3. Close the tube and incubate for 10 minutes at room temperature.
4. Briefly vortex the tube and then do a quick spin (less than 5000xg) to concentrate the liquid at the bottom.
5. Store the suspended plasmid at -20°C. The DNA is stable for at least one year from date of shipping when stored at -20°C.

RefSeq: [NM\\_001199463.2](#)

RefSeq Size: 1961 bp

RefSeq ORF: 588 bp

Locus ID: 5134

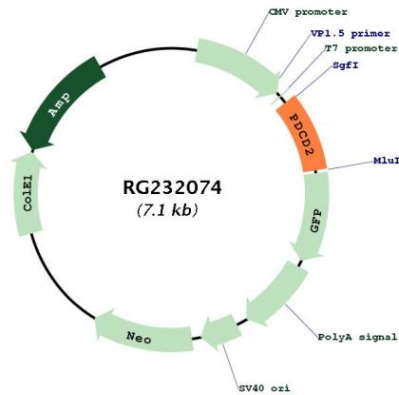
UniProt ID: [Q16342](#)

Cytogenetics: 6q27

**Gene Summary:**

This gene encodes a nuclear protein expressed in a variety of tissues. Expression of this gene has been shown to be repressed by B-cell CLL/lymphoma 6 (BCL6), a transcriptional repressor required for lymph node germinal center development, suggesting that BCL6 regulates apoptosis by its effects on this protein. Alternative splicing results in multiple transcript variants and pseudogenes have been identified on chromosomes 9 and 12. [provided by RefSeq, Dec 2010]

**Product images:**



Circular map for RG232074