

Product datasheet for **RG232051**

CDHH (CDH13) (NM_001220491) Human Tagged ORF Clone

Product data:

Product Type: Expression Plasmids
Product Name: CDHH (CDH13) (NM_001220491) Human Tagged ORF Clone
Tag: TurboGFP
Symbol: CDH13
Synonyms: CDHH; P105
Mammalian Cell Selection: Neomycin
Vector: pCMV6-AC-GFP (PS100010)
E. coli Selection: Ampicillin (100 ug/mL)
ORF Nucleotide Sequence: >RG232051 representing NM_001220491
Red=Cloning site Blue=ORF Green=Tags(s)

TTTTGTAATACGACTCACTATAGGGCGCCGGGAATTCGTCGACTGGATCCGGTACCGAGGAGATCTGCC
GCC**CGATCGCC**

ATGCAGCCGAGAAGCTCCGCTCGTTCTGTGCGTTCTCCTGTCCCAGGTGCTGCTAACATCTGCAGAAG
ATTTGGACTGCACTCCTGGATTCAGCAGAAAGTGTCCATATCAATCAGCCAGCTGAATTCATTGAGGA
CCAGTCAATCTAACTTGACCTTCAGTGACTGTAAGGGAAACGACAAGCTACGCTATGAGGTCTCGAGC
CCATACTCAAGGTGAACAGCGATGGCGGCTTAGTTGCTCTGAGAAACATAACTGCAGTGGGCAAAACTC
TGTTTCGTCATGCACGGACCCCATGCGGAAGATATGGCAGAAGCTCGTATTGTCGGGGGAAAGACAT
CCAGGGCTCCTTGCAAGATATATTTAAATTTGCAAGAAGCTCTCCTGTCCAAGACAAAAGAGGTCCATT
GTGGTATCTCCATTTTAATCCAGAGAATCAGAGACAGCCTTTCCCAAGAGATGTTGGCAAGAGAACCC
ACAATCTATTAACAGCGAACTTCTCTTGAATGAAGGCATTACAGCAGATTTAAATCCATGCATTACAAT
TTTAGCAATT

ACGCGTACGCGGCCGCTCGAG - GFP Tag - GTTTAA

Protein Sequence: >RG232051 representing NM_001220491
Red=Cloning site Green=Tags(s)

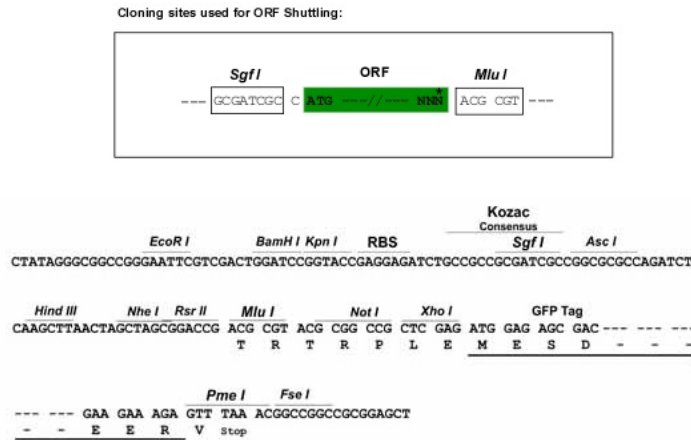
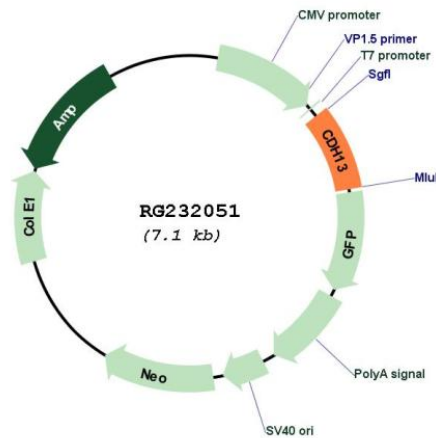
MQPRTPPLVLCVLLSQVLLLSAEDLDCTPGFQQKVFHINQPAEFIEDQSILNLTFSDCKGNDKLRYEVSS
PYFKVNSDGLVALRNITAVGKTLFVHARTPHAEDMAELVIVGGKDIQGSLODIFKFARTSPVPRQKRSI
VVSPIILIPENQRQPFPRDVGKRTHNPINSELLLNNEGITADLNPCITILAI

TRTRPLE - GFP Tag - V

Restriction Sites: Sgfl-MluI



[View online »](#)

Cloning Scheme:

Plasmid Map:


ACCN: NM_001220491

ORF Size: 570 bp

OTI Disclaimer: The molecular sequence of this clone aligns with the gene accession number as a point of reference only. However, individual transcript sequences of the same gene can differ through naturally occurring variations (e.g. polymorphisms), each with its own valid existence. This clone is substantially in agreement with the reference, but a complete review of all prevailing variants is recommended prior to use. [More info](#)

OTI Annotation: This clone was engineered to express the complete ORF with an expression tag. Expression varies depending on the nature of the gene.

Components: The ORF clone is ion-exchange column purified and shipped in a 2D barcoded Matrix tube containing 10ug of transfection-ready, dried plasmid DNA (reconstitute with 100 ul of water).

Reconstitution Method:

1. Centrifuge at 5,000xg for 5min.
2. Carefully open the tube and add 100ul of sterile water to dissolve the DNA.
3. Close the tube and incubate for 10 minutes at room temperature.
4. Briefly vortex the tube and then do a quick spin (less than 5000xg) to concentrate the liquid at the bottom.
5. Store the suspended plasmid at -20°C. The DNA is stable for at least one year from date of shipping when stored at -20°C.

RefSeq: [NM_001220491.2](#)

RefSeq Size: 955 bp

RefSeq ORF: 573 bp

Locus ID: 1012

UniProt ID: [P55290](#)

Cytogenetics: 16q23.3

Gene Summary: This gene encodes a member of the cadherin superfamily. The encoded protein is localized to the surface of the cell membrane and is anchored by a GPI moiety, rather than by a transmembrane domain. The protein lacks the cytoplasmic domain characteristic of other cadherins, and so is not thought to be a cell-cell adhesion glycoprotein. This protein acts as a negative regulator of axon growth during neural differentiation. It also protects vascular endothelial cells from apoptosis due to oxidative stress, and is associated with resistance to atherosclerosis. The gene is hypermethylated in many types of cancer. Alternative splicing results in multiple transcript variants encoding different isoforms. [provided by RefSeq, May 2011]