

Product datasheet for **RG232036**

UBE2W (NM_001271015) Human Tagged ORF Clone

Product data:

Product Type: Expression Plasmids
Product Name: UBE2W (NM_001271015) Human Tagged ORF Clone
Tag: TurboGFP
Symbol: UBE2W
Synonyms: UBC-16; UBC16
Mammalian Cell Selection: Neomycin
Vector: pCMV6-AC-GFP (PS100010)
E. coli Selection: Ampicillin (100 ug/mL)
ORF Nucleotide Sequence: >RG232036 representing NM_001271015
 Red=Cloning site Blue=ORF Green=Tags(s)

TTTTGTAATACGACTCACTATAGGGCGGCCGGAATTCGTCGACTGGATCCGGTACCGAGGAGATCTGCC
 GCC**CGATCGCC**

ATGTTGAGCCCCCGCGCGTGACGCGAGCACGGCAGCTCCTCCCCCTGCGTCTCTGGCCTCGCCGGTCTT
 GGGGGGATGGTTCATCATGGCGTCAATGCAGAAACGACTACAGAAAGAACTGTTGGCTTTGCAAAATGA
 CCCACCTCCTGGAATGACCTTAAATGAGAAGAGTGTTCAAAATCAATTACACAGTGGATTGTAGACATG
 GAAGGTGCACCAGGTACCTTATATGAAGGGGAAAAATTTCAACTTCTATTTAAATTTAGTAGTCGATATC
 CTTTTGACTCTCCTCAGGTCATGTTTACTGGTGAAAATATTCCTGTTTCATCCTCATGTTTATAGCAATGG
 TCATATCTGTTTATCCATTCTAACAGAAGACTGGTCCCCAGCGCTCTCAGTCCAATCAGTTTGTCTTAGC
 ATTATTAGCATGCTTTCCAGCTGCAAGGAAAAGAGACGACCACCGGATAATTCTTTTTATGTGCGAACAT
 GTAACAAGAATCCAAGAAAACAAAATGGTGGTATCATGAACTGAAATCTGCCTTCATACTATCTATTAC
 GGAT

ACGCGTACGCGGCCGCTCGAG - GFP Tag - GTTTAA

Protein Sequence: >RG232036 representing NM_001271015
 Red=Cloning site Green=Tags(s)

MLSPRGVTRARQLLPLRLWPRRSWGDGSIAMSMQKRLQKELLALQNDPPPMTLNEKSVQNSITQWIVDM
 EGAPGTLYEKEFQLLFKFSRYPFDSPQVMFTGENIPVHPHVYSNGHICLSILTEDWSPALSVQSVCLS
 IISMLSSCKEKRRPPDNSFYVRTCNKNPKKTKWYHELKSAFILSITD

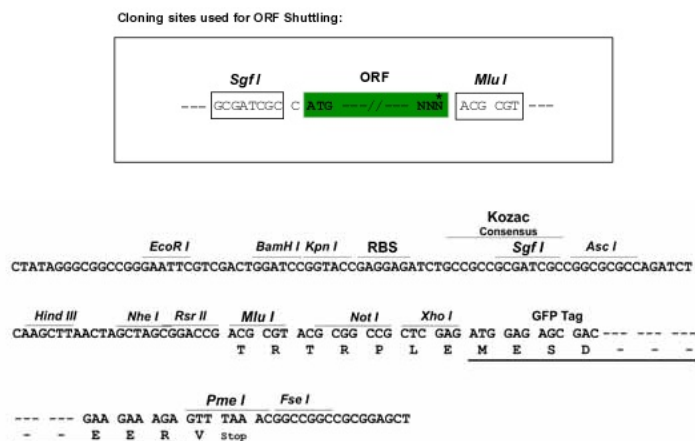
TRTRPLE - GFP Tag - V

Restriction Sites: Sgfl-MluI

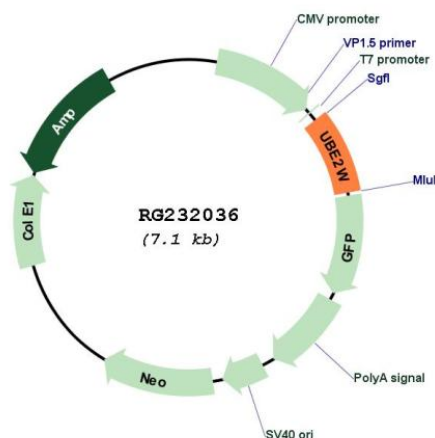


[View online »](#)

Cloning Scheme:



Plasmid Map:



ACCN:

NM_001271015

ORF Size:

564 bp

OTI Disclaimer:

The molecular sequence of this clone aligns with the gene accession number as a point of reference only. However, individual transcript sequences of the same gene can differ through naturally occurring variations (e.g. polymorphisms), each with its own valid existence. This clone is substantially in agreement with the reference, but a complete review of all prevailing variants is recommended prior to use. [More info](#)

OTI Annotation:

This clone was engineered to express the complete ORF with an expression tag. Expression varies depending on the nature of the gene.

Components:

The ORF clone is ion-exchange column purified and shipped in a 2D barcoded Matrix tube containing 10ug of transfection-ready, dried plasmid DNA (reconstitute with 100 ul of water).

Reconstitution Method:

1. Centrifuge at 5,000xg for 5min.
2. Carefully open the tube and add 100ul of sterile water to dissolve the DNA.
3. Close the tube and incubate for 10 minutes at room temperature.
4. Briefly vortex the tube and then do a quick spin (less than 5000xg) to concentrate the liquid at the bottom.
5. Store the suspended plasmid at -20°C. The DNA is stable for at least one year from date of shipping when stored at -20°C.

RefSeq: [NM_001271015.1](#), [NP_001257944.1](#)

RefSeq Size: 951 bp

RefSeq ORF: 480 bp

Locus ID: 55284

UniProt ID: [Q96B02](#)

Cytogenetics: 8q21.11

Protein Families: Transcription Factors

Protein Pathways: Ubiquitin mediated proteolysis

Gene Summary: This gene encodes a nuclear-localized ubiquitin-conjugating enzyme (E2) that, along with ubiquitin-activating (E1) and ligating (E3) enzymes, coordinates the addition of a ubiquitin moiety to existing proteins. The encoded protein promotes the ubiquitination of Fanconi anemia complementation group proteins and may be important in the repair of DNA damage. There is a pseudogene for this gene on chromosome 1. Alternative splicing results in multiple transcript variants. [provided by RefSeq, Aug 2012]