

Product datasheet for **RG231971**

LHX6 (NM_001242335) Human Tagged ORF Clone

Product data:

Product Type: Expression Plasmids
Product Name: LHX6 (NM_001242335) Human Tagged ORF Clone
Tag: TurboGFP
Symbol: LHX6
Synonyms: LHX6.1
Mammalian Cell Selection: Neomycin
Vector: pCMV6-AC-GFP (PS100010)
E. coli Selection: Ampicillin (100 ug/mL)
ORF Nucleotide Sequence: >RG231971 representing NM_001242335
 Red=Cloning site Blue=ORF Green=Tags(s)

TTTTGTAATACGACTCACTATAGGGCGGCCGGAATTCGTCGACTGGATCCGGTACCGAGGAGATCTGCC
 GCC**CGATCGCC**

ATGATTGAGAACCTCAAGAGGGCCGCCGAGAACGGGAACGGCCTCACGTTGGAGGGGGCAGTGCCCTCGG
 AACAGGACAGTCAACCCAAGCCGGCCAAGCGCGCGGACGTCTTCACCGGGAACAGTGCAGGTTAT
 GCAGGCGCAGTTCGCGCAGGACAACAACCCCGACGCTCAGACGCTGCAGAAGCTGGCGGACATGACGGGC
 CTCAGCCGGAGAGTCATCCAGGTGTGGTTTCAAACCTGCCGGGCGGTCATAAAAAGCACACGCCGCAAC
 ACCCAGTGCCGCCCTCGGGGGCGCCCGTCCCGCCTTCCTCCGCCCTGTCGACGACATCCACTACAC
 CCCGTTACAGCAGCCCGAGCGGGCGCGCATGGTCAACCCTGCACGGCTACATTGAGAGTCAGGTACAGTGC
 GGGCAGGTGCACTGCCGGCTGCCTTACACCGCACCCCGTCCACCTCAAAGCCGATATGGATGGGCGCG
 TCTCCAACCGGGGTGAGAAGGTCATCTTTTTCAGTAC

ACGCGTACGCGGCCGCTCGAG - GFP Tag - GTTTAA

Protein Sequence: >RG231971 representing NM_001242335
 Red=Cloning site Green=Tags(s)

MIENLKRAAENGLTLEGAVPSEQDSQPKPAKRARTSF TAEQLQVMAQFAQDNNPDAQTLQKLADMTG
 LSRRVIQVWFQNCRARHKHTPQHPVPPSGAPPSRLPSALSDDIHYTPFSSPERARMVTLHGVIYSQVQC
 GQVHCRLPYTAPPVHLKADMDGPLSNRGEKVFILFQY

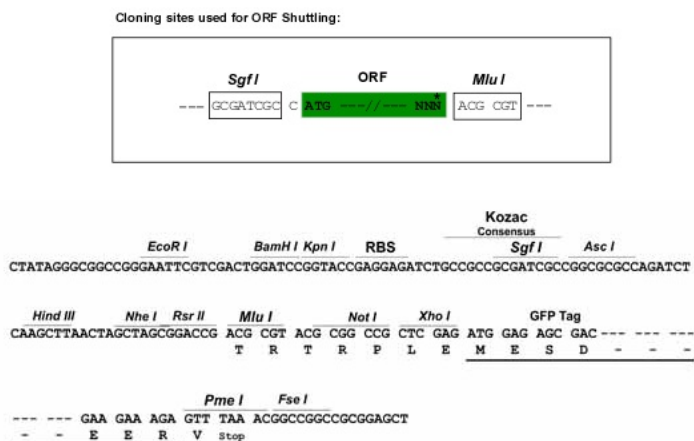
TRTRPLE - GFP Tag - V

Restriction Sites: SgfI-MluI

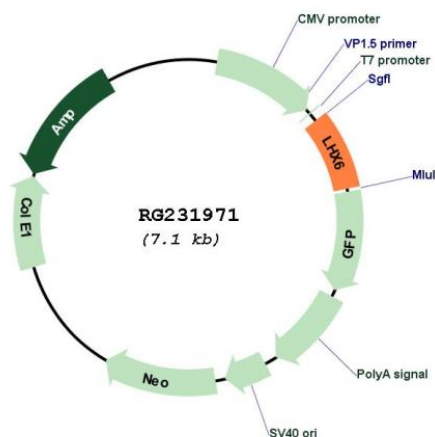


[View online »](#)

Cloning Scheme:



Plasmid Map:



ACCN: NM_001242335

ORF Size: 528 bp

OTI Disclaimer: The molecular sequence of this clone aligns with the gene accession number as a point of reference only. However, individual transcript sequences of the same gene can differ through naturally occurring variations (e.g. polymorphisms), each with its own valid existence. This clone is substantially in agreement with the reference, but a complete review of all prevailing variants is recommended prior to use. [More info](#)

OTI Annotation: This clone was engineered to express the complete ORF with an expression tag. Expression varies depending on the nature of the gene.

Components:	The ORF clone is ion-exchange column purified and shipped in a 2D barcoded Matrix tube containing 10ug of transfection-ready, dried plasmid DNA (reconstitute with 100 ul of water).
Reconstitution Method:	<ol style="list-style-type: none">1. Centrifuge at 5,000xg for 5min.2. Carefully open the tube and add 100ul of sterile water to dissolve the DNA.3. Close the tube and incubate for 10 minutes at room temperature.4. Briefly vortex the tube and then do a quick spin (less than 5000xg) to concentrate the liquid at the bottom.5. Store the suspended plasmid at -20°C. The DNA is stable for at least one year from date of shipping when stored at -20°C.
RefSeq:	<u>NM_001242335.1, NP_001229264.1</u>
RefSeq Size:	3603 bp
RefSeq ORF:	531 bp
Locus ID:	26468
UniProt ID:	<u>Q9UPM6</u>
Cytogenetics:	9q33.2
Protein Families:	Transcription Factors
Gene Summary:	This gene encodes a member of a large protein family that contains the LIM domain, a unique cysteine-rich zinc-binding domain. The encoded protein has tandem LIM domains as well as a DNA-binding homeodomain. The protein functions as a transcription factor involved in embryogenesis and head development and is highly expressed in neural crest derived mesenchyme cells. Alternative splicing results in multiple transcript variants encoding distinct isoforms. [provided by RefSeq, Jan 2017]