

Product datasheet for **RG231955**

Bcl rambo (BCL2L13) (NM_001270734) Human Tagged ORF Clone

Product data:

Product Type: Expression Plasmids
Product Name: Bcl rambo (BCL2L13) (NM_001270734) Human Tagged ORF Clone
Tag: TurboGFP
Symbol: BCL2L13
Synonyms: BCL-RAMBO; Bcl2-L-13; MIL1
Mammalian Cell Selection: Neomycin
Vector: pCMV6-AC-GFP (PS100010)
E. coli Selection: Ampicillin (100 ug/mL)
ORF Nucleotide Sequence: >RG231955 representing NM_001270734
Red=Cloning site Blue=ORF Green=Tags(s)

TTTTGTAATACGACTCACTATAGGGCGGCCGGAATTCGTCGACTGGATCCGGTACCGAGGAGATCTGCC
GCC**CGATCGCC**

ATGGCGTCCTCTTCTACTGTGCCTCTGGGATTTCACTATGAAACAAAGTATGTTGTTCTCAGCTACTTGG
GACTCCTCTCTCAAGAGAAGCTGCAAGAGCAACATCTTTCCTCACCCCAAGGGTTCACTAGATATAGC
TTCACAATCTCTGGATCAAGAAATTTTATTTAAAGTTAAACTGAAATTGAAGAAGAGCTAAAATCTCTG
GACAAAGAAATTTCTGAAGCCTTACCAGCACAGGCTTTGACCGTCACACTTCTCCAGTGTTCAGCCCTG
CCAATCCAGAAAGCTCAATGGAAGACTGCTTGGCCATCTTGGAGAAAAAGTGTCCAGGAAGTAAAGA
GCCTCTCCATAAAGCATTGCAAATGCTCCTGAGCCAGGCACTGTGTTTAGTCTTGAGTCAGAGGAGGAGG
AATACCCTGGAATCACTGCAGAAGATAGCAATGACATTTACATCTGCCAGCGACAACCTCTGGACAAGT
CAGTCCCCCAGAGTCTCCAATG

ACGCGTACGCGGCCGCTCGAG - GFP Tag - GTTTAA

Protein Sequence: >RG231955 representing NM_001270734
Red=Cloning site Green=Tags(s)

MASSTVPLGFHYETKYVLSYLGLLSQEKLQEQLSSPQGVQLDIASQSLDQEILLKVKTEIEEELKSL
DKEISEAFTSTGFDRTSPVFPANPESSMEDCLAHLGEKVSQELKEPLHKALQMLLSQALCLVLSQRRR
NTLESLQKIAMTFTSCPATTLDKSVPQSLQL

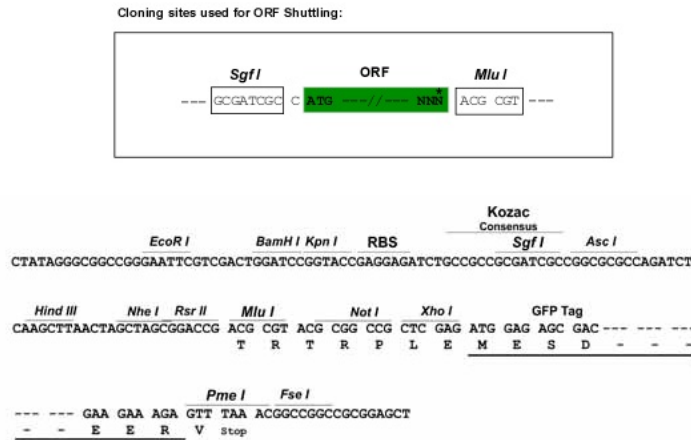
TRTRPLE - GFP Tag - V

Restriction Sites: SgfI-MluI

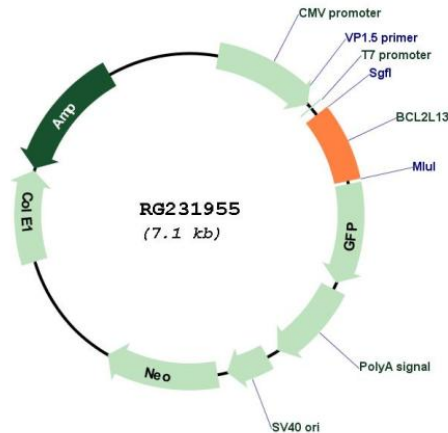


[View online »](#)

Cloning Scheme:



Plasmid Map:



ACCN: NM_001270734

ORF Size: 513 bp

OTI Disclaimer: The molecular sequence of this clone aligns with the gene accession number as a point of reference only. However, individual transcript sequences of the same gene can differ through naturally occurring variations (e.g. polymorphisms), each with its own valid existence. This clone is substantially in agreement with the reference, but a complete review of all prevailing variants is recommended prior to use. [More info](#)

OTI Annotation: This clone was engineered to express the complete ORF with an expression tag. Expression varies depending on the nature of the gene.

Components:	The ORF clone is ion-exchange column purified and shipped in a 2D barcoded Matrix tube containing 10ug of transfection-ready, dried plasmid DNA (reconstitute with 100 ul of water).
Reconstitution Method:	<ol style="list-style-type: none">1. Centrifuge at 5,000xg for 5min.2. Carefully open the tube and add 100ul of sterile water to dissolve the DNA.3. Close the tube and incubate for 10 minutes at room temperature.4. Briefly vortex the tube and then do a quick spin (less than 5000xg) to concentrate the liquid at the bottom.5. Store the suspended plasmid at -20°C. The DNA is stable for at least one year from date of shipping when stored at -20°C.
RefSeq:	<u>NM_001270734.1, NP_001257663.1</u>
RefSeq Size:	4918 bp
RefSeq ORF:	516 bp
Locus ID:	23786
Cytogenetics:	22q11.21
Protein Families:	Druggable Genome, Transmembrane
Gene Summary:	This gene encodes a mitochondrially-localized protein with conserved B-cell lymphoma 2 homology motifs. Overexpression of the encoded protein results in apoptosis. Alternatively spliced transcript variants have been observed for this gene. [provided by RefSeq, Jul 2012]