

Product datasheet for **RG231908**

Kallikrein 15 (KLK15) (NM_001277082) Human Tagged ORF Clone

Product data:

Product Type: Expression Plasmids
Product Name: Kallikrein 15 (KLK15) (NM_001277082) Human Tagged ORF Clone
Tag: TurboGFP
Symbol: KLK15
Synonyms: ACO; HSRNASPH
Mammalian Cell Selection: Neomycin
Vector: pCMV6-AC-GFP (PS100010)
E. coli Selection: Ampicillin (100 ug/mL)
ORF Nucleotide Sequence: >RG231908 representing NM_001277082
Red=Cloning site Blue=ORF Green=Tags(s)

TTTTGTAATACGACTCACTATAGGGCGGCCGGAATTCGTCGACTGGATCCGGTACCGAGGAGATCTGCC
GCC**CGATCGCC**

ATGTGGCTTCTCCTCACTCTCTCCTTCTGCTGGCATCCACAGCCAGGATGGTGACAAGTTGCTGGAAG
GTGACGAGTGTGACCCCACTCCAGCCATGGCAAGTGGCTCTCTACGAGCGTGGACGCTTAACTGTGG
CGCTTCCCTCATCTCCCACTGGGTGCTGTCTGCGGCCACTGCCAAAGCCGTTTCATGAGAGTGC
CTGGGAGAGCACAACTGCGCAAGCGCATGGCCAGAGCAACTACGGACCACGCTCTCGGTCATTCCAC
ACCCGCGCTACGAAGCGCGCAGCCACCGCAACGACATCATGTTGCTGCGCCTAGTCCAGCCCGCAGCCT
GAACCCCAAGGTGCGCCCGCGGTGCTACCCACGCGTTGCCCAACCCGCGGGAGCCTGTGTGGTGTCT
GGCTGGGGCTGGTGTCCACAACGAGCCTGGGACCGCTGGGAGCCCCGGTCAACAAGG

AG**CGGACCG**ACGCGTACGCGGCCGCTCGAG - GFP Tag - GTTTAA

Protein Sequence: >RG231908 representing NM_001277082
Red=Cloning site Green=Tags(s)

MWLLLTLSFLLASTAQDGDKLLLEGDECAPHSQPWQVALYERGRFNCGASLISPHWVLSAAHCQSRFMRVR
LGEHNLKRKRDGPEQLRRTSRVIPRYEARSHRNDIMLLRLVQPARLNPQVRPAVLPTRCPHPGEACVVS
GWGLVSHNEPGTAGSPRSQG

SGPTRRRLE - GFP Tag - V

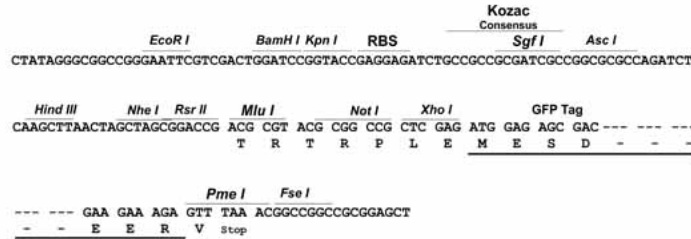
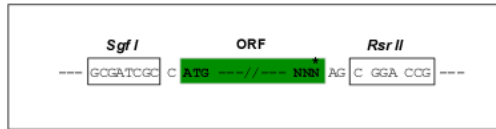
Restriction Sites: Sgfl-RsrII



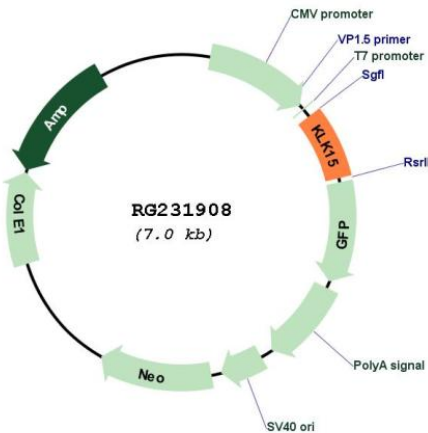
[View online »](#)

Cloning Scheme:

Cloning sites used for ORF Shuttling:



Plasmid Map:



ACCN: NM_001277082

ORF Size: 480 bp

OTI Disclaimer: The molecular sequence of this clone aligns with the gene accession number as a point of reference only. However, individual transcript sequences of the same gene can differ through naturally occurring variations (e.g. polymorphisms), each with its own valid existence. This clone is substantially in agreement with the reference, but a complete review of all prevailing variants is recommended prior to use. [More info](#)

OTI Annotation: This clone was engineered to express the complete ORF with an expression tag. Expression varies depending on the nature of the gene.

Components:	The ORF clone is ion-exchange column purified and shipped in a 2D barcoded Matrix tube containing 10ug of transfection-ready, dried plasmid DNA (reconstitute with 100 ul of water).
Reconstitution Method:	<ol style="list-style-type: none">1. Centrifuge at 5,000xg for 5min.2. Carefully open the tube and add 100ul of sterile water to dissolve the DNA.3. Close the tube and incubate for 10 minutes at room temperature.4. Briefly vortex the tube and then do a quick spin (less than 5000xg) to concentrate the liquid at the bottom.5. Store the suspended plasmid at -20°C. The DNA is stable for at least one year from date of shipping when stored at -20°C.
RefSeq:	<u>NM_001277082.1</u> , <u>NP_001264011.1</u>
RefSeq Size:	1185 bp
RefSeq ORF:	483 bp
Locus ID:	55554
UniProt ID:	<u>Q9H2R5</u>
Cytogenetics:	19q13.33
Protein Families:	Druggable Genome, Protease, Secreted Protein
Gene Summary:	Kallikreins are a subgroup of serine proteases having diverse physiological functions. Growing evidence suggests that many kallikreins are implicated in carcinogenesis and some have potential as novel cancer and other disease biomarkers. This gene is one of the fifteen kallikrein subfamily members located in a cluster on chromosome 19. In prostate cancer, this gene has increased expression, which indicates its possible use as a diagnostic or prognostic marker for prostate cancer. The gene contains multiple polyadenylation sites and alternative splicing results in multiple transcript variants encoding distinct isoforms. [provided by RefSeq, Jul 2008]