

Product datasheet for **RG231840**

IFTAP (NM_001276727) Human Tagged ORF Clone

Product data:

Product Type: Expression Plasmids
Product Name: IFTAP (NM_001276727) Human Tagged ORF Clone
Tag: TurboGFP
Symbol: IFTAP
Synonyms: C11orf74; HEPIS; NWC
Mammalian Cell Selection: Neomycin
Vector: pCMV6-AC-GFP (PS100010)
E. coli Selection: Ampicillin (100 ug/mL)
ORF Nucleotide Sequence: >RG231840 representing NM_001276727
 Red=Cloning site Blue=ORF Green=Tags(s)

TTTTGTAATACGACTCACTATAGGGCGGCCGGAATTCGTCGACTGGATCCGGTACCGAGGAGATCTGCC
 GCC**CGATCGCC**

ATGCTGCCCATATGTCAGGATTGAAAATAATGGATGAAGATCAATTAATCAAAGACGCTTGGATAAAT
 TCCTTAATTGTCATGAGCAAACATATGATGAAGAATTTCTGAACACTTTTACTCATCTTTCACAAGATT
 GCTGCTGCTTCCAGGAGAAGTGGAGCAGGATGTAAGCACCAGCATTCTTCTGTATCCCTTTTGTGGCC
 CAGCCTCCTACCTGTGAAGTGAAGCCAAAGCCAGTGTTAAAAGAATGGACAAACAGACGGAAGAGATAC
 TTGGAGATGAAGTCAACTTTTTCACTTGTATGAAGAATTTGATTATGACAATGTGATGCTAACCTCCAA
 GTTAGTCCTGCAGAGATAGAGAACATCAAAGAGCTATGCAAGCAGCAGAAGAGAAAAGGACACCAGCCCA
 GACTTAGAGAAATCCTGTGAC

ACGCGTACGCGGCCGCTCGAG - GFP Tag - GTTTAA

Protein Sequence: >RG231840 representing NM_001276727
 Red=Cloning site Green=Tags(s)

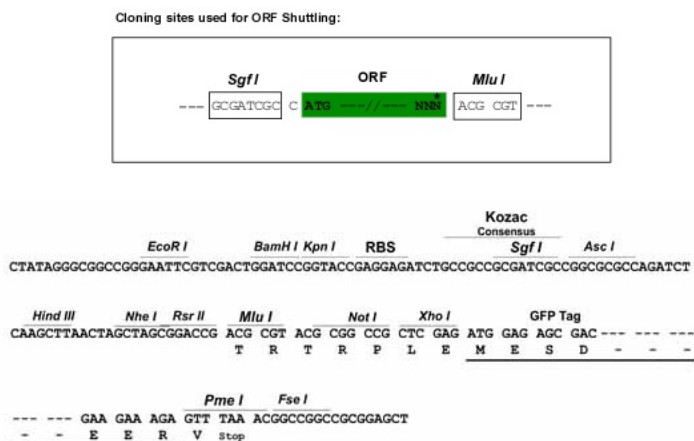
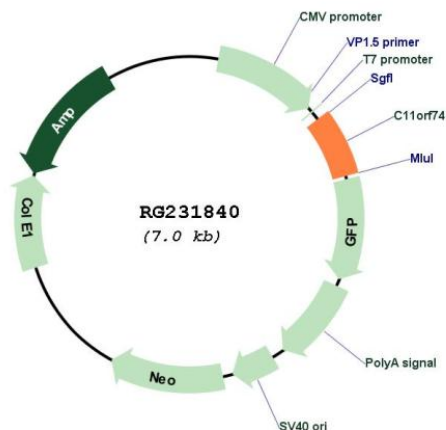
MSAHMSGLEIMDEDQLIKDVLDFLNCHQTYDEEFLNTFTHLSQDLLLLPGEVEQDVSTSIPIPFVA
 QPPTCEVKPKPSVKRMDKQTEEILGDEVQLFSLDEEFDYDNVMLTSKFSPEIENIKELCKQQRKDTSP
 DLEKSCD

TRTRPLE - GFP Tag - V

Restriction Sites: Sgfl-MluI



[View online »](#)

Cloning Scheme:

Plasmid Map:


ACCN: NM_001276727

ORF Size: 441 bp

OTI Disclaimer: The molecular sequence of this clone aligns with the gene accession number as a point of reference only. However, individual transcript sequences of the same gene can differ through naturally occurring variations (e.g. polymorphisms), each with its own valid existence. This clone is substantially in agreement with the reference, but a complete review of all prevailing variants is recommended prior to use. [More info](#)

OTI Annotation: This clone was engineered to express the complete ORF with an expression tag. Expression varies depending on the nature of the gene.

Components:	The ORF clone is ion-exchange column purified and shipped in a 2D barcoded Matrix tube containing 10ug of transfection-ready, dried plasmid DNA (reconstitute with 100 ul of water).
Reconstitution Method:	<ol style="list-style-type: none">1. Centrifuge at 5,000xg for 5min.2. Carefully open the tube and add 100ul of sterile water to dissolve the DNA.3. Close the tube and incubate for 10 minutes at room temperature.4. Briefly vortex the tube and then do a quick spin (less than 5000xg) to concentrate the liquid at the bottom.5. Store the suspended plasmid at -20°C. The DNA is stable for at least one year from date of shipping when stored at -20°C.
RefSeq:	<u>NM_001276727.1, NP_001263656.1</u>
RefSeq Size:	689 bp
RefSeq ORF:	444 bp
Locus ID:	119710
UniProt ID:	<u>Q86VG3</u>
Cytogenetics:	11p12
Gene Summary:	This gene encodes a protein that was identified as a cellular interacting partner of non-structural protein 10 of the severe acute respiratory syndrome coronavirus (SARS-CoV). The encoded protein may function as a negative regulator of transcription. There is a pseudogene for this gene on chromosome 1. Alternative splicing results in multiple transcript variants. [provided by RefSeq, Mar 2013]