

Product datasheet for **RG231745**

KCNE1 (NM_001270402) Human Tagged ORF Clone

Product data:

Product Type: Expression Plasmids
Product Name: KCNE1 (NM_001270402) Human Tagged ORF Clone
Tag: TurboGFP
Symbol: KCNE1
Synonyms: ISK; JLNS; JLNS2; LQT2/5; LQT5; MinK
Mammalian Cell Selection: Neomycin
Vector: pCMV6-AC-GFP (PS100010)
E. coli Selection: Ampicillin (100 ug/mL)
ORF Nucleotide Sequence: >RG231745 representing NM_001270402
 Red=Cloning site Blue=ORF Green=Tags(s)

TTTTGTAATACGACTCACTATAGGGCGGCCGGAATTCGTCGACTGGATCCGGTACCGAGGAGATCTGCC
 GCC**CGATCGCC**

ATGATCCTGTCTAACACCACAGCGGTGACGCCCTTCTGACCAAGCTGTGGCAGGAGACAGTTCAGCAGG
 GTGGCAACATGTCGGCCTGGCCCGCAGGTCACCCCGCAGCAGTGACGGCAAGCTGGAGGCCCTCTACGT
 CCTCATGGTACTGGGATTCTTCGGCTTCTCACCCCTGGGCATCATGCTGAGCTACATCCGCTCCAAGAAG
 CTGGAGCACTCGAACGACCCATTCAACGTCTACATCGAGTCCGATGCCTGGCAAGAGAAGGACAAGGCCT
 ATGTCCAGGCCCGGTCCTGGAGAGCTACAGGTCGTGCTATGTCGTTGAAAACCATCTGGCCATAGAACA
 ACCCAACACACACCTTCTGAGACGAAGCCTTCCCCA

ACGCGTACGCGGCCGCTCGAG - GFP Tag - GTTTAA

Protein Sequence: >RG231745 representing NM_001270402
 Red=Cloning site Green=Tags(s)

MILSNTTAVTPFLTKLWQETVQQGNMSGLARRSPRSSDGKLEALYVLMVLGFFGFFTLGIMLSYIRSKK
 LEHSNDPFNVYIESDAWQEKDKAYVQARVLESYRSCYVVENHLAIEQPNTLHPETKPSP

TRTRPLE - GFP Tag - V

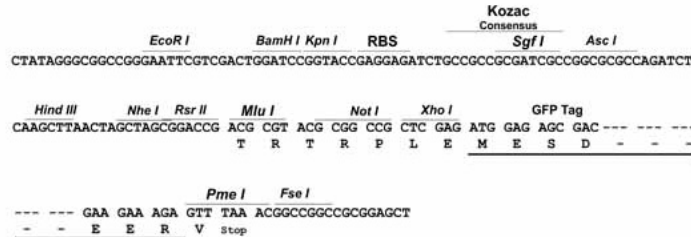
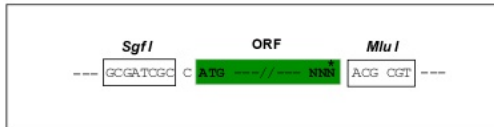
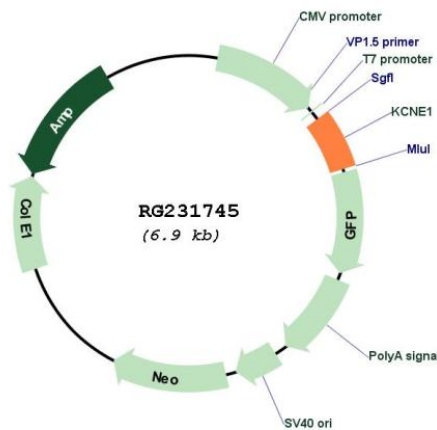
Restriction Sites: Sgfl-MluI



[View online »](#)

Cloning Scheme:

Cloning sites used for ORF Shutting:


Plasmid Map:

ACCN: NM_001270402

ORF Size: 387 bp

OTI Disclaimer: The molecular sequence of this clone aligns with the gene accession number as a point of reference only. However, individual transcript sequences of the same gene can differ through naturally occurring variations (e.g. polymorphisms), each with its own valid existence. This clone is substantially in agreement with the reference, but a complete review of all prevailing variants is recommended prior to use. [More info](#)

OTI Annotation:	This clone was engineered to express the complete ORF with an expression tag. Expression varies depending on the nature of the gene.
Components:	The ORF clone is ion-exchange column purified and shipped in a 2D barcoded Matrix tube containing 10ug of transfection-ready, dried plasmid DNA (reconstitute with 100 ul of water).
Reconstitution Method:	<ol style="list-style-type: none">1. Centrifuge at 5,000xg for 5min.2. Carefully open the tube and add 100ul of sterile water to dissolve the DNA.3. Close the tube and incubate for 10 minutes at room temperature.4. Briefly vortex the tube and then do a quick spin (less than 5000xg) to concentrate the liquid at the bottom.5. Store the suspended plasmid at -20°C. The DNA is stable for at least one year from date of shipping when stored at -20°C.
RefSeq:	NM_001270402.2
RefSeq Size:	3350 bp
RefSeq ORF:	390 bp
Locus ID:	3753
UniProt ID:	P15382
Cytogenetics:	21q22.12
Protein Families:	Druggable Genome, Ion Channels: Other, Transmembrane
Gene Summary:	The product of this gene belongs to the potassium channel KCNE family. Potassium ion channels are essential to many cellular functions and show a high degree of diversity, varying in their electrophysiologic and pharmacologic properties. This gene encodes a transmembrane protein known to associate with the product of the KVLQT1 gene to form the delayed rectifier potassium channel. Mutation in this gene are associated with both Jervell and Lange-Nielsen and Romano-Ward forms of long-QT syndrome. Alternatively spliced transcript variants encoding the same protein have been identified. [provided by RefSeq, Jul 2008]