

## Product datasheet for **RG231727**

### **ATF3 (NM\_001206488) Human Tagged ORF Clone**

#### Product data:

**Product Type:** Expression Plasmids  
**Product Name:** ATF3 (NM\_001206488) Human Tagged ORF Clone  
**Tag:** TurboGFP  
**Symbol:** ATF3  
**Mammalian Cell Selection:** Neomycin  
**Vector:** pCMV6-AC-GFP (PS100010)  
**E. coli Selection:** Ampicillin (100 ug/mL)  
**ORF Nucleotide Sequence:** >RG231727 representing NM\_001206488  
Red=Cloning site Blue=ORF Green=Tags(s)

TTTTGTAATACGACTCACTATAGGGCGGCCGGAATTCGTCGACTGGATCCGGTACCGAGGAGATCTGCC  
GCC**CGATCGCC**

ATGTCCTCTGCGCTGGAATCAGTCACTGTCAGCGACAGACCCCTCGGGGTGTCCATCACAAAAGCCGAGG  
TAGCCCCGAAGAAGATGAAAGGAAAAAGAGGCGACGAGAAGAAATAAGATTGCAGCTGCAAAGTGCCG  
AAACAAGAAGAAGGAGAAGACGGAGTGCCTGCAGAAAGAGTCGGAGAAGCTGGAAAGTGTGAATGCTGAA  
CTGAAGGCTCAGATTGAGGAGCTCAAGAACGAGAAGCAGCATTTGATATACATGCTCAACCTTCATCGGC  
CCACGTGATTGTCCGGGCTCAGAATGGGAGGACTCCAGAAGATGAGAGAAACCTTTTATCCAACAGAT  
AAAAGAAGGAACATTGCAGAGC

**ACGCGT**ACGCGGCCGCTCGAG - GFP Tag - GTTTAA

**Protein Sequence:** >RG231727 representing NM\_001206488  
Red=Cloning site Green=Tags(s)

MSSALESVTVSDRPLGVSITKAEVAPEEDERKKRRRRRNKIAAAKCRNKKKEKTECLQKESEKLESVNAE  
LKAQIEELKNEKQHLIYMLNLHRPTCIVRAQNGRTPEDERNLFIQQIKEGTLQS

**TRTRPLE** - GFP Tag - V

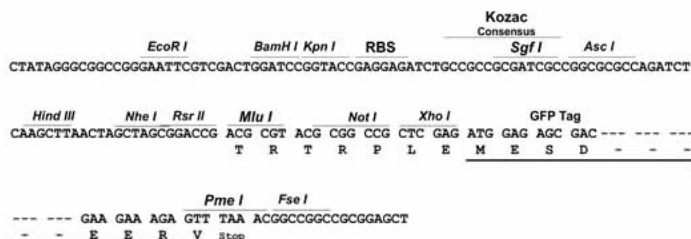
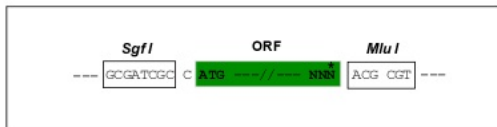
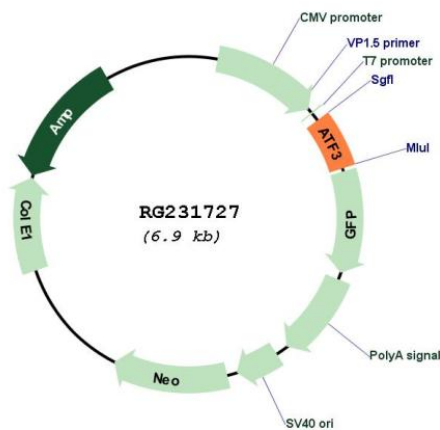
**Restriction Sites:** Sgfl-MluI



[View online »](#)

**Cloning Scheme:**

Cloning sites used for ORF Shutting:


**Plasmid Map:**

**ACCN:**

NM\_001206488

**ORF Size:**

372 bp

**OTI Disclaimer:**

The molecular sequence of this clone aligns with the gene accession number as a point of reference only. However, individual transcript sequences of the same gene can differ through naturally occurring variations (e.g. polymorphisms), each with its own valid existence. This clone is substantially in agreement with the reference, but a complete review of all prevailing variants is recommended prior to use. [More info](#)

<b>OTI Annotation:</b>	This clone was engineered to express the complete ORF with an expression tag. Expression varies depending on the nature of the gene.
<b>Components:</b>	The ORF clone is ion-exchange column purified and shipped in a 2D barcoded Matrix tube containing 10ug of transfection-ready, dried plasmid DNA (reconstitute with 100 ul of water).
<b>Reconstitution Method:</b>	<ol style="list-style-type: none"><li>1. Centrifuge at 5,000xg for 5min.</li><li>2. Carefully open the tube and add 100ul of sterile water to dissolve the DNA.</li><li>3. Close the tube and incubate for 10 minutes at room temperature.</li><li>4. Briefly vortex the tube and then do a quick spin (less than 5000xg) to concentrate the liquid at the bottom.</li><li>5. Store the suspended plasmid at -20°C. The DNA is stable for at least one year from date of shipping when stored at -20°C.</li></ol>
<b>RefSeq:</b>	<a href="#">NM_001206488.3</a>
<b>RefSeq Size:</b>	2065 bp
<b>RefSeq ORF:</b>	375 bp
<b>Locus ID:</b>	467
<b>UniProt ID:</b>	<a href="#">P18847</a>
<b>Cytogenetics:</b>	1q32.3
<b>Protein Families:</b>	Transcription Factors
<b>Gene Summary:</b>	This gene encodes a member of the mammalian activation transcription factor/cAMP responsive element-binding (CREB) protein family of transcription factors. This gene is induced by a variety of signals, including many of those encountered by cancer cells, and is involved in the complex process of cellular stress response. Multiple transcript variants encoding different isoforms have been found for this gene. It is possible that alternative splicing of this gene may be physiologically important in the regulation of target genes. [provided by RefSeq, Apr 2011]