

## Product datasheet for **RG231722**

### **PDCD6 (NM\_001267557) Human Tagged ORF Clone**

#### Product data:

**Product Type:** Expression Plasmids  
**Product Name:** PDCD6 (NM\_001267557) Human Tagged ORF Clone  
**Tag:** TurboGFP  
**Symbol:** PDCD6  
**Synonyms:** ALG-2; ALG2; PEF1B  
**Mammalian Cell Selection:** Neomycin  
**Vector:** pCMV6-AC-GFP (PS100010)  
**E. coli Selection:** Ampicillin (100 ug/mL)  
**ORF Nucleotide Sequence:** >RG231722 representing NM\_001267557  
 Red=Cloning site Blue=ORF Green=Tags(s)

TTTTGTAATACGACTCACTATAGGGCGGCCGGAATTCGTCGACTGGATCCGGTACCGAGGAGATCTGCC  
 GCC**CGATCGCC**

ATGGCCGCTACTCTTACCGCCCCGGCCCTGGGGCCGGCCCTGGGCCTGCTGCAGGCGGGCGCTGCCGG  
 ACCAGAGCTTCTGTGGAACGTTTTCCAGAGGGTCGATAAAGACAGGAGTGGAGTGATATCAGACACCGA  
 GCTTCAGCAAGCTCTCTCAACGGCTACCGGCTCTCTGACCAGTCCACGACATCCTCATTCGAAAGTTT  
 GACAGGCAGGGACGGGGCAGATTGCCTTCGACGACTTCATCCAGGGCTGCATCGTCCTGCAGAGGTTGA  
 CGGATATATTCAGACGTTACGACACGGATCAGGACGGCTGGATTCAGGTGTCGTACGAACAGTACCTGTC  
 CATGGTCTTCAGTATCGTA

**ACGCGT**ACGCGGCCGCTCGAG - GFP Tag - GTTTAA

**Protein Sequence:** >RG231722 representing NM\_001267557  
 Red=Cloning site Green=Tags(s)  
 MAAYSYRPGPGAGPGPAAGAALPDQSFLWNVFRVDRSGVISDTELQQALSNGYRLSDQFHDILIRKF  
 DRQGRGQIAFDFFIQGCIVLQRLTDIFRRYDTDQDQGWIQVSYEQYLSMVF SIV

**TRTRPLE** - GFP Tag - V

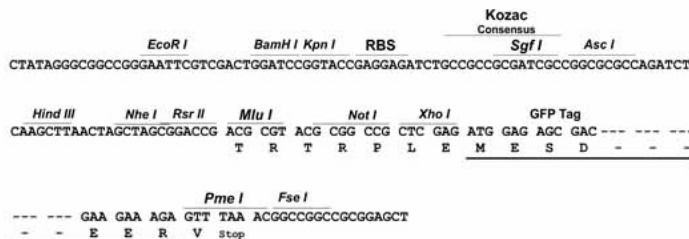
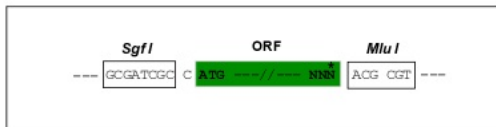
**Restriction Sites:** Sgfl-MluI



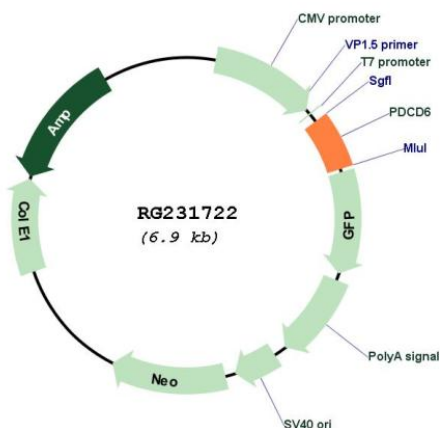
[View online »](#)

Cloning Scheme:

Cloning sites used for ORF Shutting:



Plasmid Map:



ACCN: NM\_001267557

ORF Size: 369 bp

OTI Disclaimer: The molecular sequence of this clone aligns with the gene accession number as a point of reference only. However, individual transcript sequences of the same gene can differ through naturally occurring variations (e.g. polymorphisms), each with its own valid existence. This clone is substantially in agreement with the reference, but a complete review of all prevailing variants is recommended prior to use. [More info](#)

<b>OTI Annotation:</b>	This clone was engineered to express the complete ORF with an expression tag. Expression varies depending on the nature of the gene.
<b>Components:</b>	The ORF clone is ion-exchange column purified and shipped in a 2D barcoded Matrix tube containing 10ug of transfection-ready, dried plasmid DNA (reconstitute with 100 ul of water).
<b>Reconstitution Method:</b>	<ol style="list-style-type: none"><li>1. Centrifuge at 5,000xg for 5min.</li><li>2. Carefully open the tube and add 100ul of sterile water to dissolve the DNA.</li><li>3. Close the tube and incubate for 10 minutes at room temperature.</li><li>4. Briefly vortex the tube and then do a quick spin (less than 5000xg) to concentrate the liquid at the bottom.</li><li>5. Store the suspended plasmid at -20°C. The DNA is stable for at least one year from date of shipping when stored at -20°C.</li></ol>
<b>RefSeq:</b>	<u><a href="#">NM_001267557.1</a></u> , <u><a href="#">NP_001254486.1</a></u>
<b>RefSeq Size:</b>	947 bp
<b>RefSeq ORF:</b>	372 bp
<b>Locus ID:</b>	10016
<b>UniProt ID:</b>	<u><a href="#">O75340</a></u>
<b>Cytogenetics:</b>	5p15.33
<b>Protein Families:</b>	Druggable Genome
<b>Gene Summary:</b>	This gene encodes a calcium-binding protein belonging to the penta-EF-hand protein family. Calcium binding is important for homodimerization and for conformational changes required for binding to other protein partners. This gene product participates in T cell receptor-, Fas-, and glucocorticoid-induced programmed cell death. In mice deficient for this gene product, however, apoptosis was not blocked suggesting this gene product is functionally redundant. Alternatively spliced transcript variants encoding multiple isoforms have been observed for this gene, and a pseudogene of this gene is also located on the short arm of chromosome 5. [provided by RefSeq, May 2012]