

Product datasheet for **RG231721**

CD28 (NM_001243077) Human Tagged ORF Clone

Product data:

Product Type: Expression Plasmids
Product Name: CD28 (NM_001243077) Human Tagged ORF Clone
Tag: TurboGFP
Symbol: CD28
Synonyms: Tp44
Mammalian Cell Selection: Neomycin
Vector: pCMV6-AC-GFP (PS100010)
E. coli Selection: Ampicillin (100 ug/mL)
ORF Nucleotide Sequence: >RG231721 representing NM_001243077
Red=Cloning site **Blue**=ORF **Green**=Tags(s)

TTTTGTAATACGACTCACTATAGGGCGGCCGGAATTCGTCGACTGGATCCGGTACCGAGGAGATCTGCC
GCC**CGATCGCC**

ATGCTCAGGCTGCTCTTGGCTCTCAACTTATCCCTTCAATTCAAGTAACAGGAAACAAGATTTGGTGA
AGCAGTCGCCATGCTTGTAGCGTACGACAATGCGGTCAACCTTAGCTGGAAACACCTTTGTCCAAGTCC
CCTATTTCCGGACCTTCTAAGCCCTTTGGGTGCTGGTGGTGGTGGTGGAGTCTGGCTTGTATAGC
TTGCTAGTAACAGTGGCCTTTATTATTTCTGGGTGAGGAGTAAGAGGAGCAGGCTCTGCACAGTGACT
ACATGAACATGACTCCCCGCCGCCCGGCCACCCGCAAGCATTACCAGCCCTATGCCCCACCACGCGA
CTTCGCAGCCTATCGCTCC

ACGCGTACGCGGCCGCTCGAG - GFP Tag - GTTTAA

Protein Sequence: >RG231721 representing NM_001243077
Red=Cloning site **Green**=Tags(s)
MLRLLLALNLFPSIQVTGNKILVKQSPMLVAYDNAVNLWKHLCPSPFPGPSKPFVWLVVVGGVLACYS
LLVTVAFIIFWVRSKRSRLLHSDYMNMTPRRPGPTRKHYPYAPPRDFAAYRS

TRTRPLE - GFP Tag - V

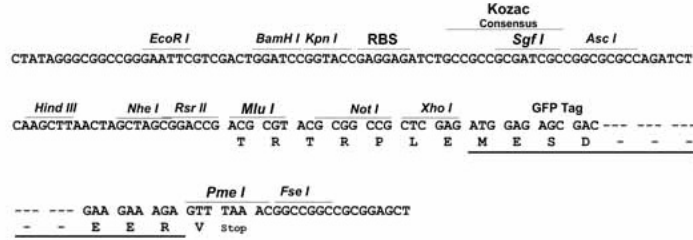
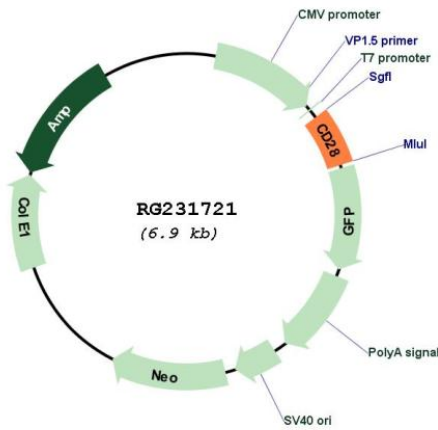
Restriction Sites: Sgfl-MluI



[View online »](#)

Cloning Scheme:

Cloning sites used for ORF Shutting:

**Plasmid Map:**

ACCN: NM_001243077
ORF Size: 369 bp

OTI Disclaimer:	<p>Due to the inherent nature of this plasmid, standard methods to replicate additional amounts of DNA in E. coli are highly likely to result in mutations and/or rearrangements. Therefore, OriGene does not guarantee the capability to replicate this plasmid DNA. Additional amounts of DNA can be purchased from OriGene with batch-specific, full-sequence verification at a reduced cost. Please contact our customer care team at custsupport@origene.com or by calling 301.340.3188 option 3 for pricing and delivery.</p> <p>The molecular sequence of this clone aligns with the gene accession number as a point of reference only. However, individual transcript sequences of the same gene can differ through naturally occurring variations (e.g. polymorphisms), each with its own valid existence. This clone is substantially in agreement with the reference, but a complete review of all prevailing variants is recommended prior to use. More info</p>
OTI Annotation:	<p>This clone was engineered to express the complete ORF with an expression tag. Expression varies depending on the nature of the gene.</p>
Components:	<p>The ORF clone is ion-exchange column purified and shipped in a 2D barcoded Matrix tube containing 10ug of transfection-ready, dried plasmid DNA (reconstitute with 100 ul of water).</p>
Reconstitution Method:	<ol style="list-style-type: none">1. Centrifuge at 5,000xg for 5min.2. Carefully open the tube and add 100ul of sterile water to dissolve the DNA.3. Close the tube and incubate for 10 minutes at room temperature.4. Briefly vortex the tube and then do a quick spin (less than 5000xg) to concentrate the liquid at the bottom.5. Store the suspended plasmid at -20°C. The DNA is stable for at least one year from date of shipping when stored at -20°C.
RefSeq:	NM_001243077.2
RefSeq Size:	4609 bp
RefSeq ORF:	372 bp
Locus ID:	940
UniProt ID:	P10747
Cytogenetics:	2q33.2
Protein Families:	Druggable Genome, Transmembrane
Protein Pathways:	Allograft rejection, Autoimmune thyroid disease, Cell adhesion molecules (CAMs), Graft-versus-host disease, Systemic lupus erythematosus, T cell receptor signaling pathway, Type I diabetes mellitus, Viral myocarditis
Gene Summary:	<p>The protein encoded by this gene is essential for T-cell proliferation and survival, cytokine production, and T-helper type-2 development. Several alternatively spliced transcript variants encoding different isoforms have been found for this gene.[provided by RefSeq, Jul 2011]</p>