

Product datasheet for **RG231698**

ATF7 (NM_001206682) Human Tagged ORF Clone

Product data:

Product Type: Expression Plasmids
Product Name: ATF7 (NM_001206682) Human Tagged ORF Clone
Tag: TurboGFP
Symbol: ATF7
Synonyms: ATFA
Mammalian Cell Selection: Neomycin
Vector: pCMV6-AC-GFP (PS100010)
E. coli Selection: Ampicillin (100 ug/mL)
ORF Nucleotide Sequence: >RG231698 representing NM_001206682
Red=Cloning site **Blue**=ORF **Green**=Tags(s)

TTTTGTAATACGACTCACTATAGGGCGGCCGGAATTCGTCGACTGGATCCGGTACCGAGGAGATCTGCC
GCC**CGATCGCC**

ATGGGAGACGACAGACCGTTTGTGTGCAATGCCCGGGCTGTGGACAGAGATTTACAAACGAGGACCACC
TGGCAGTTCATAAACACAAGCATGAGATGACATTGAAATTTGGCCAGCCCGAAGTACTCAGTCATCAT
TGCAGATCAAACGCCTACTCCAAGTATTCTGAAGAACTGTGAGGAGGTGGGACTCTTCAATGAACTA
GCTAGCTCCTTTGAACATGAATTCAAGAAAGCTGCAGATGAGGATGAGAAAAAGCAAGAAGCAGGACTG
TTGCCAAAAAAGTGGTGTATTAGACCTAGGCTATTTTTATTGTGCTTTGGGATAATTTCTTAATTGG
T

ACGCGTACGCGGCCGCTCGAG - GFP Tag - GTTTAA

Protein Sequence: >RG231698 representing NM_001206682
Red=Cloning site **Green**=Tags(s)
MGDDRRPFVCNAPGCGQRF TNEDHLAVHKHKHEMTLKFGPARTDSVIIADQTPTRFLKNCEEVGLFNEL
ASSFEHEFKAADEDEKKARSRTVAKKLVVFRPRLFLLCFGIIFLIG

TRTRPLE - GFP Tag - V

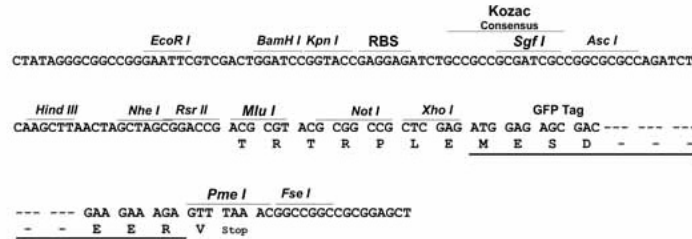
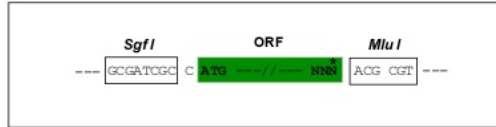
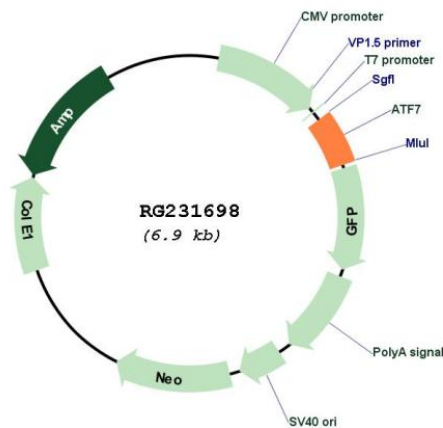
Restriction Sites: SgfI-MluI



[View online »](#)

Cloning Scheme:

Cloning sites used for ORF Shutting:


Plasmid Map:

ACCN: NM_001206682

ORF Size: 351 bp

OTI Disclaimer: The molecular sequence of this clone aligns with the gene accession number as a point of reference only. However, individual transcript sequences of the same gene can differ through naturally occurring variations (e.g. polymorphisms), each with its own valid existence. This clone is substantially in agreement with the reference, but a complete review of all prevailing variants is recommended prior to use. [More info](#)

OTI Annotation:	This clone was engineered to express the complete ORF with an expression tag. Expression varies depending on the nature of the gene.
Components:	The ORF clone is ion-exchange column purified and shipped in a 2D barcoded Matrix tube containing 10ug of transfection-ready, dried plasmid DNA (reconstitute with 100 ul of water).
Reconstitution Method:	<ol style="list-style-type: none">1. Centrifuge at 5,000xg for 5min.2. Carefully open the tube and add 100ul of sterile water to dissolve the DNA.3. Close the tube and incubate for 10 minutes at room temperature.4. Briefly vortex the tube and then do a quick spin (less than 5000xg) to concentrate the liquid at the bottom.5. Store the suspended plasmid at -20°C. The DNA is stable for at least one year from date of shipping when stored at -20°C.
RefSeq:	NM_001206682.1 , NP_001193611.1
RefSeq Size:	867 bp
RefSeq ORF:	354 bp
Locus ID:	11016
UniProt ID:	P17544
Cytogenetics:	12q13.13
Protein Families:	Transcription Factors
Gene Summary:	Plays important functions in early cell signaling. Binds the cAMP response element (CRE) (consensus: 5'-GTGACGT[AG][AG]-3'), a sequence present in many viral and cellular promoters. Activator of the NF-ELAM1/delta-A site of the E-selectin promoter. Has no intrinsic transcriptional activity, but activates transcription on formation of JUN or FOS heterodimers. Also can bind TRE promoter sequences when heterodimerized with members of the JUN family.[UniProtKB/Swiss-Prot Function]