

Product datasheet for **RG231676**

Epigen (EPGN) (NM_001270990) Human Tagged ORF Clone

Product data:

Product Type: Expression Plasmids
Product Name: Epigen (EPGN) (NM_001270990) Human Tagged ORF Clone
Tag: TurboGFP
Symbol: EPGN
Synonyms: ALGV3072; EPG; PRO9904
Mammalian Cell Selection: Neomycin
Vector: pCMV6-AC-GFP (PS100010)
E. coli Selection: Ampicillin (100 ug/mL)
ORF Nucleotide Sequence: >RG231676 representing NM_001270990
Red=Cloning site Blue=ORF Green=Tags(s)

TTTTGTAATACGACTCACTATAGGGCGCCGGAATTCGTCGACTGGATCCGGTACCGAGGAGATCTGCC
GCC**CGATCGCC**

ATGGCTTTGGGAGTTCCAATATCAGTCTATCTTTTATTCAACGCAATGACAGCACTGACCGAAGAGGCAG
CCGTGACTGTAACACCTCCAATCACAGCCAGCAAGGTAAGTGGACAGTTAACAAAACAGAAGCTGACAA
CATAGAAGGACCCATAGCCTTGAAGTTCTCACACCTTTGCCTGGAAGATCATAACAGTTACTGCATCAAC
GGTGCTTGTGCATTCCACCATGAGCTAGAGAAAGCCATCTGCAGGTGTTTACTGGTTACTGGAGAAA
GGTGTCTAAAATTGAAATCGCCTTACAATGTCTGTTCTGGAGAAAGACGACCACTG

ACGCGTACGCGGCCGCTCGAG - GFP Tag - GTTTAA

Protein Sequence: >RG231676 representing NM_001270990
Red=Cloning site Green=Tags(s)
MALGVPIISVYLLFNAMTALTEEAAVTVTPPITAQQGNWTVNKTEADNIEGPIALKFSHLCLEDHNSYCIN
GACAFHHELEKAIICRCFTGYTGERCLKLSPYNVCSGERRPL

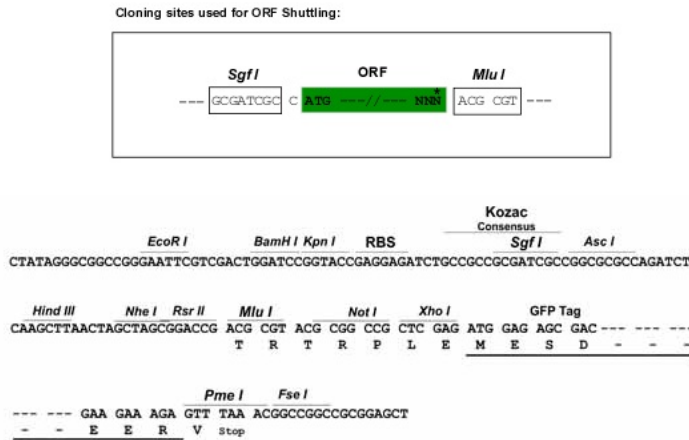
TRTRPLE - GFP Tag - V

Restriction Sites: Sgfl-MluI

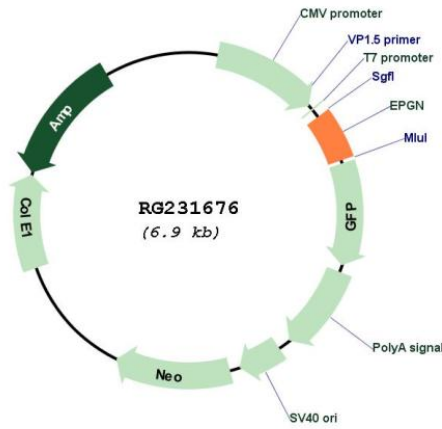


[View online »](#)

Cloning Scheme:



Plasmid Map:



ACCN: NM_001270990

ORF Size: 336 bp

OTI Disclaimer: The molecular sequence of this clone aligns with the gene accession number as a point of reference only. However, individual transcript sequences of the same gene can differ through naturally occurring variations (e.g. polymorphisms), each with its own valid existence. This clone is substantially in agreement with the reference, but a complete review of all prevailing variants is recommended prior to use. [More info](#)

| | |
|-------------------------------|------------------------------------------------------------------------------------------------------------------------------------------------------------------------------------------------------------------------------------------------------------------------------------------------------------------------------------------------------------------------------------------------------------------------------------------------------------------------------------------------------------------------------------------------------|
| OTI Annotation: | This clone was engineered to express the complete ORF with an expression tag. Expression varies depending on the nature of the gene. |
| Components: | The ORF clone is ion-exchange column purified and shipped in a 2D barcoded Matrix tube containing 10ug of transfection-ready, dried plasmid DNA (reconstitute with 100 ul of water). |
| Reconstitution Method: | <ol style="list-style-type: none">1. Centrifuge at 5,000xg for 5min.2. Carefully open the tube and add 100ul of sterile water to dissolve the DNA.3. Close the tube and incubate for 10 minutes at room temperature.4. Briefly vortex the tube and then do a quick spin (less than 5000xg) to concentrate the liquid at the bottom.5. Store the suspended plasmid at -20°C. The DNA is stable for at least one year from date of shipping when stored at -20°C. |
| RefSeq: | NM_001270990.2 |
| RefSeq Size: | 2569 bp |
| RefSeq ORF: | 339 bp |
| Locus ID: | 255324 |
| UniProt ID: | Q6UW88 |
| Cytogenetics: | 4q13.3 |
| Protein Families: | Transmembrane |
| Gene Summary: | The protein encoded by this gene is a member of the epidermal growth factor family. Members of this family are ligands for the epidermal growth factor receptor and play a role in cell survival, proliferation and migration. This protein has been reported to have high mitogenic activity but low affinity for its receptor. Expression of this transcript and protein have been reported in cancer specimens of the breast, bladder, and prostate. Alternative splicing results in multiple transcript variants. [provided by RefSeq, Aug 2012] |