

Product datasheet for **RG231549**

Bim (BCL2L11) (NM_138625) Human Tagged ORF Clone

Product data:

Product Type: Expression Plasmids
Product Name: Bim (BCL2L11) (NM_138625) Human Tagged ORF Clone
Tag: TurboGFP
Symbol: BCL2L11
Synonyms: BAM; BIM; BOD
Mammalian Cell Selection: Neomycin
Vector: pCMV6-AC-GFP (PS100010)
E. coli Selection: Ampicillin (100 ug/mL)
ORF Nucleotide Sequence: >RG231549 representing NM_138625
Red=Cloning site **Blue**=ORF **Green**=Tags(s)

TTTTGTAATACGACTCACTATAGGGCGCCGGGAATTCGTCGACTGGATCCGGTACCGAGGAGATCTGCC
GCC**CGATCGCC**

ATGGCAAAGCAACCTTCTGATGTAAGTTCTGAGTGTGACCGAGAAGGTAGACAATTGCAGCCTGCGGAGA
GGCCTCCCAGCTCAGACCTGGGGCCCCTACCTCCCTACAGACAGAGCCACAAGTCTCACTCTGTCACCC
AGGCTGGAGTGCCTGGTGGATCTTGGCTCACTGCAACCTCCAAGTCAAGCGTTCTCCTG
CCTCAGCCTCCAAG

ACGCGTACGCGGCCGCTCGAG - GFP Tag - GTTTAA

Protein Sequence: >RG231549 representing NM_138625
Red=Cloning site **Green**=Tags(s)

MAKQPSDVSSECDREGRQLQPAERPPQLRPGAPTSLQTEPQVSLCHPGWSALVRSWLTATSNSQVQAVLL
PQPPK

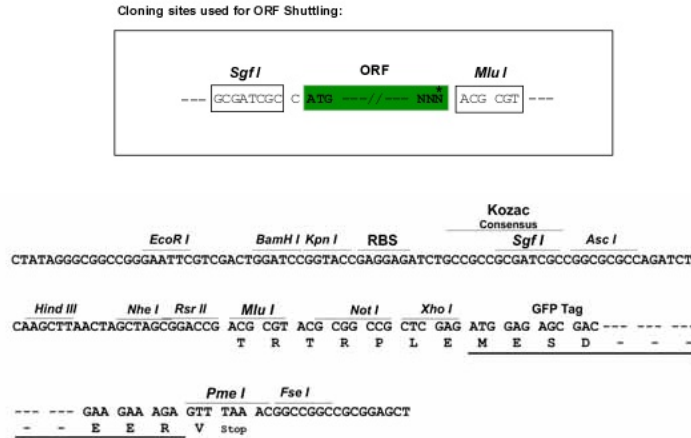
TRTRPLE - GFP Tag - V

Restriction Sites: SgfI-MluI

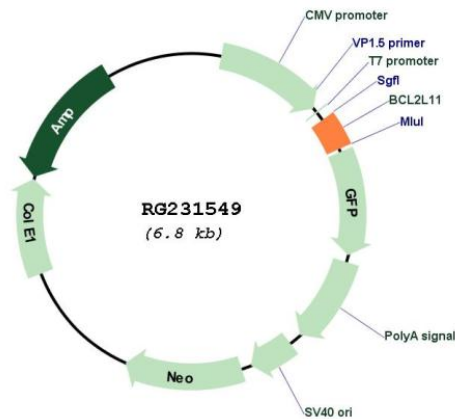


[View online »](#)

Cloning Scheme:



Plasmid Map:



ACCN: NM_138625

ORF Size: 225 bp

OTI Disclaimer: The molecular sequence of this clone aligns with the gene accession number as a point of reference only. However, individual transcript sequences of the same gene can differ through naturally occurring variations (e.g. polymorphisms), each with its own valid existence. This clone is substantially in agreement with the reference, but a complete review of all prevailing variants is recommended prior to use. [More info](#)

OTI Annotation:	This clone was engineered to express the complete ORF with an expression tag. Expression varies depending on the nature of the gene.
Components:	The ORF clone is ion-exchange column purified and shipped in a 2D barcoded Matrix tube containing 10ug of transfection-ready, dried plasmid DNA (reconstitute with 100 ul of water).
Reconstitution Method:	<ol style="list-style-type: none">1. Centrifuge at 5,000xg for 5min.2. Carefully open the tube and add 100ul of sterile water to dissolve the DNA.3. Close the tube and incubate for 10 minutes at room temperature.4. Briefly vortex the tube and then do a quick spin (less than 5000xg) to concentrate the liquid at the bottom.5. Store the suspended plasmid at -20°C. The DNA is stable for at least one year from date of shipping when stored at -20°C.
RefSeq:	NM_138625.4
RefSeq Size:	4952 bp
RefSeq ORF:	228 bp
Locus ID:	10018
UniProt ID:	O43521
Cytogenetics:	2q13
Protein Families:	Druggable Genome
Gene Summary:	The protein encoded by this gene belongs to the BCL-2 protein family. BCL-2 family members form hetero- or homodimers and act as anti- or pro-apoptotic regulators that are involved in a wide variety of cellular activities. The protein encoded by this gene contains a Bcl-2 homology domain 3 (BH3). It has been shown to interact with other members of the BCL-2 protein family and to act as an apoptotic activator. The expression of this gene can be induced by nerve growth factor (NGF), as well as by the forkhead transcription factor FKHR-L1, which suggests a role of this gene in neuronal and lymphocyte apoptosis. Transgenic studies of the mouse counterpart suggested that this gene functions as an essential initiator of apoptosis in thymocyte-negative selection. Several alternatively spliced transcript variants of this gene have been identified. [provided by RefSeq, Jun 2013]