

Product datasheet for **RG231536**

PDCD6 (NM_001267559) Human Tagged ORF Clone

Product data:

Product Type: Expression Plasmids
Product Name: PDCD6 (NM_001267559) Human Tagged ORF Clone
Tag: TurboGFP
Symbol: PDCD6
Synonyms: ALG-2; ALG2; PEF1B
Mammalian Cell Selection: Neomycin
Vector: pCMV6-AC-GFP (PS100010)
E. coli Selection: Ampicillin (100 ug/mL)
ORF Nucleotide Sequence: >RG231536 representing NM_001267559
Red=Cloning site **Blue**=ORF **Green**=Tags(s)

TTTTGTAATACGACTCACTATAGGGCGGCCGGAATTCGTCGACTGGATCCGGTACCGAGGAGATCTGCC
GCC**CGATCGCC**

ATGGCCGCTACTCTTACCGCCCCGGCCCTGGGGCCGGCCCTGGGCCTGCTGCAGGCGGGCGCTGCCGG
ACCAGAGCTTCTGTGGAACGTTTTCCAGAGGGTCGATAAAGACAGGAGTGGAGTGATATCAGACACCGA
GCTTCAGCAAGCTCTCTCAACGGCACGTGGACTCCCTTAATCCAGTGACTGTCAGGTCGATCATA

ACGCGTACGCGGCCGCTCGAG - GFP Tag - GTTTAA

Protein Sequence: >RG231536 representing NM_001267559
Red=Cloning site **Green**=Tags(s)

MAAYSYPGPGAGPGAAGAALPDQSFLWNVFRVDRSGVISDTELQQALSNGTWTWPFNPVTVRSII

TRTRPLE - GFP Tag - V

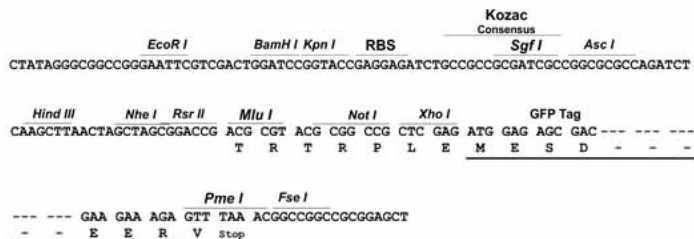
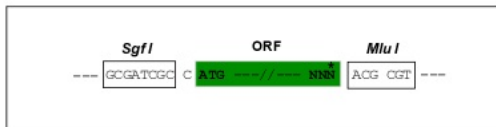
Restriction Sites: Sgfl-MluI



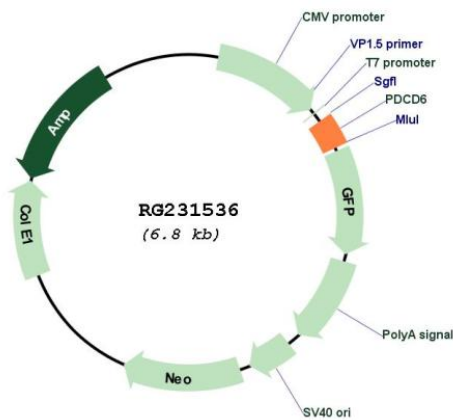
[View online »](#)

Cloning Scheme:

Cloning sites used for ORF Shuttling:



Plasmid Map:



ACCN: NM_001267559

ORF Size: 207 bp

OTI Disclaimer:	The molecular sequence of this clone aligns with the gene accession number as a point of reference only. However, individual transcript sequences of the same gene can differ through naturally occurring variations (e.g. polymorphisms), each with its own valid existence. This clone is substantially in agreement with the reference, but a complete review of all prevailing variants is recommended prior to use. More info
OTI Annotation:	This clone was engineered to express the complete ORF with an expression tag. Expression varies depending on the nature of the gene.
Components:	The ORF clone is ion-exchange column purified and shipped in a 2D barcoded Matrix tube containing 10ug of transfection-ready, dried plasmid DNA (reconstitute with 100 ul of water).
Reconstitution Method:	<ol style="list-style-type: none">1. Centrifuge at 5,000xg for 5min.2. Carefully open the tube and add 100ul of sterile water to dissolve the DNA.3. Close the tube and incubate for 10 minutes at room temperature.4. Briefly vortex the tube and then do a quick spin (less than 5000xg) to concentrate the liquid at the bottom.5. Store the suspended plasmid at -20°C. The DNA is stable for at least one year from date of shipping when stored at -20°C.
RefSeq:	NM_001267559.2
RefSeq Size:	882 bp
RefSeq ORF:	210 bp
Locus ID:	10016
UniProt ID:	O75340
Cytogenetics:	5p15.33
Protein Families:	Druggable Genome
Gene Summary:	This gene encodes a calcium-binding protein belonging to the penta-EF-hand protein family. Calcium binding is important for homodimerization and for conformational changes required for binding to other protein partners. This gene product participates in T cell receptor-, Fas-, and glucocorticoid-induced programmed cell death. In mice deficient for this gene product, however, apoptosis was not blocked suggesting this gene product is functionally redundant. Alternatively spliced transcript variants encoding multiple isoforms have been observed for this gene, and a pseudogene of this gene is also located on the short arm of chromosome 5. [provided by RefSeq, May 2012]