

Product datasheet for **RG231533**

GNGT2 (NM_001198755) Human Tagged ORF Clone

Product data:

Product Type: Expression Plasmids
Product Name: GNGT2 (NM_001198755) Human Tagged ORF Clone
Tag: TurboGFP
Symbol: GNGT2
Synonyms: G-GAMMA-8; G-GAMMA-C; GNG9; GNGT8
Mammalian Cell Selection: Neomycin
Vector: pCMV6-AC-GFP (PS100010)
E. coli Selection: Ampicillin (100 ug/mL)
ORF Nucleotide Sequence: >RG231533 representing NM_001198755
Red=Cloning site **Blue**=ORF **Green**=Tags(s)

TTTTGTAATACGACTCACTATAGGGCGGCCGGAATTCGTCGACTGGATCCGGTACCGAGGAGATCTGCC
GCC**CGATCGCC**

**ATGGCCAGGATCTCAGCGAGAAGGACCTGTTGAAGATGGAGGTGGAGCAGCTGAAGAAAGAAGTGAAAA
ACACAAGAATTCGATTCCAAAGCGGGAAAGGAAATCAAGGAGTACGTGGAGGCCCAAGCAGGAAACGA
TCCTTTTCTCAAAGGCATCCCTGAGGACAAGAATCCCTTCAAGGAGAAAGGTGGCTGTCTGATAAGC**

ACGCGTACGCGGCCGCTCGAG - GFP Tag - GTTTAA

Protein Sequence: >RG231533 representing NM_001198755
Red=Cloning site **Green**=Tags(s)

MAQDLSEKDLLKMEVEQLKKEVKNTRIPISKAGKEIKEYVEAQAGNDPFLKGIPEDKNPFKEKGGCLIS

TRTRPLE - GFP Tag - V

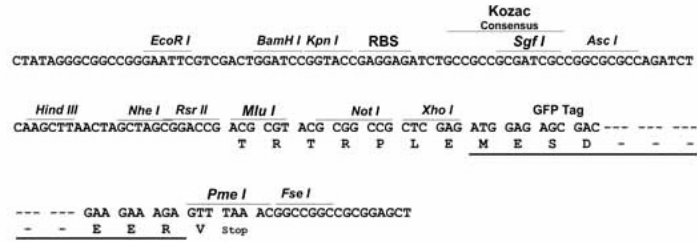
Restriction Sites: Sgfl-Mlul



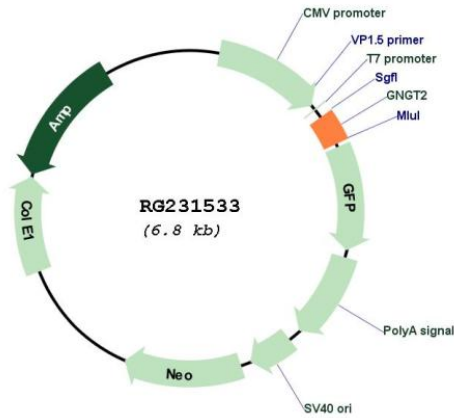
[View online »](#)

Cloning Scheme:

Cloning sites used for ORF Shutting:



Plasmid Map:



ACCN: NM_001198755

ORF Size: 207 bp

OTI Disclaimer:	The molecular sequence of this clone aligns with the gene accession number as a point of reference only. However, individual transcript sequences of the same gene can differ through naturally occurring variations (e.g. polymorphisms), each with its own valid existence. This clone is substantially in agreement with the reference, but a complete review of all prevailing variants is recommended prior to use. More info
OTI Annotation:	This clone was engineered to express the complete ORF with an expression tag. Expression varies depending on the nature of the gene.
Components:	The ORF clone is ion-exchange column purified and shipped in a 2D barcoded Matrix tube containing 10ug of transfection-ready, dried plasmid DNA (reconstitute with 100 ul of water).
Reconstitution Method:	<ol style="list-style-type: none">1. Centrifuge at 5,000xg for 5min.2. Carefully open the tube and add 100ul of sterile water to dissolve the DNA.3. Close the tube and incubate for 10 minutes at room temperature.4. Briefly vortex the tube and then do a quick spin (less than 5000xg) to concentrate the liquid at the bottom.5. Store the suspended plasmid at -20°C. The DNA is stable for at least one year from date of shipping when stored at -20°C.
RefSeq:	NM_001198755.1 , NP_001185684.1
RefSeq Size:	1040 bp
RefSeq ORF:	210 bp
Locus ID:	2793
UniProt ID:	O14610
Cytogenetics:	17q21.32
Protein Families:	Druggable Genome
Protein Pathways:	Chemokine signaling pathway
Gene Summary:	Phototransduction in rod and cone photoreceptors is regulated by groups of signaling proteins. The encoded protein is thought to play a crucial role in cone phototransduction. It belongs to the G protein gamma family and localized specifically in cones. Several transcript variants encoding the same protein have been found for this gene. [provided by RefSeq, Nov 2010]