

Product datasheet for **RG231530**

GNG10 (NM_001198664) Human Tagged ORF Clone

Product data:

Product Type: Expression Plasmids
Product Name: GNG10 (NM_001198664) Human Tagged ORF Clone
Tag: TurboGFP
Symbol: GNG10
Mammalian Cell Selection: Neomycin
Vector: pCMV6-AC-GFP (PS100010)
E. coli Selection: Ampicillin (100 ug/mL)
ORF Nucleotide Sequence: >RG231530 representing NM_001198664
 Red=Cloning site Blue=ORF Green=Tags(s)

TTTTGTAATACGACTCACTATAGGGCGGCCGGAATTCGTCGACTGGATCCGGTACCGAGGAGATCTGCC
 GCC**CGATCGCC**

ATGTCCTCCGGGGCTAGCGCGAGCGCCCTGCAGCGCTTGGTAGAGCAGCTCAAGTTGGAGGCTGGCGTGG
 AGAGGATCAAGGTCTCTCAGGCAGCTGCAGAGCTTCAACAGTACTGTATGCAGAAATGCCTGCAAGGATGC
 CCTGCTGGTGGGTGTTCCAGCTGGAAGTAACCCCTTCCGGGAGCCTAGATCCTGTGCTTTACTC

ACGCGTACGCGGCCGCTCGAG - GFP Tag - GTTTAA

Protein Sequence: >RG231530 representing NM_001198664
 Red=Cloning site Green=Tags(s)

MSSGASASALQRLVEQLKLEAGVERIKVSQAAAELOQYCMQNACKDALLVGVPAAGSNPFREPRSCALL

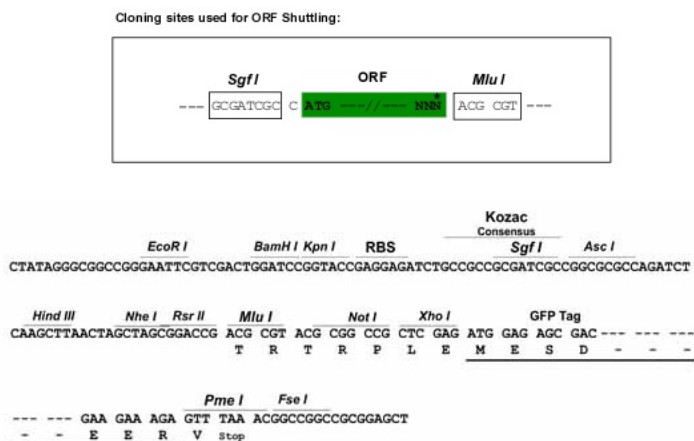
TRTRPLE - GFP Tag - V

Restriction Sites: Sgfl-MluI

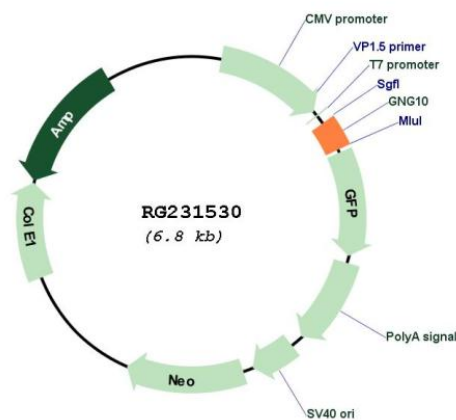


[View online »](#)

Cloning Scheme:



Plasmid Map:



ACCN: NM_001198664

ORF Size: 204 bp

OTI Disclaimer:	The molecular sequence of this clone aligns with the gene accession number as a point of reference only. However, individual transcript sequences of the same gene can differ through naturally occurring variations (e.g. polymorphisms), each with its own valid existence. This clone is substantially in agreement with the reference, but a complete review of all prevailing variants is recommended prior to use. More info
OTI Annotation:	This clone was engineered to express the complete ORF with an expression tag. Expression varies depending on the nature of the gene.
Components:	The ORF clone is ion-exchange column purified and shipped in a 2D barcoded Matrix tube containing 10ug of transfection-ready, dried plasmid DNA (reconstitute with 100 ul of water).
Reconstitution Method:	<ol style="list-style-type: none">1. Centrifuge at 5,000xg for 5min.2. Carefully open the tube and add 100ul of sterile water to dissolve the DNA.3. Close the tube and incubate for 10 minutes at room temperature.4. Briefly vortex the tube and then do a quick spin (less than 5000xg) to concentrate the liquid at the bottom.5. Store the suspended plasmid at -20°C. The DNA is stable for at least one year from date of shipping when stored at -20°C.
RefSeq:	NM_001198664.2
RefSeq Size:	1266 bp
RefSeq ORF:	207 bp
Locus ID:	2790
UniProt ID:	P50151
Cytogenetics:	9q31.3
Protein Families:	Druggable Genome
Protein Pathways:	Chemokine signaling pathway
Gene Summary:	Guanine nucleotide-binding proteins (G proteins) are involved as a modulator or transducer in various transmembrane signaling systems. The beta and gamma chains are required for the GTPase activity, for replacement of GDP by GTP, and for G protein-effector interaction. Interacts with beta-1 and beta-2, but not with beta-3.[UniProtKB/Swiss-Prot Function]