

Product datasheet for **RG231506**

TMEM127 (NM_001193304) Human Tagged ORF Clone

Product data:

Product Type: Expression Plasmids
Product Name: TMEM127 (NM_001193304) Human Tagged ORF Clone
Tag: TurboGFP
Symbol: TMEM127
Mammalian Cell Selection: Neomycin
Vector: pCMV6-AC-GFP (PS100010)
E. coli Selection: Ampicillin (100 ug/mL)
ORF Nucleotide Sequence: >RG231506 representing NM_001193304
Red=Cloning site Blue=ORF Green=Tags(s)

TTTTGTAATACGACTCACTATAGGGCGGCCGGGAATTCGTCGACTGGATCCGGTACCGAGGAGATCTGCC
GCCCGATCGCC

ATGTACGCCCCGGAGGCGCAGGGCTGCCGGCGGGCGCCGGCGGAGGAGCCCGGGAGGCAGCGCTCTGC
 CCAAGCAGCCGGAGCGTAGCCTGGCCTCGGCCCTGCCTGGCGCCCTGTCTATCACGGCGCTGTGCACTGC
 CCTCGCCGAGCCCGCCTGGTTGCACATCCACGGAGGCACCTGTTTCGCGCCAGGAGCTGGGGGTCTCCGAC
 GTGTTGGGCTATGTGCACCCGGACCTGCTGAAAGATTTCTGCATGAATCCCCAGACAGTGTCTCCTGCG
 GGTGCATCGCCGCTTCTGTTTCTGGGCATCCTGTGTAGTCTCTCCGCTTTCCTTCTGGATGCTTTTGG
 GCCGAAGCATCCTGCTCTGAAGATCACTCGTCGCTATGCCTTCGCCCATATCCTAACGGTTCTGCAGTGT
 GCCACCGTCATTGGCTTTTCTTATTGGGCTTCTGAACTCATCTTGGCCCAGCAGCAGCAGCATAAGAAGT
 ACCATGGATCCCAGGTCTATGTCACCTTCGCCGTTAGCTTCTACCTGGTGGCAGGAGCTGGTGGAGCCTC
 AATCCTGGCCACGGCAGCCAACCTCCTGCGCCACTACCCACAGAGGAAGAGGAGCAGGCCTGGAGCTG
 CTCTCAGAGATGGAAGAGAACGAGCCCTACCCGGCGGAATATGAGGTCATCAACCAGTTCAGCCACCCC
 CTGCTTACACACC

ACGCGTACGCGGCCGCTCGAG - GFP Tag - GTTTAA

Protein Sequence: >RG231506 representing NM_001193304
Red=Cloning site Green=Tags(s)

MYAPGGAGLPGRRRRSPGGSALPKQPERSLASALPGALSITALCTALAEPAWLHIHGGTCSRQELGVSD
 VLGYPVDPDLLKDFCMNPQTVLLLRVIAAFCLGILCSLSAFLLDVFGPKHPALKITRRYAFHILTVLQC
 ATVIGFSYWASELILAQQQHKKYHGSQYVTFVAVSFYLVAGAGGASILATAANLLRHYPTEEEEALEL
 LSEMEENEPYPAEYEVINQFQPPPAYTP

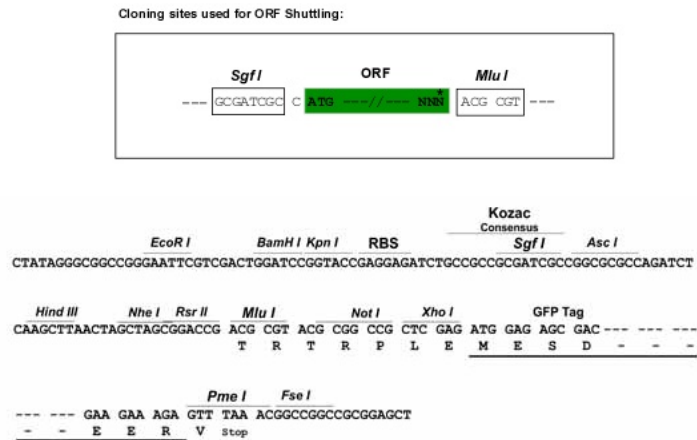
TRTRPLE - GFP Tag - V



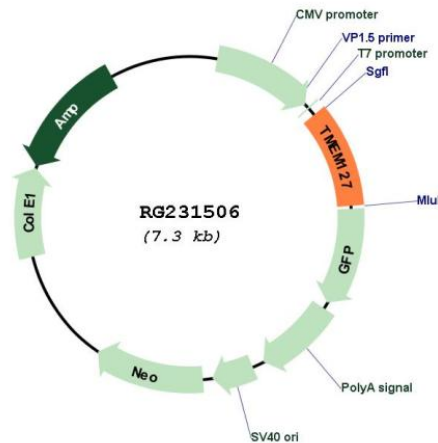
[View online »](#)

Restriction Sites: SgfI-MluI

Cloning Scheme:



Plasmid Map:



ACCN: NM_001193304

ORF Size: 714 bp

OTI Disclaimer: The molecular sequence of this clone aligns with the gene accession number as a point of reference only. However, individual transcript sequences of the same gene can differ through naturally occurring variations (e.g. polymorphisms), each with its own valid existence. This clone is substantially in agreement with the reference, but a complete review of all prevailing variants is recommended prior to use. [More info](#)

OTI Annotation: This clone was engineered to express the complete ORF with an expression tag. Expression varies depending on the nature of the gene.

Components:	The ORF clone is ion-exchange column purified and shipped in a 2D barcoded Matrix tube containing 10ug of transfection-ready, dried plasmid DNA (reconstitute with 100 ul of water).
Reconstitution Method:	<ol style="list-style-type: none">1. Centrifuge at 5,000xg for 5min.2. Carefully open the tube and add 100ul of sterile water to dissolve the DNA.3. Close the tube and incubate for 10 minutes at room temperature.4. Briefly vortex the tube and then do a quick spin (less than 5000xg) to concentrate the liquid at the bottom.5. Store the suspended plasmid at -20°C. The DNA is stable for at least one year from date of shipping when stored at -20°C.
RefSeq:	<u>NM_001193304.3</u>
RefSeq Size:	4570 bp
RefSeq ORF:	717 bp
Locus ID:	55654
UniProt ID:	<u>O75204</u>
Cytogenetics:	2q11.2
Protein Families:	Transmembrane
Gene Summary:	This gene encodes a transmembrane protein with 3 predicted transmembrane domains. The protein is associated with a subpopulation of vesicular organelles corresponding to early endosomal structures, with the Golgi, and with lysosomes, and may participate in protein trafficking between these structures. Mutations in this gene and several other genes cause pheochromocytomas. Alternatively spliced transcript variants encoding the same protein have been identified. [provided by RefSeq, Aug 2010]