

Product datasheet for **RG231490**

COL11A1 (NM_001190709) Human Tagged ORF Clone

Product data:

Product Type:	Expression Plasmids
Product Name:	COL11A1 (NM_001190709) Human Tagged ORF Clone
Tag:	TurboGFP
Symbol:	COL11A1
Synonyms:	CO11A1; COLL6; DFNA37; STL2
Mammalian Cell Selection:	Neomycin
Vector:	pCMV6-AC-GFP (PS100010)
E. coli Selection:	Ampicillin (100 ug/mL)
ORF Nucleotide Sequence:	>RG231490 representing NM_001190709 Red=Cloning site Blue=ORF Green=Tags(s)

TTTTGTAATACGACTCACTATAGGGCGGCCGGAATTCGTCGACTGGATCCGGTACCGAGGAGATCTGCC
GCC**CGATCGCC**

ATGGAGCCGTGGTCTCTAGGTGGAAAACGAAACGGTGGCTCTGGGATTCACCGTAACAACCTCGCAT
TGACCTTCTCTCCAAGCTAGAGAGGTGAGAGGAGCTGCTCCAGTTGATGTACTAAAAGCACTAGATTT
TCACAATTCTCCAGAGGGAATATCAAAAACAACGGGATTTGCACAAACAGAAAGATTCTAAAGGCTCA
GATACTGCTTACAGAGTTTCAAAGCAAGCACAACCTCAGTGCCCAACAAAACAGTTATTTCCAGGTGGAA
CTTTCCAGAAGACTTTTCAATACTATTTACAGTAAAACCAAAAAAGGAATTCAGTCTTCTCTTTTATC
TATATATAATGAGCATGGTATTACAGCAAATGGTGTGAGGTTGGGAGATCACCTGTTTTCTGTTTGAA
GACCACACTGGAAAACCTGCCCAAGAACTATCCCCTCTTCAGAACTGTTAACATCGCTGACGGGAAGT
GGCATCGGGTAGCAATCAGCGTGGAGAAGAAAACCTGTGACAATGATTGTTGATTGTAAGAAGAAAACCA
GAAACCACTTGATAGAAGTGAGAGAGCAATTGTTGATACCAATGGAATCACGGTTTTTGGAAACAGGATT
TTGGATGAAGAAGTTTTTGGGGGACATTCAGCAGTTTTTGTACACAGGTGATCCCAAGGCAGCATATG
ACTACTGTGAGCATTATAGTCCAGACTGTGACTCTTCAGCACCAAGGCTGCTCAAGCTCAGGAACCTCA
GATAGATGAGGCAACATCGTTGATGATTTTCAAGAATACTATGGAACAATGGAAAGTTACCAGACA
GAAGCTCCTAGGCATGTTTCTGGGACAAATGAGCCAAATCCAGTTGAAGAATATTTACTGAAGAATATC
TAACGGGAGAGGATTATGATCCAGAGGAAAAATTCTGAGGATACACTATATGAAAACAAGAAATAGA
CGGCAGGGATTCTGATCTTCTGGTAGATGGAGATTTAGGCGAATATGATTTTTATGAATATAAAGAATAT
GAAGATAAACCAACAAGCCCCCTAATGAAGAATTTGGTCCAGGTGTACCAGCAGAACTGATATTACAG
AAACAAGCATAAATGGCCATGGTGCATATGGAGAGAAAGGACAGAAAGGAGAACCAGCAGTGGTTGAGCC
TGGTATGCTTGTGCAAGGACCACCAGGACCAGCAGGACCTGCAGGTATTATGGTCTCCAGGTCTACAA
GGCCCCACTGGACCCCTGGTGACCCTGGCGATAGGGGCCCCCAAGGACGTCCTGGCTTACCAGGGGCTG
ATGGTCTACCTGGTCTCTGGTACTATGTTGATGTTACCGTTCGGTTATGGTGGTATGGTTCCAAAGG
ACCAACCATCTCTGCTCAGGAAGCTCAGGCTCAAGCTATCTTCAGCAGGCTCGGATTGCTCTGAGAGGC



[View online »](#)

CCACCTGGCCCAATGGGTCTAACTGGAAGACCAGGTCCTGTGGGGGGCCTGGTTCATCTGGGGCCAAAG
GTGAGAGTGGTATCCAGGTCCTCAGGGCCCTCGAGGCGTCCAGGGTCCCCTGGTCCAACGGGAAAACC
TGGAAAAAGGGTTCGTCAGGTGCAGATGGAGGAAGAGGAATGCCAGGAGAACCTGGGGCAAAGGGAGAT
CGAGGGTTTGTAGGACTTCCGGGTCTGCCAGGTGACAAAGGTACAGGGGTGAACGAGGTCTCAAGGTC
CTCCAGGTCCTCCTGGTATGATGGAATGAGGGGAGAAGATGGAGAAATTGGACCAAGAGGTCTCCAGG
TGAAGCTGGCCACGAGGTTTGTGGGTCCAAGGGGAACCTCAGGAGCTCCAGGGCAGCCTGGTATGGCA
GGTGTAGATGGCCCCCAGGACCAAAAGGGAACATGGGTCCCCAAGGGGAGCCTGGGCCTCAGGTCAAC
AAGGGAATCCAGGACCTCAGGGTCTTCTGGTCCACAAGGTCCAATTGGTCTCCTGGTGAAAAAGGACC
ACAAGGAAAACAGGACTTGTGGACTTCTGGTGTGATGGCCCTCCTGGTCATCCTGGGAAAAGAGGC
CAGTCTGGAGAAAAGGGGCTCTGGTCCCCTGGTCCACAAGGTCTATTGGATACCCGGGCCCCCGGG
GAGTAAAGGGAGCAGATGGTGTGAGAGGTCTAAGGGATCTAAAGGTGAAAAGGGTGAAGATGGTTTTCC
AGGATTCAAAGGTGACATGGGTCTAAAAGGTGACAGAGGAGAAGTTGGTCAAATTGGCCCAAGAGGGGAA
GATGGCCCTGAAGGACCCAAAGGTGAGCAGGCCCAACTGGAGACCCAGGTCTTCAAGTCAAGCAGGAG
AAAAGGGAAAACCTGGAGTTCAGGATTACCAGGATATCCAGGAAGACAAGGTCCAAAGGGTTCCACTGG
ATTCCTGGGTTTCCAGGTGCCAATGGAGAGAAAGGTGCACGGGAGTAGCTGGCAAACAGGCCCTCGG
GGTCAGCGTGGTCCAACGGGTCCTCGAGGTTCAAGAGGTGCAAGAGGTCCCACTGGGAAACCTGGGCCAA
AGGGCACTTCAGGTGGCGATGGCCCTCCTGGCCCTCCAGGTGAAAGAGGTCTCAAGGACCTCAGGGTCC
AGTTGGATTCCCTGGACCAAAAGGCCCTCCTGGACCACCTGGGAAGGATGGGCTGCCAGGACACCCTGGG
CAACGTGGGGAGACTGGATTTCAAGGCAAGACCGGCCCTCCTGGGCCAGGGGAGTGGTTGGACCACAGG
GACCAACCGGTGAGACTGGTCCAATAGGGGAACGTGGGCATCCTGGCCCTCCTGGCCCTCCTGGTGAACA
AGGTCTTCTGGTGTGCAGGAAAAGAAGGTGCAAAGGGTATCCAGGTCTCAAGGTATCTCAGGGAAA
GATGGACCAGCAGGATTACGTGGTTTCCAGGGGAAAGAGGTCTTCTGGAGCTCAGGGTGCACCTGGAC
TGAAAGGAGGGGAAGTCCCAGGGCCCAAGGTCCAGTTGGCTCACCAGGAGAACGTTGGTGCAGCAGG
TACAGCTGGCCCAATTGGTTTACCAGGGGCGCCGGGACCTCAGGGTCTCCTGGTGCAGCTGGAGAGAAA
GGTGTCTCCTGGAGAAAAGGTCCCAAGGGCTGCAGGGAGAGATGGAGTTCAAGGTCTGTTGGTCTCC
CAGGGCCAGTGGTCTGCCGGCTCCCCTGGGGAAGACGGAGACAAGGGTGAATTTGGTGAAGCCGGGACA
AAAAGGCAGCAAGGGTGACAAGGGAGAAAATGGCCCTCCCGGTCCCCAGGTCTTCAAGGACCAAGTTGGT
GCCCTGGAAATTGCTGGAGGTGATGGTGAACCAGGTCTAGAGGACAGCAGGGGATGTTTGGGCAAAAAG
GTGATGAGGGTGCAGAGGCTTCCCTGGACCTCCTGGTCCAATAGGTCTTCAAGGTCTGCCAGGCCACC
TGGTGAAAAGGTGAAAATGGGGATGTTGGTCCCATGGGGCCACCTGGTCTCCAGGCCCAAGAGGCCCT
CAAGGTCCAATGGAGCTGATGGACCACAAGGACCCCAAGGTCTGTTGGTTCAAGTGGTGGTGGTGGAG
AAAAGGGTGAACCTGGAGAAGCAGGGAACCCAGGGCCTCCTGGGGAAGCAGGTGTAGGCGGTCCCAAAGG
AGAAAGAGGAGAGAAAAGGGGAAGCTGGTCCACCTGGAGCTGTGGACCTCCAGGTGCCAAGGGGCCACCA
GGTGTGATGGCCCTAAGGGTAACCCGGGTCTGTTGGTTTTCTGGAGATCCTGGTCTCCTGGGGAAC
CTGGCCCTGCAGGTCAAGATGGTGTGGTGGTGAAGGATGGAGATCCTGGTCAACCGGGTCC
TCTGGCCATCTGGTGAAGGCTGGCCACCAGGTCTCCTGGAAAACGAGGTCTCCTGGAGCTGCAGGT
GCAGAGGGAAGACAAGGTGAAAAGGTGCTAAGGGGGAAGCAGGTGCAGAAGGTCTCCTGGAAAACCCG
GCCAGTCGGTCTCAGGACCTGCAGGAAAGCCTGGTCCAGAAGGTCTTCGGGGCATCCCTGGTCTGT
GGGAGAACAAAGGTCTCCTGGAGCTGCAGGCCAAGATGGACCACCTGGTCTATGGGACCTCCTGGCTTA
CCTGGTCTCAAAGGTGACCCTGGTCCAAGGGTGAAGGGGACATCCTGGTTAATTGGCCTGATTGGTCT
CTCCAGGAGAACAAGGGGAAAAGGTGACCGAGGGCTCCCTGGAACCTCAAGGATCTCCAGGAGCAAAAGG
GGATGGGGGAATTCTGGTCTGCTGGTCCCTTAGGTCCACCTGGTCTCCAGGTTTACCAGGTCTCAA
GGCCCAAGGGTAACAAAGGCTCTACTGGACCCGCTGGCCAGAAAGGTGACAGTGGTCTTCCAGGGCCTC
CTGGGTCTCCAGGTCCACCTGGTGAAGTCACTCAGCCTTACCAATCTTGTCTCCAAAAAACGAGAAG
ACATACTGAAGGCATGCAAGCAGATGCAGATGATAATTTCTTGATTACTCGGATGGAATGGAAGAAATA
TTTGGTCCCTCAATCCCTGAAACAAGACATTGAGCATATGAAATTTCCAATGGTACTCAGACCAATC
CAGCCCGAACTTGTAAAGACCTGCAACTCAGCCATCCTGACTCCAGATGGTGAATATTGGATTGATCC
TAACCAAGGTTGCTCAGGAGATTCTTCAAAGTTTACTGTAATTTACATCTGGTGGTGAAGTTCGATT
TATCCAGACAAAAATCTGAGGGAGTAAGAATTTATCATATGGCCAAAGGAGAAAACAGGAAGTTGGTTTA
GTGAATTTAAGAGGGGAAAACCTGCTTCACTTAGATGTTGAAGGAAATTCATCAATATGGTGAACAT
GACATTCCTGAAACTTCTGACTGCCTCTGCTCGGCAAAATTTACCTACCACTGTATCAGTCAGCAGCC
TGGTATGATGTGCATCAGGAAGTTATGACAAAGCACTTCGTTCTGGGATCAATGATGAGGAGATGT

CCTATGACAATAATCCTTTTATCAAAACACTGTATGATGGTTGTGCGTCCAGAAAAGGCTATGAAAAGAC
 TGTCAATTGAAATCAATACACCAAAAATTGATCAAGTACCTATTGTTGATGTCATGATCAATGACTTTGGT
 GATCAGAATCAGAAGTTCGGATTGAAGTTGGTCTGTTTCTTGGC

ACGCGTACGCGGCCGCTCGAG - GFP Tag - GTTTAA

Protein Sequence:

>RG231490 representing NM_001190709
 Red=Cloning site Green=Tags(s)

MEPWSSRWKTRWLWDFVTTLALTFQAREVGAAPVDVLKALDFHNSPEGISKTTGFCTNRKNSKGS
 DTAYRVSKQAQLSAPTKQLFPGGTFPEDFSILFTVKPKKGIQSFLLSIYNEHGIQQIGVEVGRSPVLF
 DHTGKPAPEYPLFRTVNIADGKWHRVAISVEKKTVTMIVDCKKTKPLDRSERAIVDNITVFGTRI
 LDEEVFEGDIQQFLITGDPKAAAYDYCEHYSPTDCSSAPKAAQAQEPQIDEANIVDDFQEYNYGTMESYQT
 EAPRHVSGTNEPNPVEEIFTEEYLTGEDYDSQRKNSEDTLYENKEIDGRSDLLVDGDLGEYDFYKEY
 EDKPTSPNEEFPGVPAETDITETISINGHAYGEKQKGEPAVVEPGMLVEGPPGAPAGIMGPPGLQ
 GPTGPPGDPDRGPPGRPLPGADGLPGPPGTMMLPFRYGGDGSKGPTISAQEAQAQAILQQARIALRG
 PPGPMLTGRPGPVGGPSSGAKGESGDPGQPRGVQPPGPTGKPGKRGRPGADGGRGMPGEPGAKGD
 RGFDFGLPGLPGDKGHRGERGPPGPPGDDGMRGEDGEGIPRGLPGEAGPRGLLGRPGTPGAPGQPM
 GVDGPPGPKGNMGPPGEPGPPGQGNPGPQGLPGPQGPVGGPGEKGPQKPLAGLPGADGPPGHPGKEG
 QSGEKALGPPGPPGPIGYPGRGVKADGVRGLKSKGKEDGDFPFKGMGLKDRGEVQIGPRGE
 DGPEGPKGRAGPTGDPGSSGQAGEKGLGVPGLPGYPGRQPKGSTGFPFPGANGEKARGVAGKPGPR
 GQRGPTGPRSRGARGPTGKPGPKGTSGGDGPPGPPGERGPPGPPGPPGPPGPPGPPGPPGPPGPPG
 QRGETGFQKGTGPPGPGVVPQPTGETGPIGERGHPGPPGPPGPPGPPGPPGPPGPPGPPGPPGPPG
 DGPAGLRGFPGERGLPGAQAGPLKGGEGPQPPGPPVGSPPGERGSAGTAGPIGLPGRPGPQPPGAGEK
 GAPGEKGPQGPAGRDGVQGPVGLPGPAGPAGSPGEDGDKGEIGEPGQKSGDKGENGPPGPPGLQGPV
 APGIAGGDGEPGRGQGMFGQKDEGARGFPGPPGPIGLQGLPGPPGKGENGDVGMGPPGPPGPRGP
 QGPNAGDGPQPPGVSVGGVGEKGEPEAGNPPGPEAGVGGPKGERGEKGEAGPPGAAGPPGAKGPP
 GDDGPKGNPVPVFPDPGPPGEPGAGQDVGVDKGEDGDPGPPGPPGPPGPPGPPGPPGPPGPPGPPG
 AEGRQGEKGAKEAGAEGPPGKTGPVGPQGPAGKPGPEGLRGIPVVEQGLPGAAGQDPPGPPGPPGL
 PGLKGDPSKGEKHPGLIGLIGPPGEQGEKDRGLPGTQGSPPGAKGDDGIPGPAGPLGPPGPPGLPGPQ
 GPKGNKSTGPAGQKGSGLPGPPGSPGPPGEVIQPLPILSSKTRRHTEGMQADADDNILDYSDGMEEI
 FGSLNSLKQDIEHMKFPMGTQTNPARTCKDLQLSHPDFPDGEYWIWIDPNQGCSDSFKVYCNFTSGGETCI
 YPDKKSEGVRISSWPKEKPGSWFSEFKRGKLLSYLDVEGNSINMVQMTFLKLLTASARQNFYHCHQSAA
 WYDVSSGSYDKALRFLGSNDEEMSYDNNPFIKTLYDGCASRKGYEKTVIEINTPKIDQVPIVDVMINDFG
 DQNQKFGFEVGPVCFGLG

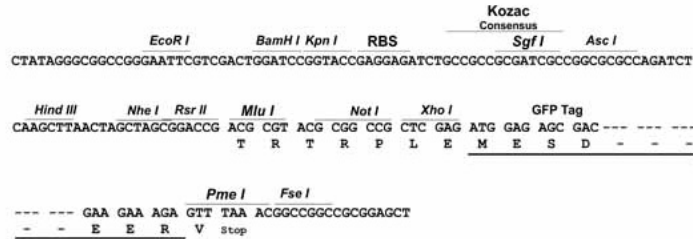
TRTRPLE - GFP Tag - V

Restriction Sites:

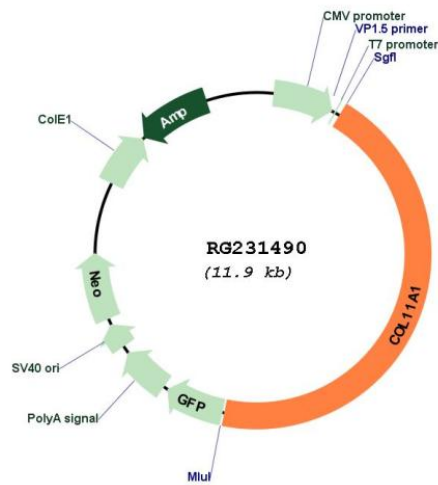
Sgfl-MluI

Cloning Scheme:

Cloning sites used for ORF Shutting:



Plasmid Map:



ACCN:	NM_001190709
ORF Size:	5301 bp
OTI Disclaimer:	The molecular sequence of this clone aligns with the gene accession number as a point of reference only. However, individual transcript sequences of the same gene can differ through naturally occurring variations (e.g. polymorphisms), each with its own valid existence. This clone is substantially in agreement with the reference, but a complete review of all prevailing variants is recommended prior to use. More info
OTI Annotation:	This clone was engineered to express the complete ORF with an expression tag. Expression varies depending on the nature of the gene.
Components:	The ORF clone is ion-exchange column purified and shipped in a 2D barcoded Matrix tube containing 10ug of transfection-ready, dried plasmid DNA (reconstitute with 100 ul of water).
Reconstitution Method:	<ol style="list-style-type: none">1. Centrifuge at 5,000xg for 5min.2. Carefully open the tube and add 100ul of sterile water to dissolve the DNA.3. Close the tube and incubate for 10 minutes at room temperature.4. Briefly vortex the tube and then do a quick spin (less than 5000xg) to concentrate the liquid at the bottom.5. Store the suspended plasmid at -20°C. The DNA is stable for at least one year from date of shipping when stored at -20°C.
RefSeq:	NM_001190709.1 , NP_001177638.1
RefSeq Size:	7191 bp
RefSeq ORF:	5304 bp
Locus ID:	1301
UniProt ID:	P12107
Cytogenetics:	1p21.1
Protein Pathways:	ECM-receptor interaction, Focal adhesion
Gene Summary:	This gene encodes one of the two alpha chains of type XI collagen, a minor fibrillar collagen. Type XI collagen is a heterotrimer but the third alpha chain is a post-translationally modified alpha 1 type II chain. Mutations in this gene are associated with type II Stickler syndrome and with Marshall syndrome. A single-nucleotide polymorphism in this gene is also associated with susceptibility to lumbar disc herniation. Multiple transcript variants have been identified for this gene. [provided by RefSeq, Nov 2009]