

Product datasheet for **RG231487**

LARG (ARHGEF12) (NM_001198665) Human Tagged ORF Clone

Product data:

Product Type:	Expression Plasmids
Product Name:	LARG (ARHGEF12) (NM_001198665) Human Tagged ORF Clone
Tag:	TurboGFP
Symbol:	ARHGEF12
Synonyms:	LARG; PRO2792
Mammalian Cell Selection:	Neomycin
Vector:	pCMV6-AC-GFP (PS100010)
E. coli Selection:	Ampicillin (100 ug/mL)
ORF Nucleotide Sequence:	>RG231487 representing NM_001198665 Red=Cloning site Blue=ORF Green=Tags(s)

TTTTGTAATACGACTCACTATAGGGCGGCCGGAATTCGTCGACTGGATCCGGTACCGAGGAGATCTGCC
GCC**CGATCGCC**

ATGAGTGGCACACAGTCTACTATCACCGACAGGTTCCCTCAAAAACCTATAAGGCATGGAAGTATTT
TGAACCGAGAGTCACCAACAGATAAGAAGCAGAAAGTTGAGCGCATTGCATCACATGATTTTGACCCAC
AGGTCTTGTTGAGCGTTGCGTAATCATCCAGAAAGATGACAATGGATTTGGGCTGACGGTCAGTGGAGAC
AATCCAGTCTTCGTACAGTCTGTCAAAGAAGATGGAGCAGCCATCGGGCTGGAGTACAGACAGGTGATC
GAATCATCAAGGTGAATGGAACCTGGTGACTCATTCAAATCATCTGGAGGTGGTGAAGCTAATCAAATC
TGGTTCCTATGTAGCTCTCACTGTTGAGGACGCCACCTGGGTGCGCCAGATTCCAATTGCCGACTCT
GAAGTAGAGCCGTCAGTCATTGGACATATGTCTCCCATCATGACATCTCCTCATTACCTGGAGCATCTG
GGAATATGGAGAGAATCACTAGTCTGTGCTCATGGGGGAGGAAAACAATGTGGTTCATAACCAGAAAGT
AGAAATTTCTGAGAAAAATGTTACAGAAAGAACAGGAACGGCTACAGTTATTGCAGGAAGATTACAACCGA
ACACCTGCCCAAAGATTGCTAAAAGAGATCCAAGAGGCCAAGAAACACATTCTCAGTGAAGAGCAGT
TATCCAAAGCCACAGGCTCTGCTCAGGATGGAGCTGTAGTTACACCCTCCAGACCTTTAGGGGACACCCT
AACAGTCACTGAGGCAGAAACAGATCCTGGAGATGTACTGGGCAGGACTGACTGTAGCAGTGGAGATGCT
TCTCGGCCAGTAGTGACAATGCAGATAGTCCCAAGAGTGGCCAAAAGAGAGAATTTATCTAGAGGAAA
ACCCAGAGAAAAGTGAAACAATTCAGGACTGCACTCAATCACTTGTGCGAAGTCCCTCAACCCGTAT
AGCACCTCATATTATTGGAGCAGAAGATGATGATTTTGGTACTGAACATGAACAGATCAATGGACAGTGC
AGCTGTTTCCAGAGCATTGAATTAATAAACTCTGCCCCGCTCATTTGGCTGTTTTCTTACACCATGTAG
TTTCAAAATTTGACCCTGCGACTTTGCTCTGTTATCTCTATTGAGACCTGTATAAACATAACCAATCCAA
AGAAACTCGTGCATCTTCTTGAGTTTCATCAGTTCTTTCTAGATCGATCAGCACACCTGAAAGTTTCT
GTTCTGTGAAATGTCTGCAGATCTAGAAAAGAGAAGACCTGAGCTCATTCTGAGGATCTGCATCGCC
ACTATATCCAAACTATGCAAGAAAGAGTCCATCCAGAAGTTCAAAGGCACCTAGAAGATTTTCGGCAGAA
ACGTAGTATGGGACTGACCTTGCTGAAAGCGAGCTGACTAAACTTGATGCAGAGCGAGACAAGGACCGA



[View online »](#)

TTGACTTTGGAGAAGGAGCGGACATGTGCAGAACAGATTGTTGCCAAAATTGAAGAAGTATTGATGACTG
CTCAGGCTGTAGAGGAAGATAAGAGCTCCACCATGCAGTATGTTATTCTCATGTATATGAAGCATTGGG
AGTAAAAGTGAAGAGCCTCGAAATTTGGAGCACAACCGGGTCGGATTGGATTTCTCCAAAATCAAG
CAAAGTATGAAGAAAGATAAAGAAGGGGAAAGAAAGGGAAGCGAAGAGGATTCCCAGCATCTGGGAC
CCCCACGGAGACCAAGCCGTCATGACAACAGTGAATTTGGCAGAGCCATGGAACACAGAAGGCGGCCA
CCCTAAGCACTTATCCACACCCTCATCTGTGAGTCCTGAACCTCAGGACTCTGCCAAGTTGCGCCAGAGT
GGGTTAGCAAATGAAGGAACAGACGCTGGATACCTGCCAATTCATGTCTTCTGTAGCTTCAGGGG
CCTCTTTTTCCAGGAAGGAGGAAAGAGAATGATACAGGATCAAAGCAAGTTGGAGAAACATCAGCACC
TGGAGACACCTTAGATGGCACACCTCGTACTCTCAATACTGTCTTTGATTTCCACCACCTCCATTAGAC
CAAGTGCAGGAGGAGGAATGTGAAGTAGAAAGGTGACTGAACATGGGACACCAAAGCCCTTTGAAAGT
TTGACAGTGTAGCTTTTGGAGAAAGTCAAAGTGAAGGATGAACAATTTGAAAATGACTTAGAGACAGATCC
ACCCAACCTGGCAGCAGCTTGTAGTCGAGAAGTGTACTGGGACTAAAACCTTGTGAAATCAAAGACAG
GAAGTGATTAATGAATTGTTCTACTGAAAGAGCTCATGTTGGAACACTGAAGTTCTTGATCAAGTGT
TCTATCAGCGAGTATCCAGAGAAGGAATCTGTACCCTCAGAGCTACGGAAAATTTTTCAAACCTTGA
AGATATTTCTCAACTTCATATTGGATTGAATGAACAAATGAAGGCTGTTGAAAGAGAAAATGAGACCTCT
GTTATCGATCAGATTGGGGAAGATTTGCTGACATGGTTACAGCGACCAGGAGAGGAGAAAATTTGAAACATG
CTGCTGCTACCTTTTGCAGTAACCAACCTTTCCGCTGGAATGATCAAATCTCGTCAGAAAAAGGATTC
TCGATTTCCAGACTTTTGTGCAAGATGCTGAAAGTAAATCCACTGTGTGTCGTCTTCAACTGAAGGATATT
ATTTCCACTCAAATGCAAAGGCTTACTAAGTACCCTTCTGTTGGATAATTTGCCAAATACACAGAAT
GGCCAACAGAAAGGGAGAAGGTGAAGAAAGCTGCAGATCACTGTGTCGTCAGATCTTAAATTTGTAATCA
GGCTGTCAAGGAGGCAGAAAACAAGCAGCGCCTAGAAGATTATCAGCGTCGCCTTGATACCTCCAGCCTG
AAGTTGTCAGAGTACCCAAATGTTGAAGAGCTCAGGAATTTGGATTTAACAAAAGGAAGATGATTCATG
AAGGGCCATTGGTTTGAAGGTGAATAGAGATAAAACTATTGATTTATACACGTTGCTGGAAGCATG
TCTTGATTGTTACAAAAGCAGGATGATAGACTGGTTTTAAGGTGTCATAGTAAGATTCTGGCATCTACA
GCTGATAGCAAACACACGTTTTAGCCCTGTCATTAAAGTTGAGTACAGTGTGGTTCGACAAGTGGCAACAG
ATAACAAAGCTTTATTCGTCATTTCCATGTGACACAATGGCGCTCAGATTTATGAACTGGTGGCACAGAC
AGTTTTCTGAAAAGACTGTCTGGCAGGACCTAATCTGTCGGATGGCTGCATCAGTGAAGGAGCAATCCACA
AAGCCAATTCCATTACCACAGTCAACACCTGGCGAAGGAGATAATGATGAAGAAGATCCTTCAAATTA
AAGAGGAGCAGCATGGCATTTCAGTCACTGGTTTGCAGAGTCCAGACAGAGATTTGGGATTAGAATCTAC
CTTAATATCGTCAAACCTCAGTCTCATTCACTGAGTACCTCTGGGAAATCAGAGGTACGTGATCTGTTT
GTGGCTGAGAGACAGTTTCAAAGGAACAACATACAGATGGGACACTAAAGGAAGTTGGAGAAGATTATC
AAATCGCAATCCCAGATTCACACCTGCCTGTCTCAGAAGAACGGTGGGCATTGGATGCACTAAGAAATTT
GGGTTTGTGAAGCAGTTGCTGGTGAACAGCTAGGTTTACTGAGAAGAGCGTTAGGAAGACTGGCAA
CATTTCCAAAGATACAGAACAGCCTCTCAGGGGCGCAGACAGACAGTGTATCCAGAATCTGAAAATA
TTAAGGCTATCATTCTGGTGAAGGACATATGCCCTTTAGAACTGGAAGTGGTGACATTGCAACTTGTTA
CAGTCCACGGACTTCAACTGAATCTTTTGTCCACGGGATTCACTGGGACTGGCACCCAGGATAGCCAG
GCAAGTAACATTTAGTAATGGACCACATGATTATGACCCAGAGATGCCTACCATGGAGCCAGAAGGGG
GTCTTGATGACAGTGGAGAGCACTTTTTGATGCCCGTGAAGCACATAGTATGAGAATCCATCAGAAGG
TGATGGAGCAGTTAAACAAGGAAGAGAAGGATGTTAATTTACGCATCTCAGGAAACTATTTGATCCTTGAT
GGCTATGACCCAGTGCAGGAGAGTTCCACAGATGAGGAGTTGCTTCTCACTTACCCTGCAGCCCATGA
CAGGCATCCCTGCTGTGGAATCCACCCACAGCAGCAACATTCTCCTCAGAATACTCACTCCGATGGGGC
AATTTACCATTACCCCGAATTTCTGGTCCAGCAGCGCTGGGGAGCTATGGAGTATTCTGTTTTGAG
ATCCAGAGTCCCTCCTTGTGACAGATTCACAGAGCCAGATCATGGAGTACATTCATAAGATAGAGGCTG
ACCTTGAACACTTAAAGAAGGTGGAGGAAAGTTACACCATTCTTTGCCAAAGGCTGGCTGGATCAGCCCT
CACAGACAAGCACTCAGATAAAAGT

ACGCGTACGCGGCCGCTCGAG - GFP Tag - GTTTAA

Protein Sequence: >RG231487 representing NM_001198665
 Red=Cloning site Green=Tags(s)

```

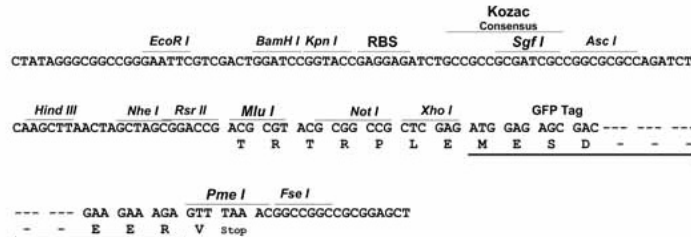
MSGTQSTITDRFPLKKPIRHGSILNRESPTDKKQKVERIASHDFDPTGLVQRCVVIQKDDNGFGLTVSGD
NPVVFVQSVKEDGAAMRAGVQTGDRIKVNGLVTHSNHLEVVKLIKSGSYVALTVQGRPPGSPQIPLADS
EVEPSVIGHMSPIMTSPHSPGASGNMERITSPVLMGEENNVDHNQKVEILRKMLQKEQERLQLLQEDYNR
TPAQRLLKEIQEAKKHIPQLQEQLSKATGSAQDGAVVTPSRPLGDTLTVSEAETDPGDVLRGTRDCSSGDA
SRPSSDNADSPKSGPKERIYLEENPEKSETIQDQDTQSLVGPSPSTRIAPHIIGAEDDDFGTEHEQINGQC
SCFQSIELLKSRPAHLAVFLHHVVSQFDPATLLCYLYSDLYKHTNSKETRRIFLEFHQFFLDRSAHLKVS
VPDEMSADLEKRRPELIPEDLHRHYIQTMQERVHPEVQRHLEDFRQKRSMGLTAESELTCLDAERDKDR
LTLEKERTCAEQIVAKIEEVLMTAQAVEEDKSSTMQYVILMYMKHLGVKVEPRNLEHKRGRIGFLPKIK
QSMKKDKEGEEKKRRGFPSILGPPRRPSRHDNSAIGRAMELQKARHPKHLSTPSSVSPEPQDSAKLRQS
GLANEGTDAGYLPANSMSSVASGASFSQEGGKENDTGSKQVGETSAPGDTLDGTPRTLNTVDFPPPPPLD
QQVEEECEVERVTEHGTPKPFKFDVAFGESQSEDEQFENDLETDPPNWQQLVSREVLGLKPCIEKRQ
EVINELFYTERAHVRTLVLDQVFYQVRSREGILSPSELRKIFSNLEDILQLHIGLNEQMKAVRKRNETS
VIDQIGEDLLTWFSGPGEELKHAATFCSNQPFALMIKSRQKDSRFQTFVQDAESNPLCRRLQLKDI
IPTQMQRLLTKYPLLLDNI AKYTEWPTEREKVKKAADHCRQILNYVNQAVKEAENKQRLDYQRRLDTSSL
KLSEYPNVEELRNLDLTKRKMIEHGPLVWKNRDKTIDL YTLLELILVLLQKQDDRLVLRCHSKILAST
ADSKHTFSPVIKLVLRQVATDNKALFVISMDSNGAQIYELVAQTVSEKTVWQDLICRMAASVKEQST
KPIPLPQSTPGEQDNDEEDPSKLKEEQHGISVTGLQSPDRDLGLESTLISSKPQSHSLSTSGKSEVRDLF
VAERQFAKEQHTDGLKEVGEDYQIAPDSHLPVSEERWALDALRNLGLLKQLLVQQLGLTEKSVQEDWQ
HFPRYRTASQGPQTDVSIQNSENIKAYHSGEGHMPFRTGTGDIATCYSPTSTESFAPRDSVGLAPQDSQ
ASNILVMDHMIMTPEMPTMEPEGLDDSGEHFFDAREAHSDENPSEGDGAVNKEEKDVNLRISGNYLILD
GYDPVQESSTDEEVASSLTLQPMTGIPAVESTHQQHPQNTSDGAI SPFTEFLVQQRWGAMEYSCFE
IQSPSSCADSQSQIMEYIHKIEADLEHLKVEESYIILCQRLAGSALTDKHSKDS
  
```

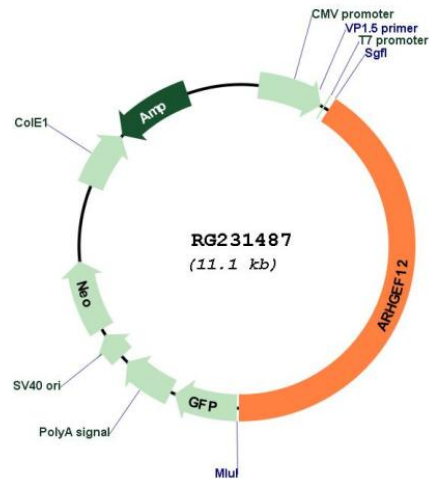
TRTRPLE - GFP Tag - V

Restriction Sites: SgfI-MluI

Cloning Scheme:

Cloning sites used for ORF Shutting:



Plasmid Map:


ACCN: NM_001198665

ORF Size: 4575 bp

OTI Disclaimer: The molecular sequence of this clone aligns with the gene accession number as a point of reference only. However, individual transcript sequences of the same gene can differ through naturally occurring variations (e.g. polymorphisms), each with its own valid existence. This clone is substantially in agreement with the reference, but a complete review of all prevailing variants is recommended prior to use. [More info](#)

OTI Annotation: This clone was engineered to express the complete ORF with an expression tag. Expression varies depending on the nature of the gene.

Components: The ORF clone is ion-exchange column purified and shipped in a 2D barcoded Matrix tube containing 10ug of transfection-ready, dried plasmid DNA (reconstitute with 100 ul of water).

Reconstitution Method:

1. Centrifuge at 5,000xg for 5min.
2. Carefully open the tube and add 100ul of sterile water to dissolve the DNA.
3. Close the tube and incubate for 10 minutes at room temperature.
4. Briefly vortex the tube and then do a quick spin (less than 5000xg) to concentrate the liquid at the bottom.
5. Store the suspended plasmid at -20°C. The DNA is stable for at least one year from date of shipping when stored at -20°C.

RefSeq: [NM_001198665.2](#)

RefSeq Size: 9772 bp

RefSeq ORF: 4578 bp

Locus ID: 23365

UniProt ID: [Q9NZN5](#)

Cytogenetics: 11q23.3

Protein Pathways: Axon guidance, Regulation of actin cytoskeleton, Vascular smooth muscle contraction

Gene Summary: Rho GTPases play a fundamental role in numerous cellular processes that are initiated by extracellular stimuli working through G protein-coupled receptors. The encoded protein may form a complex with G proteins and stimulate Rho-dependent signals. This protein has been observed to form a myeloid/lymphoid fusion partner in acute myeloid leukemia. Three transcript variants encoding different isoforms have been found for this gene. [provided by RefSeq, Jul 2014]