

Product datasheet for **RG231486**

ABCC10 (NM_001198934) Human Tagged ORF Clone

Product data:

Product Type:	Expression Plasmids
Product Name:	ABCC10 (NM_001198934) Human Tagged ORF Clone
Tag:	TurboGFP
Symbol:	ABCC10
Synonyms:	EST182763; MRP7; SIMRP7
Mammalian Cell Selection:	Neomycin
Vector:	pCMV6-AC-GFP (PS100010)
E. coli Selection:	Ampicillin (100 ug/mL)
ORF Nucleotide Sequence:	>RG231486 representing NM_001198934 Red=Cloning site Blue=ORF Green=Tags(s)

TTTTGTAATACGACTCACTATAGGGCGGCCGGAATTCGTCGACTGGATCCGGTACCGAGGAGATCTGCC
GCC**CGATCGCC**

ATGGAACGACTTCTGGCCAGCTGTGCGGCAGCAGCGCAGCGTGGCCGCTCCCGCTGTGGGAGGGGACA
CCACAGGCCACTGCTTACCCAGCTGGTCTCAGCGCCCTGCCCCACGCGCTCCTCGCCGTGCTCAGTGC
CTGTTACTTGGGCACCCGAGGAGTCCAGATTACATCCTACCCTGCAGTCTGGATGGCCCTCCGACTT
GCAGTTCCTTCTGCTTCCGCTTCCCGCTGCTAGACCTTCTCCAGTTGCTTTGCCACCAGGGGCAG
GCCAGGACCCATAGGGCTAGAGGTGTTGGCAGGGTGCCTGGCAGCTGTGGCCTGGATCAGCCACAGCCT
GGCCCTGTGGGTGTTGGCACATTCCTCATGGCCACTCCCGGGTCCCTTGGCCTTGGCCCTGGTAGCC
TTGCTGCCAGCTCCAGCCCTAGTCTGACCGTGTGTGGCATTGCCAGCGAGGCACACTTCTGCCCCAC
TTCTCCAGGGCCATGGCCCGCTATGCTTGCTCATCCTGCAGCTGGCTGCACTCTTGGCCTATGCACT
GGGATGGGCAGCTCCTGGGGACCACGAGAACCCTGGGCTCAGGAGCCCTCCTGCCCGAGGATCAAGAA
CCTGAGGTGGCTGAAGATGGGGAGAGTTGGCTGTCACGCTTTTCCATGCTGGCTGGCACCCCTTGTGG
CCCGTGGGGCTGTGGAGAGCTCCGGCAGCCTCAGGACATTTGCCGCTCCCCACAGACTGCAGCCAAC
CTACCTGGCTCGTGTCTCCAGGCACACTGGCAGGAGGGGGCACGGCTGTGGAGGGCCTTGTATGGGGCC
TTTGGACGGTGTATCTGGCACTTGGACTGCTGAAGCTGGTGGGACCATGTTGGGATTCTCAGGGCCCC
TGTGTCTCCCTACTGGTGGGCTTCTGGAAGAGGGGCAGGAGCCACTAAGCCACGGCCTGCTCTATGC
TCTGGGGCTAGCCGGTGGGGCTGTGCTGGGTGCTGTGCTGCAGAATCAGTATGGGTATGAGGTATATAAG
GTAACACTTCAGGCACGGGGGGCTGTGCTGAACATCCTGTACTGCAAGGCTTTACAGCTGGGGCCAGCC
GCCCTCTACTGGGGAGGCCCTGAACCTACTAGGCACTGACTCTGAACGGCTGCTTAACCTTGTGGGAG
CTTCCATGAAGCCTGGGGCTGCCCTGCAACTGGCCATACCCTCTACCTGCTGTACCAGCAGGTAGGC
GTGGCCTTCGTGGGTGGTCTCATCTTGGCACTGCTGCTGGTACCCGTCAACAAAGTATTGCCACCCGCA
TCATGGCCAGCAACCAGAAATGCTACAGCACAAGGATGCGCGGGTTAAGCTTGTGACAGAGCTGCTGAG
TGGCATTCCGGTCATCAAGTTCTGCGGGTGGGAGCAGGCACTGGGAGCCCGAGTAGAGCCCTGCCGGCT



[View online >](#)

CGAGAGCTGGGGCGACTCCGGGTCATCAAATACCTGGATGCGGCCTGTGTATACCTGTGGGCTGCCCTAC
CGGTTGTCATCTCCATCGTTATCTTTCATCACCTATGTCCTCATGGGGCACCAGCTCACTGCCACCAAGGT
GTTACGGCCCTGGCACTGGTGCGAATGCTCATTCTTCTCTCAACAACCTCCCTTGGGTGATCAATGGT
CTCCTGGAGGCCAAAGTGTCTTGGACCGGATCCAGCTTTTCTCGACCTTCAAACCACAACCCCCAGG
CCTACTACAGCCAGATCCCCCTGCAGAGCCATCTACAGTATTGGAGCTGCATGGAGCCTTGTCTCCTG
GGACCCAGTTGGAACAGCCTGGAGACCTTCATCAGTCATCTCGAAGTAAAAAGGGTATGCTGGTGGGC
ATCGTGGGAAGGTGCGCTGTGGGAAGAGCTCCCTGCTGGCTGCCATCGTGGAGAGCTCCACAGGCTGC
GTGGGCATGTGGCAGTGCGGGGGCTGTCCAAGGGCTTTGGCCTGGCCACCAGGAACCCCTGGATCCAGTT
TGCCACCATCCGAGACAACATCCTCTTTGGGAAGACATTTGATGCACAGCTGTACAAGGAGGTGCTAGAA
GCCTGCGCCCTCAATGATGACCTCAGTATCCTGCCTGCTGGAGACCAGACAGAGGTGGGGGAGAAGGGTG
TCACCCTTAGCGGAGGACAGCGTGCCCGGATTGCCCTTGTCTGTCTACCAGGAAAAGGAGCTCTA
TCTCTCGATGACCTCTGGCCGCTGTGGATGCAGATGTGGCCAACCACCTGCTGCACAGGTGCATCCTG
GGCATGCTGAGCTACACCACACGGCTGCTGACCCACCGCACTGAGTACCTGGAGAGGGCTGACGCGG
TGCTGCTGATGGAGGCCGGCGCCTCATCCGGCTGGACCTCCCTCTGAGATTCTGCCACTGGTACAAGC
TGTCCCCAAAGCCTGGGCTGAGAATGGACAAGAGTCTGACTCAGCCACAGCCAGTCAGTACAGAACCCA
GAGAAAACAAAGGAGGGGCTGGAGGAGGAGCAGAGCACATCTGGTCGCTGCTGCAGGAAGAAAGCAAGA
AGGAGGGCGCCGTGGCCTTGACGTGTACCAAGCTTACTGGAAGGCCGTGGGCCAGGGCTTGGCCTTAGC
CATCCTCTTCTCTGCTTCTCATGCAAGCCACGCGGAACGCTGCTGACTGGTGGCTCTCCCACTGGATC
TCTCAGCTGAAGGCTGAGAATAGCTCCCAGGAGGCGCAACCCCTCCACCAGCCAGCTTCTATGGGGCTCT
TCTCTCCGAGCTGCTCCTCTTTTCCCCTGAAACCTCTACATCCAGTGTTCCTCACTGCCCAAAGCTGC
CCCCAATGGCTCCTCAGACATCCGTTTCTACCTACCCTGTATGCGACCATGCTGGTGTAAATTCCTC
TGCACCTTCTCCGGCAGTGTCTTTGACAGCAGCACCCTTCAAGCAGCTGCCACTCTGCATCCGCCG
TGCTGCATCGAGTCTTATGGCACCAGTACTTCTTCAATGCCACACCCAGGGCCGGATCCTAAACCG
CTTCTCCTCTGATGTGGCCTGTGCGGATGACAGCCTGCCCTTCTCCTCAACATCCTCTGGCCAACGCG
GCAGGCCTGCTGGGGCTCCTGGCCGTGCTGGGCTCTGGCCTGCCCTGGCTGCTGCTCCTGCTGCCGCTT
TGAGCATCATGTACTATCACGTGCAGCGCCACTACAGGGCCTCCTCACGGGAGCTGCGGCGCTGGGCGAG
CCTCACCTGTCTCCACTGTATAGCCATCTGGCCGATACCTTGGCTGGCCTCTCTGTGCTCCGGGCCACA
GGGGCCACCTACAGGTTTGGAGGAGAACTGCGACTCCTTGGCTAAACCAGAGGTGCCAGTTTGCCA
CCAGTGCCACAATGCAGTGGCTGGACATTCGGCTACAGCTCATGGGGCGGCAGTGGTACGCGCTATCGC
AGGCATCGCTCTGGTGCAGCACCAGCAGGGCCTCGCTAACCAGGGCTGGTGGGCTTGTGCTGTCTTAT
GCCCTGTCCCTGACGGGCTGCTCTCGGCCTGGTGGAGCAGCTTACACAGACAGAGGCCATGCTGGTGA
GGTTCGAGCGGCTGGAAGAGTACACCTGTGACCTGCCCCAGGAACCCAGGGCCAGCCACTGCAGCTGGG
CACCGGCTGGCTGACCCAGGGGGCGTGGAGTTCCAGGACGTGGTGTGGCGTACCAGGCCAGGGCTGCCG
AATGCCCTGGATGGAGTGACCTTCTGCGTGCAGCCTGGAGAGAAGTTGGGCATCGTGGGCGCCACAGGCT
CCGGCAAGTCTTCCCTGTGTGGTGTCTTCCGGCTGCTAGAGCCAGTTACAGGGCAGTGTGCTGGA
CGGCGTGGACACCAGCCAGCTGGAGCTGGCCAGCTCAGATCCAGTTGGCTATCATCCCCAGGAGCCC
TTTTTGTTCAGTGGGACTGTTCCGGAAAACCTGGACCCCAAGGGCCTACATAAGGACAGGGCCTTGTGGC
AGGGCCGAAGCAGTGCCACCTGAGTGGGTGATTACATCCATGGGTGGTCTGGATGGTGGAGCTGGTGA
AAGATCCTGTGTATCGATGAGGCCACAGCAAGTGTGGACCAGAAGACAGACCAGCTGCTCAGCAGACCA
TCTGCAAACGCTTTGCCAACAAGACAGTGTGACCATTGCCCATAGGCTCAACACGATCCTGAACTCAGA
CCGGGTGCTGGTGTACAAGCGGGGAGAGTGGTAGAGCTGGACTCCCGGCCACCCTGCGCAACCAGCCC
CACTCCTGTTCCAGCAGCTGCTGCAGAGCAGCCAGCAGGGAGTCCCTGCCTCACTCGGAGGTCCC

ACGCGTACGCGGGCCGCTCGAG - GFP Tag - GTTTAA

Protein Sequence: >RG231486 representing NM_001198934
 Red=Cloning site Green=Tags(s)

```

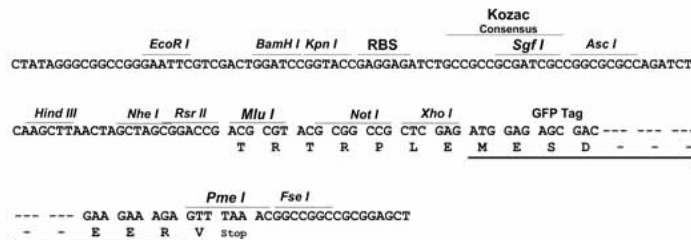
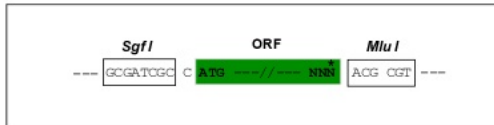
MERLLAQLCGSSAAWPLPLWEGDTTGHCFQLVLSALPHALLAVLSACYLGTSPSPDYILPCSPGWRLRL
AASFLLSVFPLDLLPVALPPGAGPGPIGLEVLAGCVAAVAWISHSLALWVLAHSPHGHRSRGLALALVA
LLPAPALVLTWLWHCQRGTLPLPPLPGPMARLCLLILQLAALLAYALGWAAPGGPREPWAQEPLLPEDQE
PEVAEDGESWLSRF SYAWLAPLLARGACGELRQPQDICRLPHRLQPTYLARVFQAHWQEGARLWRALYGA
FGRCYLALGLLKLVGTMLGFSGPLLLSLLVGFLEEGQEPLSHGLLYALGLAGGAVLGAVLQNYQYGYEVYK
VTLQARGAVLNILYCKALQLGSPRPPTGEALNLLGTDSERLNFGSFHEAWGLPLQLAITLYLLYQQVG
VAFVGGILALLLVPNKVIATRIMASNQEMLQHKDARVCLVTELLSGIRVIKFCGWEQALGARVEACRA
RELGRRLVIKYLDAACVYLWAALPVVISIVIFITYVLMGHQLTATKVFTALALVRMLILPLNFPWVING
LLEAKVSLDRIQLFLDLPNHPQAYYSPDPPAEPSTVLELHGALFSWDPVGTSLETFISHLEVKGMVVG
IVGKVGCGKSSLLAAIAGELHRLRGHVAVRGLSKGFGLATQEPWIQFATIRDNILFGKTFDAQLYKEVLE
ACALNDL SILPAGDQTEVGEKGVTLGGQRARIALARAVYQEKELYLLDDPLAAMDADVANHLLHRCIL
GMLSYTTRLLCTHRTEYLERADAVLLMEAGRLIRAGPPSEILPLVQAVPKAWAENGQESDSATAQSVQNP
EKTKEGLEEEQSTSGRLLQEESKKEGAVALHVVQAYWKAVGQGLALAILFSLLLMQATRNAADWLLSHWI
SQLKAENSQEAQPSTSPASMGFLFSPQLLLFSPGNLYIPVFPLPKAAPNGSSDIRFYLVYATIAGVNSL
CTLLRAVLF AAGTLQAAATLHRRLLHRVLMAPVTFFNATPTGRILNRFSSDVACADDSLPIFNILLANA
AGLLGLLAVLGSGLPWLLLLLPLSIMYHYVQRHYRASSRELRRLLGSLTSLPLYSHLADTLAGLSVLRAT
GATYRFEENLRLELNQRCQFATSATMQWLDIRLQLMGAAVVSAIAGIALVQHQQGLANPGLVGLSLSY
ALSLTGLLSGLVSSFTQTEAMLVSVERLEEYTCDLPEPQGGPLQLGTGWL TGGVEFQDVVLA YRPLP
NALDGVTF CVQPGEKLGIVGRTGSGKSSLLLVFRLLEPSSGRVLLDGVDTSQLLELAQLRSQLAII PQEP
FLFSGTVRENLD PQGLHKDRALWQALKQCHLSEVITSMGGLDGELGEGGRSLSLGQRQLLCLARALLTDA
KILCIDEATASVDQKTDQLLQQTICKRFANKTVL TIAHRLNTILNSDRVLVLQAGRVVELDSPATLRNQP
HSLFQQLLQSSQGV PASLGGP
  
```

TRTRPLE - GFP Tag - V

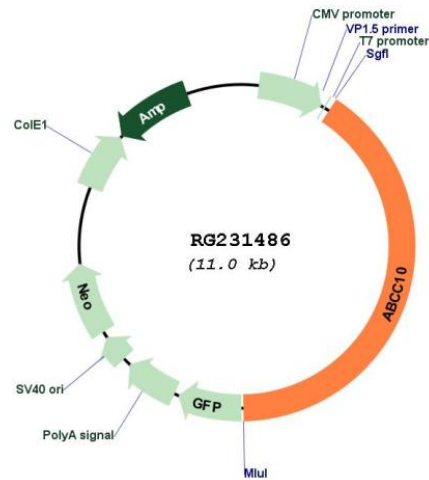
Restriction Sites: SgfI-MluI

Cloning Scheme:

Cloning sites used for ORF Shutting:



Plasmid Map:



ACCN: NM_001198934

ORF Size: 4476 bp

OTI Disclaimer: The molecular sequence of this clone aligns with the gene accession number as a point of reference only. However, individual transcript sequences of the same gene can differ through naturally occurring variations (e.g. polymorphisms), each with its own valid existence. This clone is substantially in agreement with the reference, but a complete review of all prevailing variants is recommended prior to use. [More info](#)

OTI Annotation: This clone was engineered to express the complete ORF with an expression tag. Expression varies depending on the nature of the gene.

Components: The ORF clone is ion-exchange column purified and shipped in a 2D barcoded Matrix tube containing 10ug of transfection-ready, dried plasmid DNA (reconstitute with 100 ul of water).

Reconstitution Method:

1. Centrifuge at 5,000xg for 5min.
2. Carefully open the tube and add 100ul of sterile water to dissolve the DNA.
3. Close the tube and incubate for 10 minutes at room temperature.
4. Briefly vortex the tube and then do a quick spin (less than 5000xg) to concentrate the liquid at the bottom.
5. Store the suspended plasmid at -20°C. The DNA is stable for at least one year from date of shipping when stored at -20°C.

RefSeq: [NM_001198934.2](#)

RefSeq Size: 5058 bp

RefSeq ORF: 4479 bp

Locus ID: 89845

UniProt ID: [Q5T3U5](#)

Cytogenetics: 6p21.1

Protein Families: Druggable Genome, Transmembrane

Protein Pathways: ABC transporters

Gene Summary: The protein encoded by this gene is a member of the superfamily of ATP-binding cassette (ABC) transporters. ABC proteins transport various molecules across extra- and intra-cellular membranes. ABC genes are divided into seven distinct subfamilies (ABC1, MDR/TAP, MRP, ALD, OABP, GCN20, and White). This ABC full-transporter is a member of the MRP subfamily which is involved in multi-drug resistance. Multiple transcript variants encoding different isoforms have been found for this gene.[provided by RefSeq, Nov 2010]