

Product datasheet for **RG231473**

NrCAM (NM_001193582) Human Tagged ORF Clone

Product data:

Product Type:	Expression Plasmids
Product Name:	NrCAM (NM_001193582) Human Tagged ORF Clone
Tag:	TurboGFP
Symbol:	NRCAM
Mammalian Cell Selection:	Neomycin
Vector:	pCMV6-AC-GFP (PS100010)
E. coli Selection:	Ampicillin (100 ug/mL)
ORF Nucleotide Sequence:	>RG231473 representing NM_001193582 Red=Cloning site Blue=ORF Green=Tags(s)

TTTTGTAATACGACTCACTATAGGGCGGCCGGAATTCGTCGACTGGATCCGGTACCGAGGAGATCTGCC
GCC**CGATCGCC**

ATGCAGCTTAAAATAATGCCGAAAAGAAGCGCTTATCTGCGGGCAGAGTGCCCTGATTCTTCTCTGT
GCCAGATGATTAGTGCAGTGAAGTACCTCTTGATCCAAAACCTTCTTGAAGACTTGGTACAGCCTCCAAC
CATCACCCAACAGTCTCCAAAAGATTACATTATTGACCCTCGGGAGAATATTGTAATCCAGTGTGAAGCC
AAAGGAAAACCGCCCCAAGCTTTTCTGGACCGTAATGGGACTCATTTTGACATCGATAAAGACCCTC
TGGTCACCATGAAGCCTGGCACAGGAACGCTCATAATTAACATCATGAGCGAAGGAAAGCTGAGACCTA
TGAAGGAGTCTATCAGTGTACAGCAAGGAACGAACGCGGAGTGCAGTTTCTAATAACATTGTTGTCCGC
CCATCCAGATCACCAATTGTGGACCAAAGAAAACCTTGAACCAATCACACTTCAAAGTGGTCACTTTAG
TACTTCCCTGCAGACCCCAATTGGATTACCACCACCTATAATATTTGGATGGATAATTCTTTCAAAG
ACTTCCACAAAGTGAAGAGTCTCAAGGTTTGAATGGGACCTTTATTTTCCAATGCCTCCCAGAG
GACACCCGCAAGACTATATCTGTTATGCTAGATTTAATCATACTCAAACCATACAGCAGAAGCAACCTA
TTTCTGTGAAGGTGATTTCAAGTGAAGTGAATGACACTATAGCTGCTAATTTGAGTGACACTGAGTT
TTATGGTCTAAATCAAGTAGAGAGAGGCCAACATTTTTAACTCCAGAAGGCAATGCAAGTAACAAA
GAGGAATTAAGAGGAAATGTGCTTTCACCTGGAGTGCATTGCAGAAGGACTGCCTACCCCAATTATTTACT
GGGCAAAGGAAGATGGAATGCTACCCAAAACAGGACAGTTTATAAGAATTTGAGAAAACCTTGCAGAT
CATTATGTTTTCAGAAGCAGACTCTGAAATTACCAATGTATAGCAAAAACGCATTAGGAGCCATCCAC
CATACCATTTCTGTTAGAGTTAAAGCGGCTCCATACTGGATCACAGCCCTCAAATCTTGTGCTGTCCC
CAGGAGAGGATGGGACCTTGATCTGCAGAGCTAATGGCAACCCCAACCCAGAATTAGCTGGTTAACAAA
TGGAGTCCCAATAGAAATGGCCCTGATGACCCAGCAGAAAAATAGATGGCGATACCATTATTTTTTCA
AATGTTCAAGAAAGATCAAGTGCAGTCTATCAGTGAATGCCTCTAATGAATATGGATATTTACTGGCAA
ACGCATTTGTAATGTGCTGGCTGAGCCACCACGAATCCTCACACCTGCAAAACACTCTACCAGTTCAT
TGCAAAACAGGCTGCTTTACTAGACTGTGCCTTTTGGGTCTCCTCTCCCAACCATCGAGTGGTTAAA
GGAGCTAAAGGAAGTGCCTTTCATGAAGATATTTATGTTTTACATGAAAATGGAACCTTTGAAAATTCCTG
TGCCCAAAGGACAGTACAGGAACCTTACGTGTGTTGCAAGGAATAAATTAGGGATGGCGAAGATGA



[View online »](#)

AGTTCACTTAGAAATCAAAGATCCTACATGGATCGTTAAACAGCCGAATATGCAGTTGTGCAAAGAGGG
AGCATGGTGTCCCTTGAATGCAAAGTGAACATGATCACACCTTATCCCTCACTGTCTGTGGCTGAAGG
ACAACAGGGAAGTCCCAGTGTAAAGGTTCACTGTTGACAAGGATCATCTAGTGGTAGCTGATGTCAG
TGACGATGACAGCGGGACCTACACGTGTGTGGCCAACACCACTCTGGACAGCGTCTCCGCCAGCGTGTG
CTTAGCGTTGTTGCTCTACTCCAACCTCCAGCTCCCGTTACGATGTCCAAATCCTCCCTTTGACTTAG
AACTGACAGATCAACTTGACAAAAGTGTTCAGTGTGATGGACCCAGGGCATGACAACAATAGCCCCAT
TACAAAATTCATCATCGAATATGAAGATGCAATGCACAAGCCAGGGCTGTGGCACCACCAACTGAAGTT
TCTGGAACACAGACCACAGCCAGCTGAAGCTGTCTCCTTACGTGAACTACTCCTCCCGCTGATGGCAG
TGAACAGCATTGGGAAGAGCTTGCCACGAGGCGTCTGAGCAGTATTTGACGAAAGCCTCAGAACCAGA
TAAAAACCCACAGCTGTGGAAGGACTGGGATCAGAGCCTGATAATTTGGTGATTACGTGGAAGCCCTTG
AATGGTTTCGAATCTAATGGGCCAGGCCTTCAGTACAAAGTTAGCTGGCGCCAGAAAAGTGGTGATGATG
AATGGACATCTGTGGTTGTGGCAAATGTATCCAAATATATTGTCTCAGGCACGCCAACCTTTGTTCCATA
CCTGATCAAAGTTCAGGCCCTGAATGACATGGGGTTTGCCTCCGAGCCAGCTGTAGTCATGGGACATTCT
GGAGAAGACCTCCAATGGTGGCTCCTGGGAACGTGCGTGTGAATGTGGTGAACAGTACCTTAGCCGAGG
TGCACTGGGACCCAGTACCTCTGAAAAGCATCCGAGGACACCTACAAGGCTATCGGATTTACTATTGGAA
GACCCAGAGTTCACTAAAAGAAAACAGACGTACATTGAGAAAAAGATCCCTCACCTTCCAAGGCAGCAAG
ACTCATGGCATGTTGCCGGGGCTAGAGCCCTTAGCCACTACACACTGAATGTCCGAGTGGTCAATGGGA
AAGGGGAGGGCCAGCCAGCCCTGACAGAGTCTTAACTCCAGAAGGAGTCCCCAGTGTCCCTCGTC
TTTGAAGATTGTGAATCCAACACTGGACTCTCTCACTTTGGAATGGGATCCACCGAGCCACCCGAATGGC
ATTTTGACAGAGTACACCTTAAAGTATCAGCCAATTAACAGCACACATGAATTAGGCCCTCTGGTAGATT
TGAAAATTCCTGCCAACAAAGACACGGTGGACTTTAAAAATTTAAATTCAGCACTCGATATAAGTTTTA
TTTCTATGCACAAACATCAGCAGGATCAGGAAGTCAAATTACAGAGGAAGCAGTAACAACCTGTGGATGAA
GCTGGTATTCTCCACCTGATGTAGGTGCAGGCAAGCGATGGCAAGCCGGCAGGTGGATATTGCAACTC
AGGGCTGGTTCATTGGTCTGATGTGTGCTGTTGCTCTCCTTATCTTAATTTTGTGATTGTTTGCTTCAT
CAGAAGAAAACAGGGTGGTAAATATCCAGTTAAAGAAAAGGAAGATGCCCATGCTGACCCTGAAATCCAG
CCTATGAAGGAAGATGATGGGACATTTGGAGAATACAGTGTGCAGAAGACCACAAGCCTTTGAAAAAAG
GAAGTCGAACTCCTTCAGACAGGACTGTAAAAAAGAAGATAGTGACGACAGCCTAGTTGACTATGGAGA
AGGGGTTAATGGCCAGTTCAATGAGGATGGCTCCTTTATTGGACAATACAGTGGTAAAGAAAGAGAAAGAG
CCGGCTGAAGGAAACGAAAGCTCAGAGGCACCTTCTCTGTCAACGCCATGAATTCCTTTGTT

ACGCGTACGCGGCCGCTCGAG – GFP Tag – GTTTAA

Protein Sequence: >RG231473 representing NM_001193582
 Red=Cloning site Green=Tags(s)

MQLKIMPKKKRLSAGRVPLILFLCQMISALEVPLDPKLLLEDLVQPPTITQQSPKDYIIDPRENIVIQCEA
 KGKPPPSFSWTRNGTHFDIDKDLVMTKPGTGTLIINIMSEGKAETYEYVQCTARNERGAAVSNNIVVR
 PSRSPLWTKLEPITLQSGQSLVLPSCRPPIGLPPPIIFWMDNSFQRLPQSERSVQGLNGDLYFSNVLPE
 DTREDYICYARFNHTQTIQQKQPI SVKVISVDELNDTIAANLSDTEFYGAKSSRRERPTFLTPEGNASNK
 EELRGNVLSLECIAEGLPTPIIYWAKEDGMLPKNRTVYKNFEKTLQIIHVSEADSGNYQCI AKNALGAIH
 HTISVRVKAAPYWITAPQNLVLSPGEDGLICRANGNPKPRISWLTNGVPIEIA PDDPSRKIDGDTIIFS
 NVQERSSAVYQCNASNEYGYLLANAFVNVLAEP RPRLTPANTLYQVIANRPALLDCAFFGSPLPTIEWFK
 GAKGSALHEDIYVLHENGTL EIPVAQKDSTGYTCVARNKLGMAKNEVHLEIKDPTWIVKQPEYAVVQRG
 SMVSFECKVKHDHTLSLTVLWLDKNRELPSDERFTVDKDHLVADVSDDDSGTYTCVANTLDSVSASAV
 LSVVAPTPTPAPVYDVPNPPFDLELTDQLDKSVQLSWTPGDDNNSPITKFIIEYEDAMHKPGLWHHQTVEV
 SGTQTTAQLKLSPVVNSFRVMVANSIGKSLPSEASEQYLTKASEPDKNPTAVEGLGSEPDNLVITWKPL
 NGFESNGPGLQYKVSQRQKDGDEWTSVVVANVSKYIVSGTPTFVPYL IKVQALNDMGFAPEPAVVMGHS
 GEDLPMVAPGNVRVNVNSTLAEVHWDPVPLKSIRGHLQGYRIYYWKTQSSSKRNRRIEKKILTFQGSK
 THGMLPGLPEFPHYTLNVRVVNGKGE GPASPDRVFNTPEGVPSAPSSLKIVNPTLDSLLEWDDPSPHPNG
 ILTEYTLKYQPINSTHELGPLVDLKIPANKTRWTLKLNLFSTRYKFYFYAQT SAGSGSQITEEAVTTVDE
 AGILPPDVGAGKAMASRQVDIATQGWFI GLMCAVALLILLIVCFIRRNKGGKYPVKEKEDAHADPEIQ
 PMKEDDGTGFEYSDAEDHKPLKKGSRTPSDRTVKKEDSDDSLVDYGEVNGQFNEDGSF IGQYSKKKEKE
 PAEGNESSEAPSPVAMNSFV

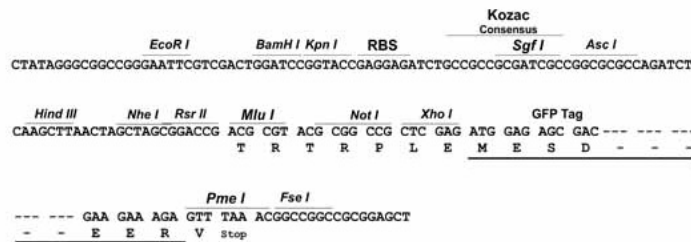
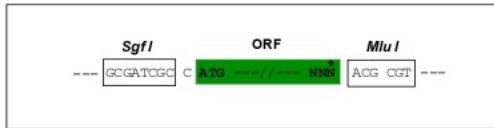
TRTRPLE – GFP Tag – V

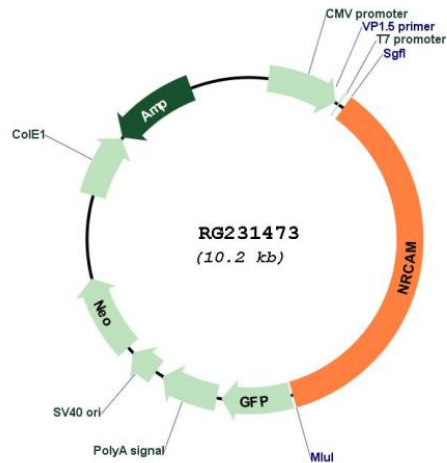
Restriction Sites:

SgfI-MluI

Cloning Scheme:

Cloning sites used for ORF Shutting:



Plasmid Map:


ACCN: NM_001193582

ORF Size: 3633 bp

OTI Disclaimer: The molecular sequence of this clone aligns with the gene accession number as a point of reference only. However, individual transcript sequences of the same gene can differ through naturally occurring variations (e.g. polymorphisms), each with its own valid existence. This clone is substantially in agreement with the reference, but a complete review of all prevailing variants is recommended prior to use. [More info](#)

OTI Annotation: This clone was engineered to express the complete ORF with an expression tag. Expression varies depending on the nature of the gene.

Components: The ORF clone is ion-exchange column purified and shipped in a 2D barcoded Matrix tube containing 10ug of transfection-ready, dried plasmid DNA (reconstitute with 100 ul of water).

Reconstitution Method:

1. Centrifuge at 5,000xg for 5min.
2. Carefully open the tube and add 100ul of sterile water to dissolve the DNA.
3. Close the tube and incubate for 10 minutes at room temperature.
4. Briefly vortex the tube and then do a quick spin (less than 5000xg) to concentrate the liquid at the bottom.
5. Store the suspended plasmid at -20°C. The DNA is stable for at least one year from date of shipping when stored at -20°C.

RefSeq: [NM_001193582.1](#), [NP_001180511.1](#)

RefSeq Size: 6406 bp

RefSeq ORF: 3636 bp

Locus ID: 4897

UniProt ID: [Q92823](#)

Cytogenetics: 7q31.1

Protein Families: Druggable Genome, Transmembrane

Protein Pathways: Cell adhesion molecules (CAMs)

Gene Summary: Cell adhesion molecules (CAMs) are members of the immunoglobulin superfamily. This gene encodes a neuronal cell adhesion molecule with multiple immunoglobulin-like C2-type domains and fibronectin type-III domains. This ankyrin-binding protein is involved in neuron-neuron adhesion and promotes directional signaling during axonal cone growth. This gene is also expressed in non-neural tissues and may play a general role in cell-cell communication via signaling from its intracellular domain to the actin cytoskeleton during directional cell migration. Allelic variants of this gene have been associated with autism and addiction vulnerability. Alternative splicing results in multiple transcript variants encoding different isoforms. [provided by RefSeq, Jul 2008]