

## Product datasheet for **RG231442**

### PSMD1 (NM\_001191037) Human Tagged ORF Clone

#### Product data:

Product Type:	Expression Plasmids
Product Name:	PSMD1 (NM_001191037) Human Tagged ORF Clone
Tag:	TurboGFP
Symbol:	PSMD1
Synonyms:	P112; Rpn2; S1
Mammalian Cell Selection:	Neomycin
Vector:	pCMV6-AC-GFP (PS100010)
E. coli Selection:	Ampicillin (100 ug/mL)



[View online »](#)

**ORF Nucleotide Sequence:**

>RG231442 representing NM\_001191037  
 Red=Cloning site Blue=ORF Green=Tags(s)

TTTTGTAATACGACTCACTATAGGGCGGCCGGAATTCGTCGACTGGATCCGGTACCGAGGAGATCTGCC  
 GCC**CGGATCGCC**

ATGATCACCTCGGCCGCTGGAATTATTTCTCTTCTGGATGAAGATGAACACAGCTTAAGGAATTTGCAC  
 TACACAAATTGAATGCAGTTGTTAATGACTTCTGGGCAGAAATTTCCGAGTCCGTAGACAAATAGAGGT  
 TTTATACGAAGATGAAGTTTCCGGAGTCGGCAGTTTGCAGCCTTAGTGGCATCTAAAGTATTTTATCAC  
 CTGGGGCTTTTGGAGGCTCTGAATTATGCTCTTGGAGCAGGGGACCTTCAATGTCAATGATAACT  
 CTGAATATGTGGAACTATTATAGCAAAATGCATTGATCACTACACAAACAATGTGTGGAAATGCAGA  
 TTTGCCTGAAGGAGAAAAAAACCAATTGACCAGAGATTGGAAGGCATCGTAAATAAAATGTTCCAGCGA  
 TGTCTAGATGATCACAAGTATAACAGGCTATTGGCATTGCTCTGGAGACACGAAGACTGGACGCTTTG  
 AAAAGACCATACTGGAGTCGAATGATGTCCAGGAATGTTAGCTTATAGCCTTAAGCTCTGCATGTCTTT  
 AATGCAGAATAAACAGTTTCGGAATAAAGTACTAAGAGTTCTAGTTAAAACTACATGAACCTGGAGAAA  
 CCTGATTTTCATCAATGTTTGTGTCAGTGCTTAATTTTCTTAGATGATCCTCAGGCTGTGAGTGATATCTTAG  
 AGAAACTGGTAAAGGAAGACAACCTCCTGATGGCATATCAGATTTGTTTTGATTTGTATGAAAGTGTAG  
 CCAGCAGTTTTTGTATCTGTAATCCAGAATCTTCGAACTGTTGGCACCCCTATTGCTTCTGTGCCTGGA  
 TCCACTAATACGGTACTGTTCCGGGATCAGAGAAAGACAGTGACTCGATGGAACAGAAAGAAAAGACAA  
 GCAGTGCAATTTGTAGGAAAGACACCAGAAGCCAGTCCAGAGCCTAAGGACCAGACTTTGAAAATGATTAA  
 AATTTTAAAGTGGTAAATGGCTATTGAGTTACATCTGCAGTTCTTAATACGAAACAATAACAGACCTC  
 ATGATTTAAAAACACAAAGGATGCAGTACGGAATTTCTGATGCATACTGCAACCGTTATAGCAAAT  
 CTTTTATGCACCTGTGGGACAACCAGTACCAGTTTCTTAGAGATAATTTGGAATGGTATGCCAGAGCCAC  
 TAACTGGCAAAAATTTACTGCTACAGCCAGTTTGGGTGTAATTCATAAGGGTCATGAAAAAGAACGATTA  
 CAGTTAATGGCAACATACCTTCCCAAGGATACTTCTCCAGGATCAGCCTATCAGGAAGGTGGAGGTCTCT  
 ATGCACTAGGTCTTATTCATGCCAATCATGGTGGTGATATAATTGACTATCTGCTTAATCAGCTTAAGAA  
 CGCCAGCAATGATATCGTTAGACACGGTGGCAGTCTGGGCCTTGGTTTGGCAGCCATGGAACTGCACGT  
 CAAGATGTTTATGATTTGCTAAAAACAAACCTTTATCAGGATGATGCAGTAACAGGGGAAGCAGCTGGCC  
 TGGCCCTAGGTTTGGTTATGTTGGGCTCTAAAAATGCTCAGGCTATTGAGGACATGGTTGGTTATGCACA  
 AGAACTCAACATGAGAAGATTCTGCGTGGTCTTGCAGTTGGCATAGCTTTAGTAATGTATGGGAGGATG  
 GAAGAGGCTGATGCTCTCATTGAATCTCTGTGCTGACAAGGCCAATTTCTCGAAGGTCTGGAATGT  
 ATACTGTAGCCATGGCTTATTGTGGCTCTGGTAACAACAAGCAATTCGACGCCTGCTACATGTTGCTGT  
 AAGTGATGTTAATGATGATGTCAGGAGGGCAGCAGTAGAATCACTTGGGTTCACTTATTGAGAACCCT  
 GAACAGTGCCCAAGTGTGTCTTTGTTGTGTCAGAGAGTTACAACCCTCATGTGCCTACGGAGCTGCAA  
 TGGCCTTGGGGATATGCTGTGCTGGTACAGGAAACAAGGAAGCCATTAATTTGCTAGAACCAATGACAAA  
 CGACCCGTGAACACTCGTGAGGCAAGGGGCACTCATAGCTTCAGCTCTCATGATCCAGCAGACTGAA  
 ATCACTTGTCAAAGGTGAATCAGTTCAGACAGCTGTATTCAAAGTCATCAATGATAAGCATGATGATG  
 TCATGGCCAAGTTTGGCGCTATTCTGGCCAGGGCATACTGGATGCAGGTGGTCATAATGTCACAATCTC  
 CTTGCAGTCCAGGACTGGGCATACTCATATGCCTTCTGTGGTTGGCGTCCTTGATTTACCCAGTTTGG  
 TTCTGGTTTCTCTTTCACACTTCTGTGCTTGGCTTATACCCCTACCTGTGTCATTGGCCTTAACAAGG  
 ACTTAAAGGTTTCTACTGCTGATTATCTATAACTGCCAAGGCTAAAAAGAAGGAAAAAGAAAAAGAAAA  
 AAAGGAGGAGGAGAAAATGGAAGTGGATGAGGCAGAGAAAAAGGAGGAAAAAGAGAAGAAAAAGAACCT  
 GAGCCAACTTCCAGTTATTGGATAACCCAGCCCGAGTTATGCCTGCCAGCTTAAGGTCCTAACCATGC  
 CGGAGACCTGTAGATACCAGCCTTTCAAACCACTCTCTATTGGAGGCATCATCTTCTGAAGGATACCAG  
 TGAAGACATTGAGGAGCTGGTGAACCTGTGGCAGCACATGGCCAAAAATCGAGGAGGAGGAACAAGAG  
 CCAGAACCCCAAGAACCTTTGAGTATATTGATGAT

**ACGCGT**ACGCGGCCGCTCGAG - GFP Tag - GTTTAA

Protein Sequence: >RG231442 representing NM\_001191037  
 Red=Cloning site Green=Tags(s)

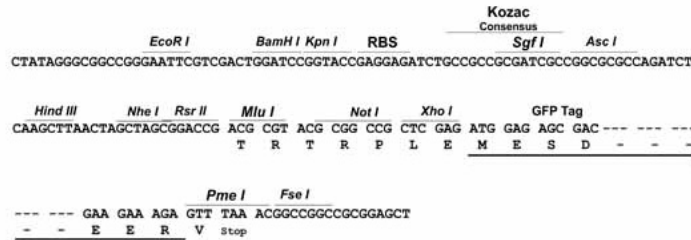
MITSAAGIISLLDEDEPQLKEFALHKLNAVNDFAEISESVDKIEVL YEDEGFRSRQFAALVASKV FYH  
 LGAFEEESLNYALGAGDLFNVNDNSEYVETIIAKCIDHYTKQCVENADLPEGEKPIDQRLEGIVNKMFOR  
 CLDDHKYKQAIGIALETRRLDVFEKTILESNDVPGMLAYSLKLCMSLMQNKQFRNKVLRVLVKIYMNLEK  
 PDFINVCQCLIFLDDPQAVSDILEKLVKEDNLLMAYQICFDLYESASQQFLSSVIQNLRTVGTPIASVPG  
 STNTGTVPGEKSDSMETEETSSAFVGKTPEASPEPKDQTLKMIKILSGEMAIELHLQFLIRNNNTDL  
 MILKNTKDAVRNSVCHTATVIANSFMHC GTTSDQFLRDNLEWLARATNWAKFTATASLGV IHHGHEKEAL  
 QLMATYLPKDTSPGSAYQEGGGLYALGLIHANHGDIIDYLLNQLKNASNDIVRHGGSLGLGLAAMGTAR  
 QDVYDLLKTNLYQDDAVTGEAAGLALGLVMLGSKNAQAIEDMVGYAQETQHEKILRGLAVGIALVMYGRM  
 EEADALIESLCRDKDPILRRSGMYTVAMAYCGSGNKAIRRLHVAVSDVNDVRRAAVESLGFILFRTP  
 EQCPSVSVLLSESYNPHVRYGAAMALGICCAGTGNKEA INLLEPMTNDPVNYVRQGALIASALIMIQQTE  
 ITCPKVNQFRQLYSKVINDKHDDVMKFGAILAQGILDAGGHVNTISLQSRGTGHTHMP SVVGVLVFTQFW  
 FWFPLSHFLSLAYTPTCVIGLNKDLKVSTAVLSITAKAKKKEKEKEKEEKEKMEVDEAEKKEEKKKEP  
 EPNFQLLDNPARVMPAQLKVL TMPETCRYQPFKPLSIGGIIILKDTSEDI EELVEPVAAHGPKIEEEEQE  
 PEPPEPFEYIDD

TRTRPLE - GFP Tag - V

Restriction Sites: SgfI-MluI

Cloning Scheme:

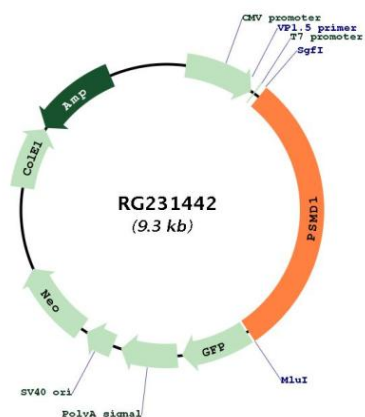
Cloning sites used for ORF Shutting:



ACCN: NM\_001191037

<b>ORF Size:</b>	2766 bp
<b>OTI Disclaimer:</b>	The molecular sequence of this clone aligns with the gene accession number as a point of reference only. However, individual transcript sequences of the same gene can differ through naturally occurring variations (e.g. polymorphisms), each with its own valid existence. This clone is substantially in agreement with the reference, but a complete review of all prevailing variants is recommended prior to use. <a href="#">More info</a>
<b>OTI Annotation:</b>	This clone was engineered to express the complete ORF with an expression tag. Expression varies depending on the nature of the gene.
<b>Components:</b>	The ORF clone is ion-exchange column purified and shipped in a 2D barcoded Matrix tube containing 10ug of transfection-ready, dried plasmid DNA (reconstitute with 100 ul of water).
<b>Reconstitution Method:</b>	<ol style="list-style-type: none"><li>1. Centrifuge at 5,000xg for 5min.</li><li>2. Carefully open the tube and add 100ul of sterile water to dissolve the DNA.</li><li>3. Close the tube and incubate for 10 minutes at room temperature.</li><li>4. Briefly vortex the tube and then do a quick spin (less than 5000xg) to concentrate the liquid at the bottom.</li><li>5. Store the suspended plasmid at -20°C. The DNA is stable for at least one year from date of shipping when stored at -20°C.</li></ol>
<b>RefSeq:</b>	<a href="#">NM_001191037.1</a> , <a href="#">NP_001177966.1</a>
<b>RefSeq Size:</b>	3236 bp
<b>RefSeq ORF:</b>	2769 bp
<b>Locus ID:</b>	5707
<b>UniProt ID:</b>	<a href="#">Q99460</a>
<b>Cytogenetics:</b>	2q37.1
<b>Protein Pathways:</b>	Proteasome
<b>Gene Summary:</b>	<p>The 26S proteasome is a multicatalytic proteinase complex with a highly ordered structure composed of 2 complexes, a 20S core and a 19S regulator. The 20S core is composed of 4 rings of 28 non-identical subunits; 2 rings are composed of 7 alpha subunits and 2 rings are composed of 7 beta subunits. The 19S regulator is composed of a base, which contains 6 ATPase subunits and 2 non-ATPase subunits, and a lid, which contains up to 10 non-ATPase subunits. Proteasomes are distributed throughout eukaryotic cells at a high concentration and cleave peptides in an ATP/ubiquitin-dependent process in a non-lysosomal pathway. An essential function of a modified proteasome, the immunoproteasome, is the processing of class I MHC peptides. This gene encodes the largest non-ATPase subunit of the 19S regulator lid, which is responsible for substrate recognition and binding. There is evidence that this proteasome and its subunits interact with viral proteins, including those of coronaviruses. Alternatively spliced transcript variants have been found for this gene.[provided by RefSeq, Aug 2020]</p>

Product images:



Circular map for RG231442